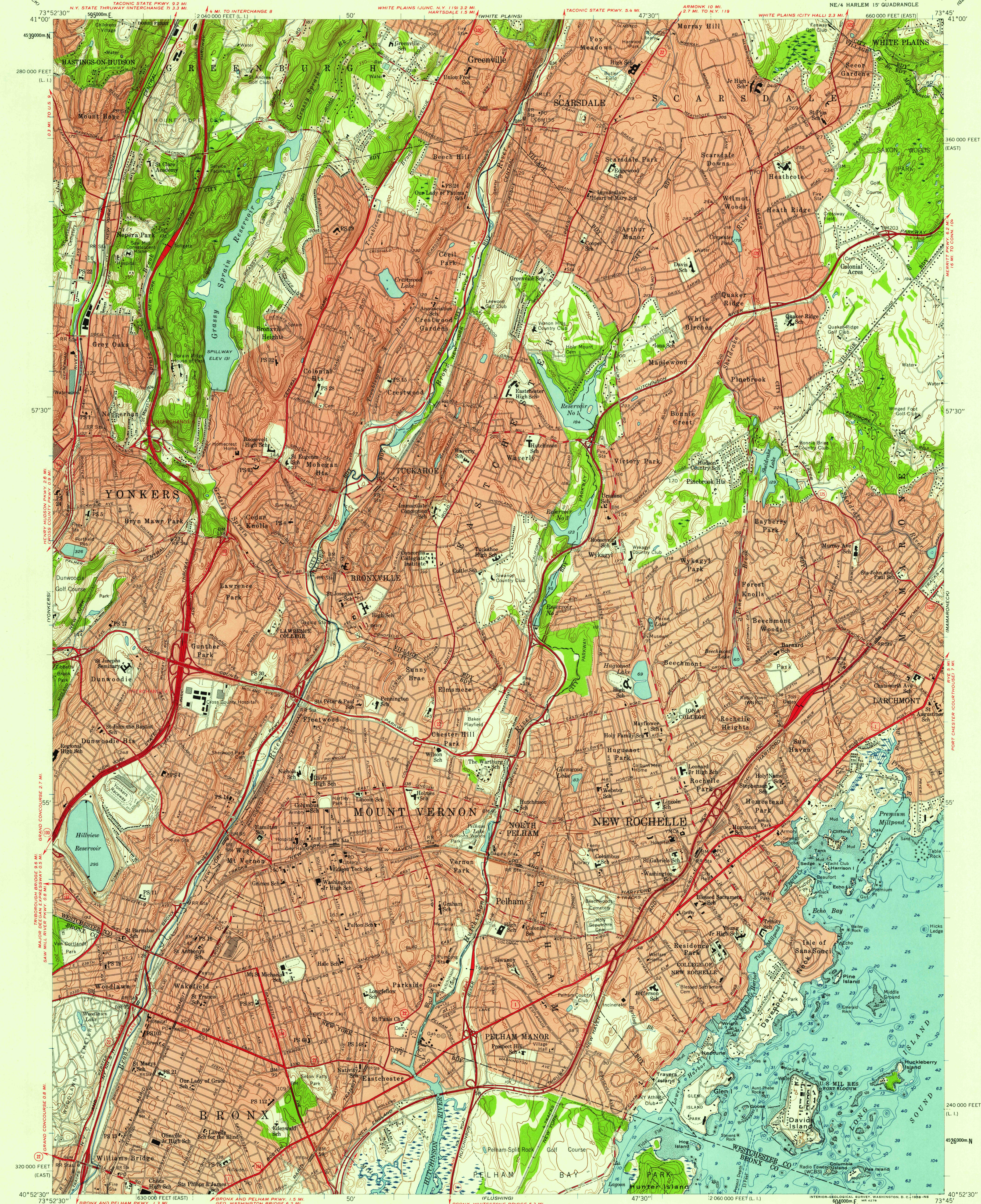


UNITED STATES  
DEPARTMENT OF THE INTERIOR  
GEOLOGICAL SURVEY

MOUNT VERNON QUADRANGLE  
NEW YORK  
7.5 MINUTE SERIES (TOPOGRAPHIC)  
NE/4 HARLEM 15' QUADRANGLE



Mapped, edited, and published by the Geological Survey

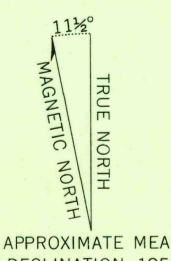
Control by USGS, USC&GS, USCE, and City of New York Board of Estimate and Apportionment

Culture and drainage in part compiled from aerial photographs taken 1953-1954. Topography by photogrammetric methods and by planetable surveys. Field check 1956

Hydrography compiled from USC&GS charts 222 (1955) and 223 (1954)

Polyconic projection. 1927 North American datum 10 000-foot grids based on New York coordinate system, east zone and Long Island zone 1000-meter Universal Transverse Mercator grid ticks, zone 18, shown in blue

Red tint indicates areas in which only landmark buildings are shown



SCALE 1:24,000

1 000 0 1000 2000 3000 4000 5000 6000 7000 FEET

1 5 10 15 20 25 30 35 40 45 50 55 60 65 70 75 80 85 90 95 100 METERS

CONTOUR INTERVAL 10 FEET  
DATUM IS MEAN SEA LEVEL

DEPTH CURVES AND SOUNDINGS IN FEET—DATUM IS MEAN LOW WATER  
SHORELINE SHOWN REPRESENTS THE APPROXIMATE LINE OF MEAN HIGH WATER  
THE MEAN RANGE OF TIDE IS APPROXIMATELY 1.3 FEET

THIS MAP COMPLIES WITH NATIONAL MAP ACCURACY STANDARDS  
FOR SALE BY U. S. GEOLOGICAL SURVEY, WASHINGTON 25, D. C.  
A FOLDER DESCRIBING TOPOGRAPHIC MAPS AND SYMBOLS IS AVAILABLE ON REQUEST

ROAD CLASSIFICATION

Heavy-duty ——— Light-duty ———  
Medium-duty ——— Unimproved dirt ———

U.S. Route ——— State Route ———



USGS  
Historical File  
Topographic Division

MOUNT VERNON, N. Y.  
NE/4 HARLEM 15' QUADRANGLE  
N4052.5-W7345.7.5

1956

U.S.G.S.  
TOPOGRAPHIC DIVISION  
FILE COPY

NOV 18 1956

4850