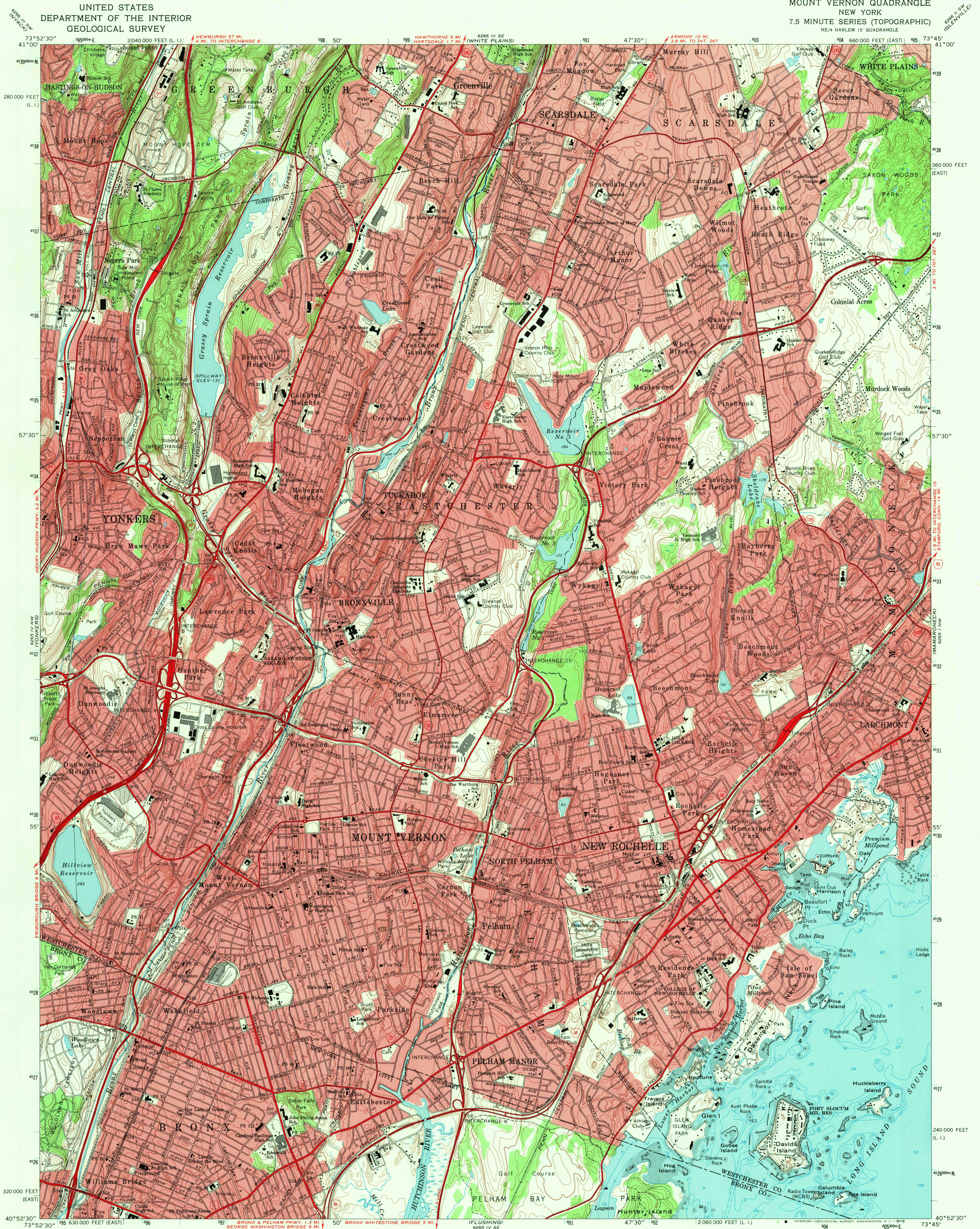


UNITED STATES
DEPARTMENT OF THE INTERIOR
GEOLOGICAL SURVEY

MOUNT VERNON QUADRANGLE
NEW YORK
7.5 MINUTE SERIES (TOPOGRAPHIC)
NE 1/4 HARLEM 15' QUADRANGLE

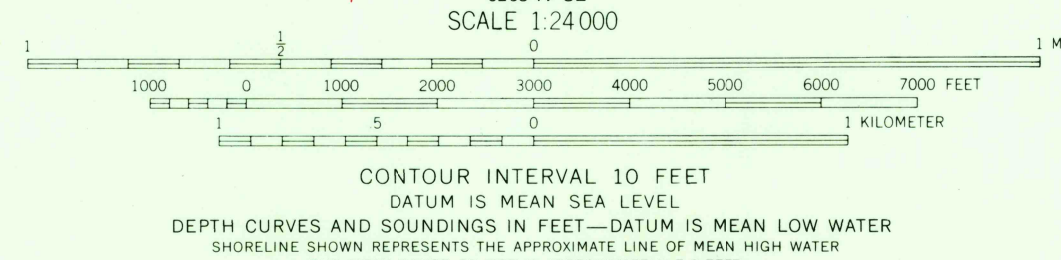
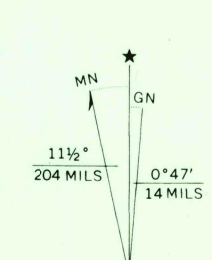


Maped, edited, and published by the Geological Survey
Revised in cooperation with New York Department of
Transportation

Control by USGS, USC&GS, and USCE
Topography by photogrammetric methods from aerial photographs
taken 1953-1954 and planetable surveys 1956. Revised from
aerial photographs taken 1966. Field checked 1966

Selected hydrographic data compiled from USC&GS Charts 222 (1963)
and 223 (1965). This information is not intended for navigational purposes
Polyconic projection. 1927 North American datum
10,000-foot grids based on New York coordinate system, east
and Long Island zones
1000-meter Universal Transverse Mercator grid ticks, zone 18, shown in blue

Red tint indicates areas in which only landmark buildings are shown



USGS
Historical File
Topographic Division

U.S.G.S.
FILE COPY
TOPOGRAPHIC DIVISION

ROAD CLASSIFICATION
Heavy-duty ——— Light-duty ———
Unimproved dirt ———
Interstate Route ——— U.S. Route ——— State Route ———

MOUNT VERNON, N. Y.
NE 1/4 HARLEM 15' QUADRANGLE
N4052.5—W7345/7.5

1966

AMS 6265 IV NE—SERIES V821