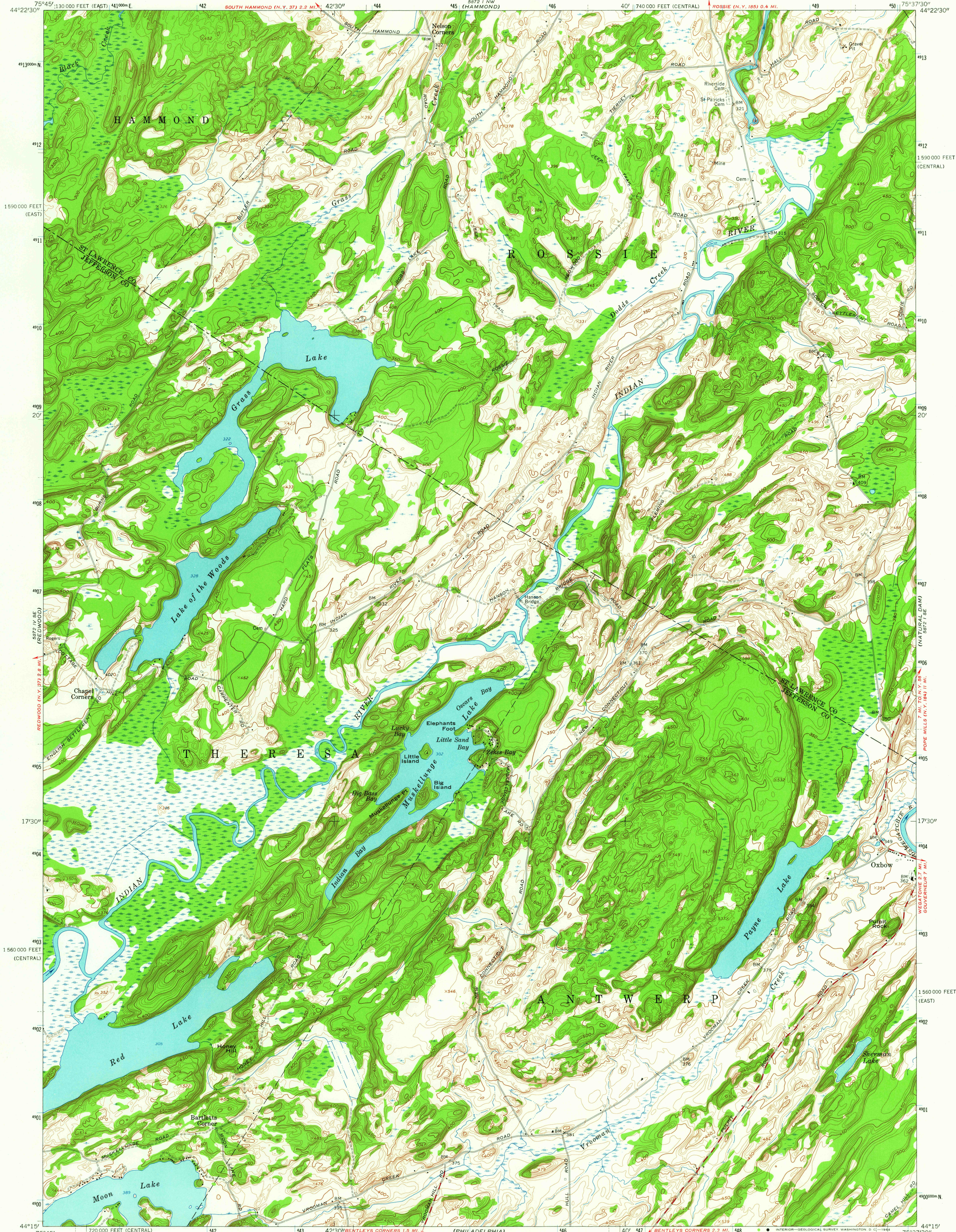
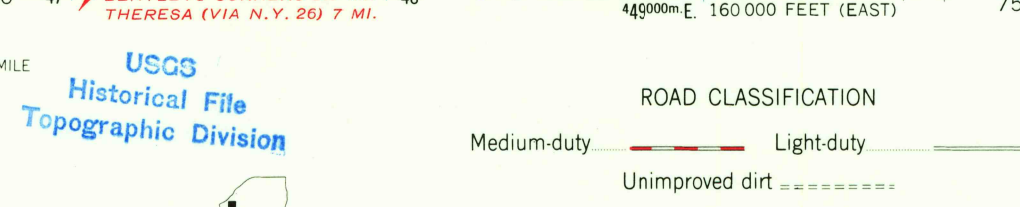
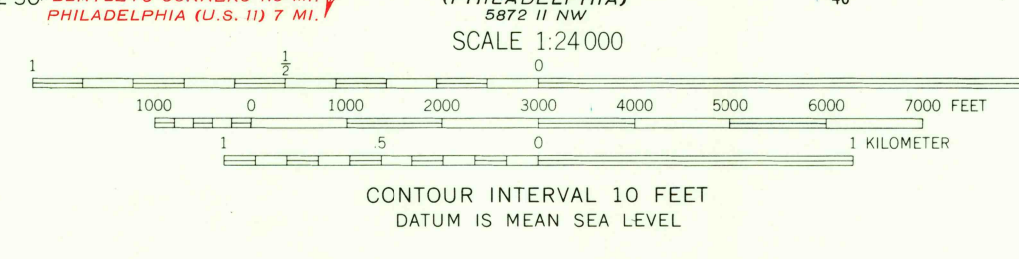
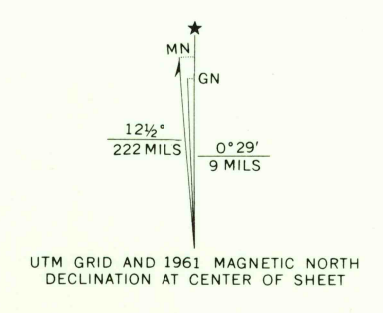


UNITED STATES  
DEPARTMENT OF THE INTERIOR  
GEOLOGICAL SURVEY

MUSKELLUNGE LAKE QUADRANGLE  
NEW YORK  
7.5 MINUTE SERIES (TOPOGRAPHIC)  
SW/4 HAMMOND 15' QUADRANGLE



Mapped by the Army Map Service  
Edited and published by the Geological Survey  
Control by USGS, USC&GS, and USCE  
Topography by photogrammetric methods from aerial  
photographs taken 1947. Field checked 1949  
Revised by the Geological Survey 1961  
Polyconic projection. 1927 North American datum  
10,000-foot grids based on New York coordinate system,  
central and east zones  
1000-meter Universal Transverse Mercator grid ticks,  
zone 18, shown in blue



MUSKELLUNGE LAKE, N. Y.  
SW/4 HAMMOND 15' QUADRANGLE  
N4415-W7537.5/7.5

THIS MAP COMPLIES WITH NATIONAL MAP ACCURACY STANDARDS  
FOR SALE BY U. S. GEOLOGICAL SURVEY, WASHINGTON 25, D. C.  
A FOLDER DESCRIBING TOPOGRAPHIC MAPS AND SYMBOLS IS AVAILABLE ON REQUEST

U.S.G.S.  
FILE COPY  
TOPOGRAPHIC DIVISION

1961  
AMS 5872 I SW-SERIES V821

DUPLICATE

JUL 7 1964

3175