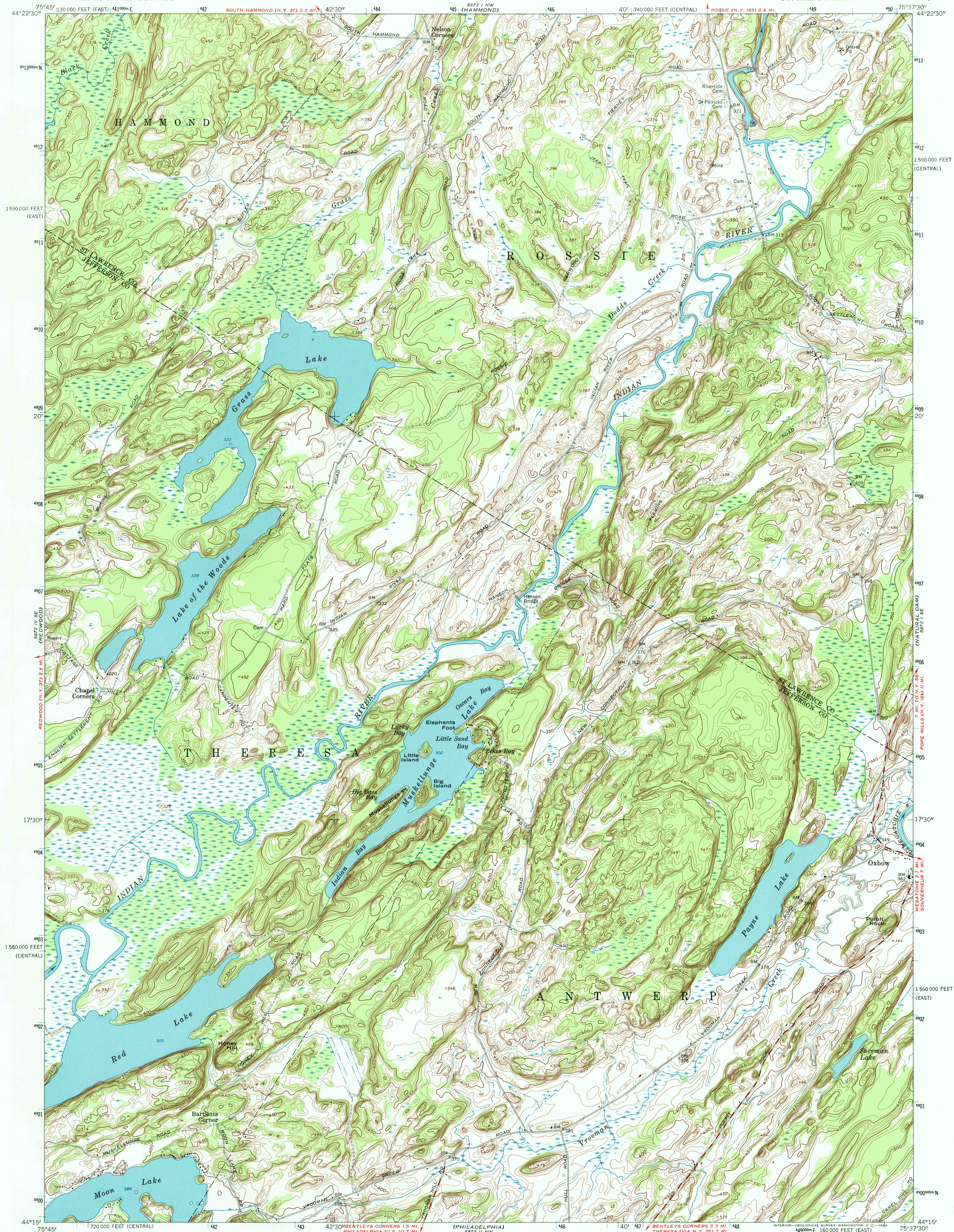


UNITED STATES
DEPARTMENT OF THE INTERIOR
GEOLOGICAL SURVEY

MUSKELLUNGE LAKE QUADRANGLE
NEW YORK
7.5 MINUTE SERIES (TOPOGRAPHIC)
SW/4 HAMMOND 15' QUADRANGLE



Maped by the Army Map Service
Edited and published by the Geological Survey
Control by USGS, USC&GS, and USCE
Topography by photogrammetric methods from aerial
photographs taken 1947. Field checked 1949
Revised by the Geological Survey 1961
Polyconic projection. 1927 North American datum
10,000-foot grids based on New York coordinate system,
central and east zones
1000-meter Universal Transverse Mercator grid ticks,
zone 18, shown in blue

UTM GRID AND 1961 MAGNETIC NORTH
DECLINATION AT CENTER OF SHEET

SCALE 1:24,000
1 0 1000 2000 3000 4000 5000 6000 7000 FEET
1 0 5 10 KILOMETER
CONTOUR INTERVAL 10 FEET
DATUM IS MEAN SEA LEVEL



ROAD CLASSIFICATION
Medium-duty ——— Light-duty ———
Unimproved dirt =====

MUSKELLUNGE LAKE, N.Y.
SW/4 HAMMOND 15' QUADRANGLE
N4415—W7537.5/7.5

1961
AMS 5872 I SW—SERIES V821

THIS MAP COMPLIES WITH NATIONAL MAP ACCURACY STANDARDS
FOR SALE BY U. S. GEOLOGICAL SURVEY, WASHINGTON 25, D. C.
A FOLDER DESCRIBING TOPOGRAPHIC MAPS AND SYMBOLS IS AVAILABLE ON REQUEST

