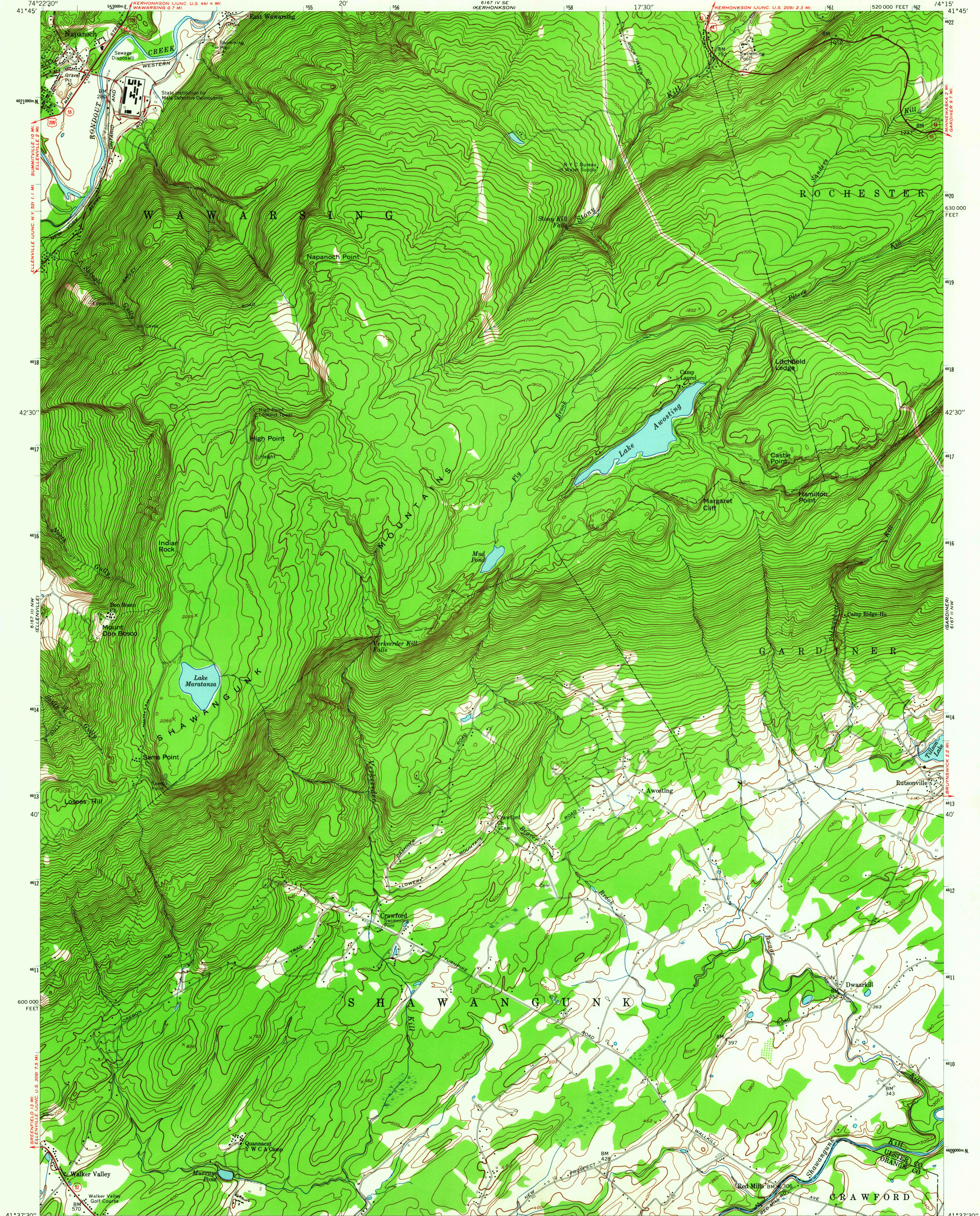
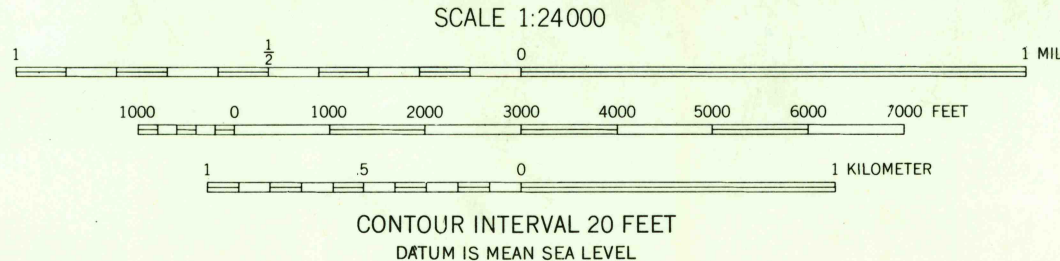
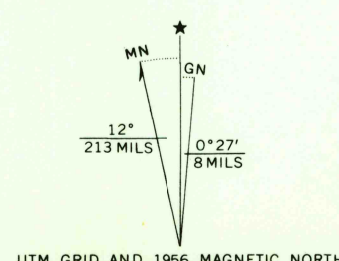


UNITED STATES
DEPARTMENT OF THE INTERIOR
GEOLOGICAL SURVEY

NAPANOCH QUADRANGLE
NEW YORK
7.5 MINUTE SERIES (TOPOGRAPHIC)
NE 1/4 ELLENVILLE 15' QUADRANGLE



Mapped by the Army Map Service
Edited and published by the Geological Survey
Control by USGS and USC&GS
Topography from aerial photographs by photogrammetric
methods. Aerial photographs taken 1942
Culture revised by the Geological Survey 1956
Polyconic projection. 1927 North American datum
10,000 foot grid based on New York coordinate system,
east zone
1000-meter Universal Transverse Mercator grid ticks,
zone 18, shown in blue
Unchecked elevations are shown in brown



USGS
Historical File
Topographic Division



ROAD CLASSIFICATION
Heavy-duty ——— Light-duty ———
Medium-duty ——— Unimproved dirt ———
U. S. Route ——— State Route ———
NAPANOCH, N. Y.
NE 1/4 ELLENVILLE 15' QUADRANGLE
N4137.5-W7415.7/5
1956
AMS 6167 III NE-SERIES V821

U.S.G.S.
FILE COPY
TOPOGRAPHIC DIVISION
3180
FEB 23 1966

THIS MAP COMPLIES WITH NATIONAL MAP ACCURACY STANDARDS
FOR SALE BY U. S. GEOLOGICAL SURVEY, WASHINGTON, D. C. 20242
A FOLDER DESCRIBING TOPOGRAPHIC MAPS AND SYMBOLS IS AVAILABLE ON REQUEST