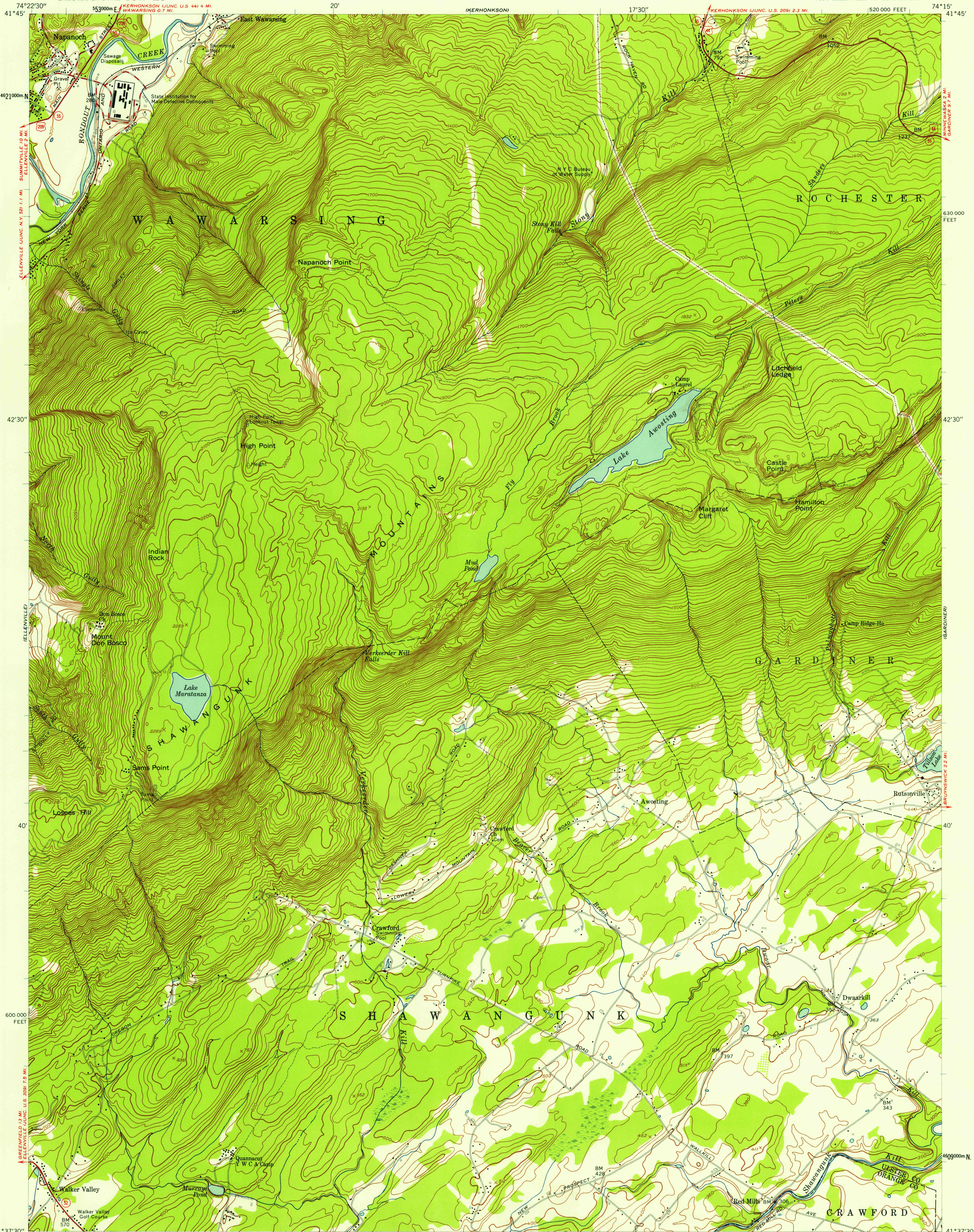


UNITED STATES
DEPARTMENT OF THE INTERIOR
GEOLOGICAL SURVEY

NAPANOCH QUADRANGLE
NEW YORK
7.5 MINUTE SERIES (TOPOGRAPHIC)
NE/4 ELLENVILLE 15' QUADRANGLE



Map by the Army Map Service
Edited and published by the Geological Survey
Control by USGS and USC&GS
Topography from aerial photographs by photogrammetric methods. Aerial photographs taken 1942
Culture revised by the Geological Survey 1956
Polyconic projection. 1927 North American datum
10,000 foot grid based on New York coordinate system,
east zone
1000-meter Universal Transverse Mercator grid ticks,
zone 18, shown in blue
Unchecked elevations are shown in brown

12°
TRUE NORTH
APPROXIMATE MEAN
DECLINATION, 1956

SCALE 1:24,000
1 0 1000 2000 3000 4000 5000 6000 7000 FEET
1 5 0 5 10 KILOMETER
CONTOUR INTERVAL 20 FEET
DATUM IS MEAN SEA LEVEL

USGS
Historical File
Topographic Division



ROAD CLASSIFICATION
Heavy-duty ——— Light-duty ———
Medium-duty ——— Unimproved dirt ———
U. S. Route ——— State Route ———

NAPANOCH, N. Y.
NE/4 ELLENVILLE 15' QUADRANGLE
N4137.5-W7415.7.5

1956

JAN 24 1958

U.S.G.S.
FILE COPY
TOPOGRAPHIC DIVISION

2905