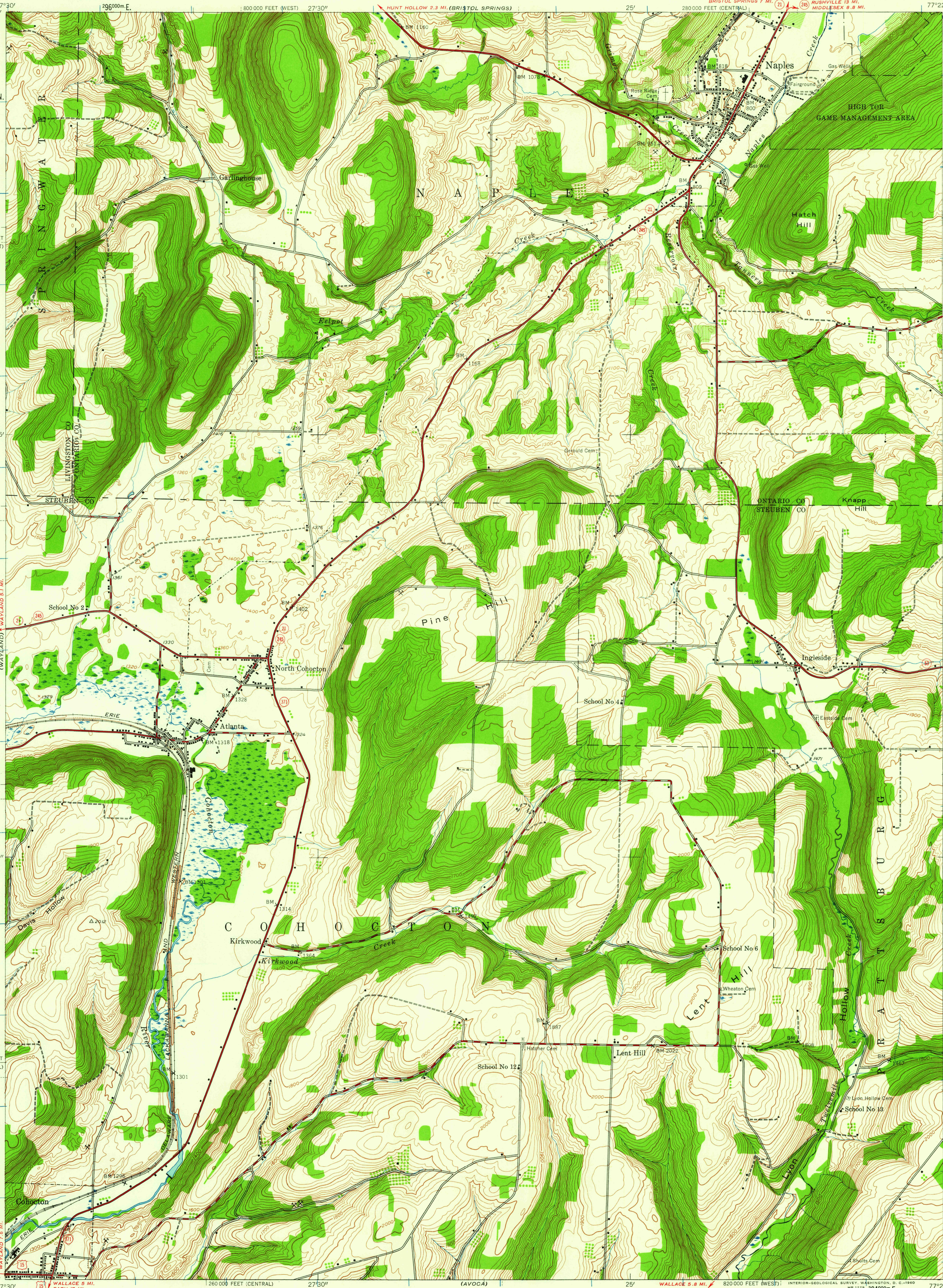


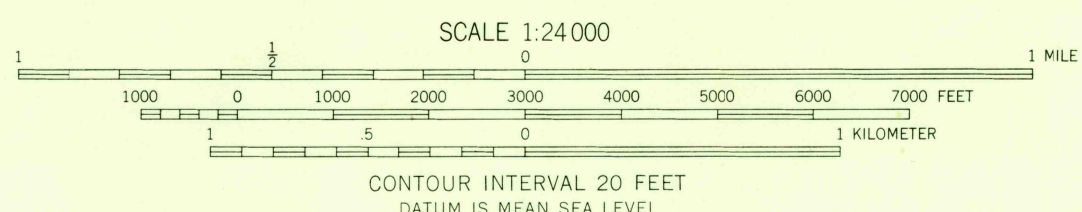
UNITED STATES
DEPARTMENT OF THE INTERIOR
GEOLOGICAL SURVEY

UNITED STATES
DEPARTMENT OF THE ARMY
CORPS OF ENGINEERS

NAPLES QUADRANGLE
NEW YORK
7.5 MINUTE SERIES (TOPOGRAPHIC)



Map by the Army Map Service
Published for civil use by the Geological Survey
Control by USC&GS and TVA
Topography from aerial photographs by photogrammetric methods
Aerial photographs taken 1942. Field check 1942
Polyconic projection. 1927 North American datum
10,000-foot grids based on New York coordinate system,
central and west zones
1000-meter Universal Transverse Mercator grid ticks,
zone 18, shown in blue



USGS
Historical File
Topographic Division



ROAD CLASSIFICATION
Heavy-duty ——— Light-duty ———
Medium-duty ——— Unimproved dirt ———
U. S. Route ——— State Route ———

NAPLES, N. Y.
SW 1/4 NAPLES 15' QUADRANGLE
N 4230—W 7722.5/7.5

1942

FOR SALE BY U. S. GEOLOGICAL SURVEY, WASHINGTON 25, D. C.
A FOLDER DESCRIBING TOPOGRAPHIC MAPS AND SYMBOLS IS AVAILABLE ON REQUEST

U.S.G.S.
FILE COPY
TOPOGRAPHIC DIVISION

JAN - 7 1960

3535