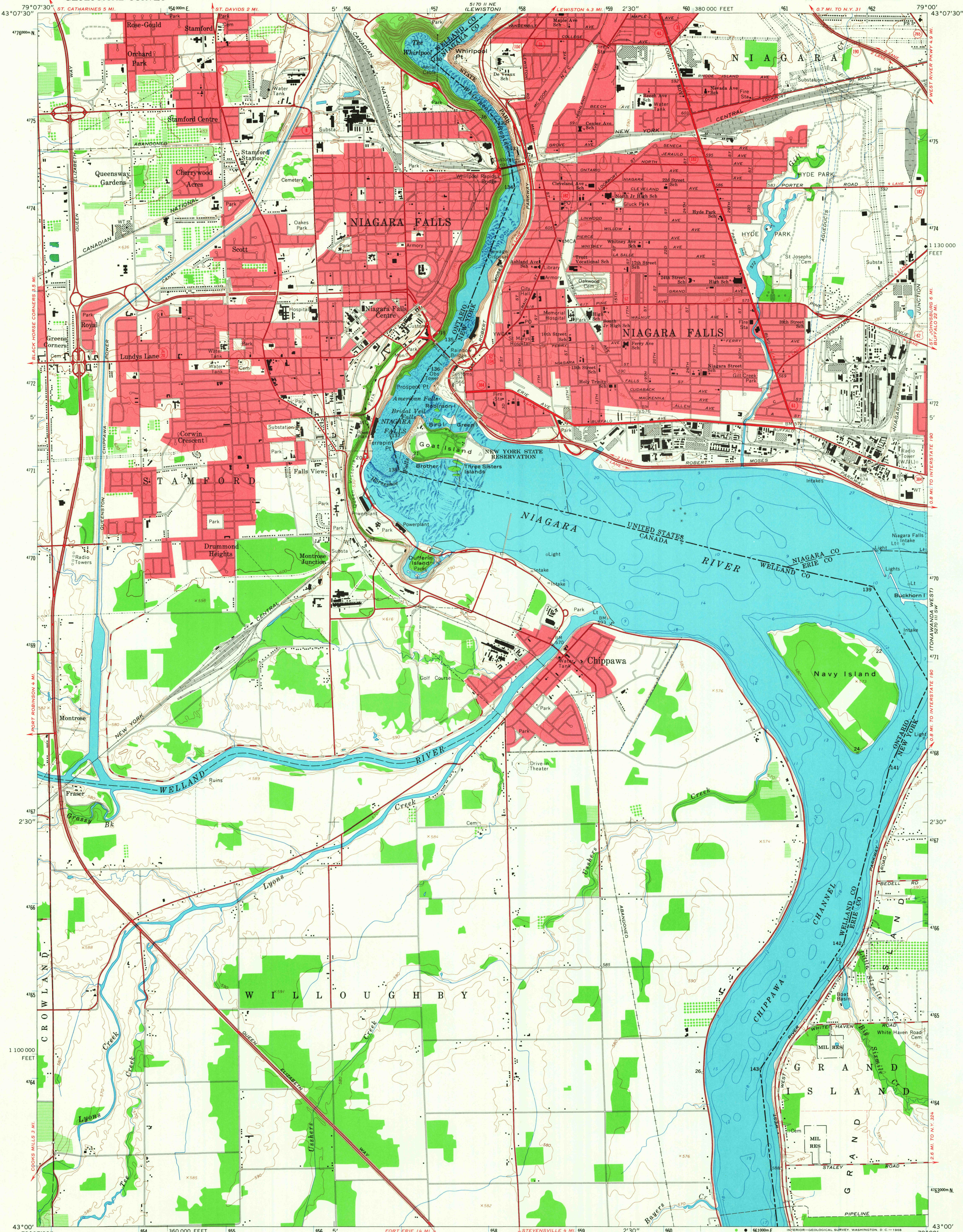
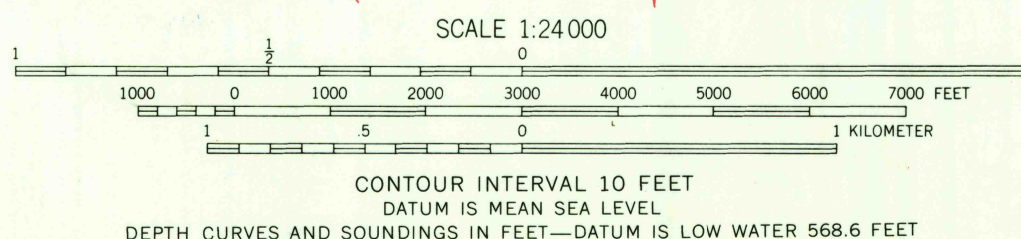


UNITED STATES
DEPARTMENT OF THE INTERIOR
GEOLOGICAL SURVEY

NIAGARA FALLS QUADRANGLE
ONTARIO-NEW YORK
7.5 MINUTE SERIES (TOPOGRAPHIC)
SE/4 NIAGARA FALLS 15' QUADRANGLE



Mapped, edited, and published by the Geological Survey in cooperation with New York Department of Public Works Control by USGS, USCGS, USCE, International Boundary Commission, and U.S. Lake Survey.
Planimetry compiled by U.S. Corps of Engineers from aerial photographs taken 1942. Topography by planimetry surveys 1948. Revised 1965.
Canadian portion mapped by the Surveys and Mapping Branch, Dept. of Mines and Technical Surveys 1961.
Selected hydrographic data compiled from U.S. Lake Survey Chart 312 (1965). This information is not intended for navigational purposes.
Polyconic projection. 1927 North American datum 10,000-foot grid based on New York coordinate system, west zone 1000-meter Universal Transverse Mercator grid ticks, zone 17, shown in blue.
Fine red dashed lines indicate selected fence and field lines where generally visible on aerial photographs. This information is unchecked.
Red tint indicates areas in which only landmark buildings are shown.



USGS
Historical File
Topographic Division

ROAD CLASSIFICATION
Heavy-duty ——— Light-duty ———
Medium-duty ——— Unimproved dirt ———
Interstate Route ——— U.S. Route ——— State Route ———

U.S.G.S.
FILE COPY
TOPOGRAPHIC DIVISION

NIAGARA FALLS, ONT.-N.Y.
SE/4 NIAGARA FALLS 15' QUADRANGLE
N4300—W7900/7.5

1965
AMS 5170 II SE—SERIES 7821

JUN 7 1968