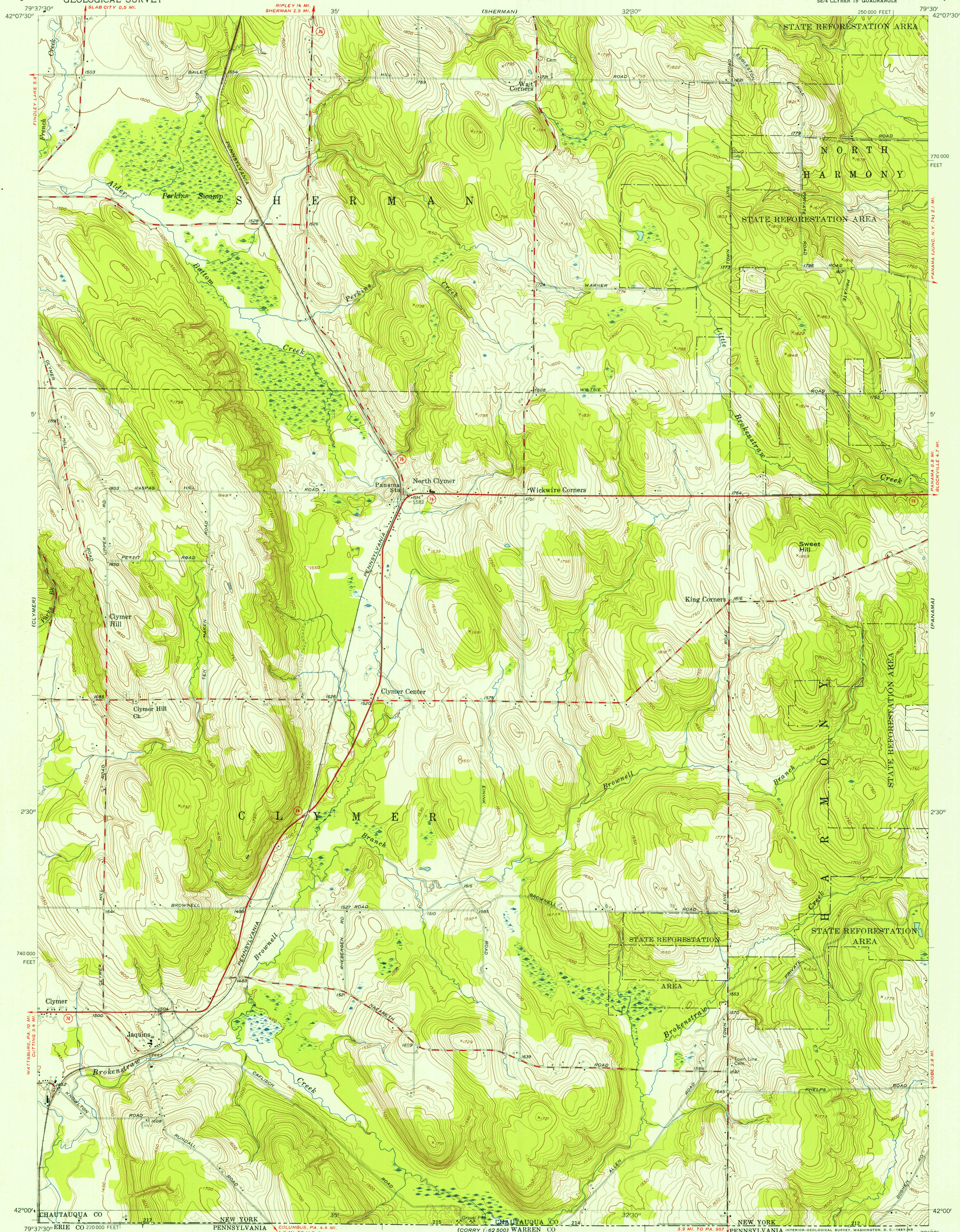
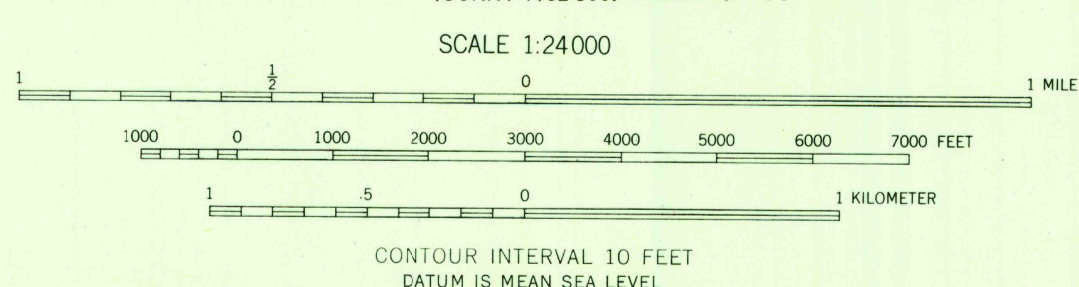


UNITED STATES
DEPARTMENT OF THE INTERIOR
GEOLOGICAL SURVEY

NORTH CLYMER QUADRANGLE
NEW YORK-CHAUTAUQUA CO.
7.5 MINUTE SERIES (TOPOGRAPHIC)
SE/4 CLYMER 15' QUADRANGLE



Mapped, edited, and published by the Geological Survey
Control by USGS
Topography from aerial photographs by photogrammetric
methods. Aerial photographs taken 1953. Field check 1954
Polyconic projection. 1927 North American datum
10,000-foot grid based on New York coordinate system,
west zone
Unchecked elevations are shown in brown



ROAD CLASSIFICATION
Heavy-duty ——— Light-duty ———
Medium-duty ——— Unimproved dirt ———
U.S. Route ——— State Route ———

NORTH CLYMER, N.Y.
SE/4 CLYMER 15' QUADRANGLE
N4200-W7930/7.5
1954

THIS MAP COMPLIES WITH NATIONAL MAP ACCURACY STANDARDS
FOR SALE BY U.S. GEOLOGICAL SURVEY, WASHINGTON 25, D.C.
A FOLDER DESCRIBING TOPOGRAPHIC MAPS AND SYMBOLS IS AVAILABLE ON REQUEST

U.S.G.S.
FILE COPY
TOPOGRAPHIC DIVISION

U.S.G.S.
FILE COPY
TOPOGRAPHIC DIVISION

FEB 15 1957

3185