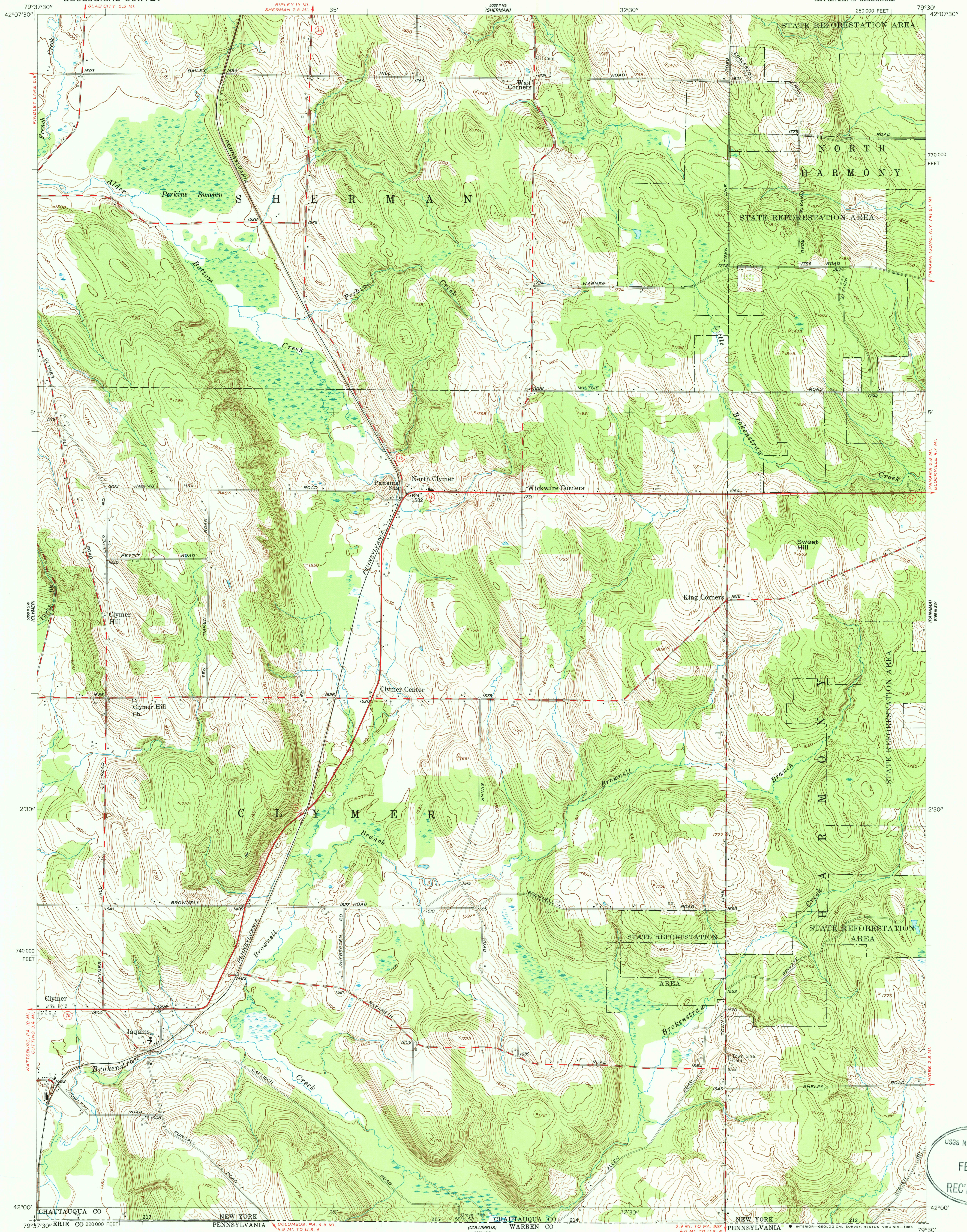


UNITED STATES
DEPARTMENT OF THE INTERIOR
GEOLOGICAL SURVEY

NORTH CLYMER QUADRANGLE
NEW YORK—CHAUTAUQUA CO.
7.5 MINUTE SERIES (TOPOGRAPHIC)
SE 1/4 CLYMER 15' QUADRANGLE



Mapped, edited, and published by the Geological Survey

Control by USGS and NOS/NOAA

Topography by photogrammetric methods from aerial
photographs taken 1953. Field checked 1954

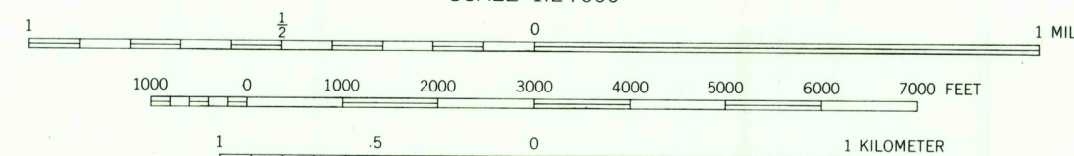
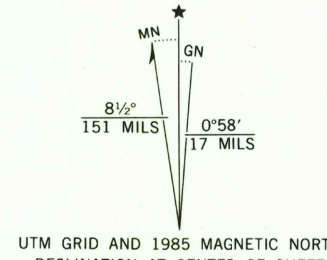
Polyconic projection. 10,000-foot grid ticks based on
New York coordinate system, west zone

1927 North American Datum

To place on the predicted North American Datum 1983
move the projection lines 2 meters south and
20 meters west as shown by dashed corner ticks

Unchecked elevations are shown in brown

There may be private inholdings within the boundaries of
the National or State reservations shown on this map



ROAD CLASSIFICATION
Heavy-duty —————
Medium-duty —————
Light-duty —————
Unimproved dirt —————
State Route ————○———

NORTH CLYMER, N.Y.
SE 1/4 CLYMER 15' QUADRANGLE
42079-A5-TF-024

1954
DMA 5068 II SE—SERIES V821

THE U.S. PORTION OF THIS MAP COMPLIES WITH NATIONAL MAP ACCURACY STANDARDS
FOR SALE BY U.S. GEOLOGICAL SURVEY, RESTON, VIRGINIA 22092
A FOLDER DESCRIBING TOPOGRAPHIC MAPS AND SYMBOLS IS AVAILABLE ON REQUEST

USGS NMD HISTORICAL MAP
FEB 25 1966
REC'D FILE COPY