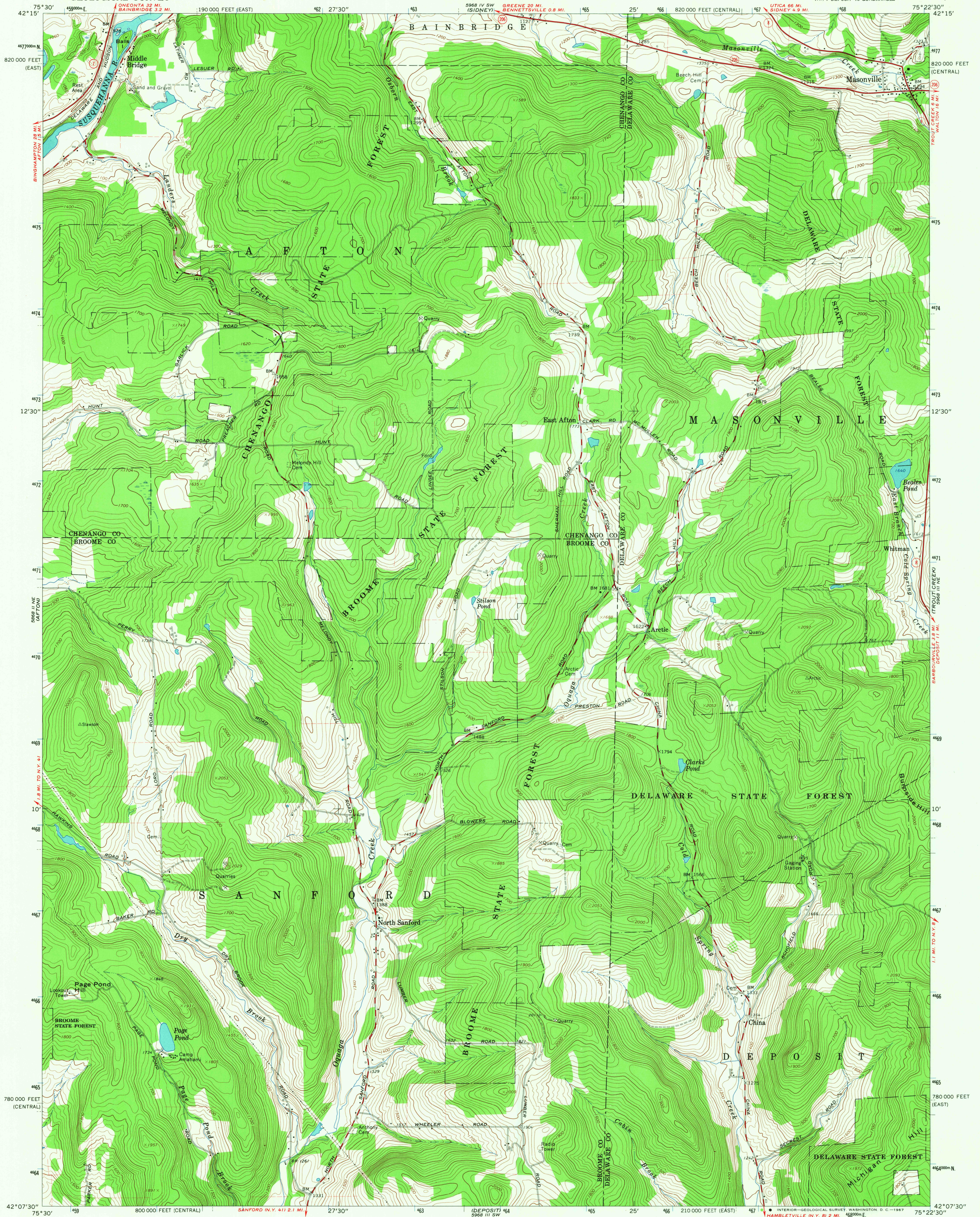


UNITED STATES  
DEPARTMENT OF THE INTERIOR  
GEOLOGICAL SURVEY

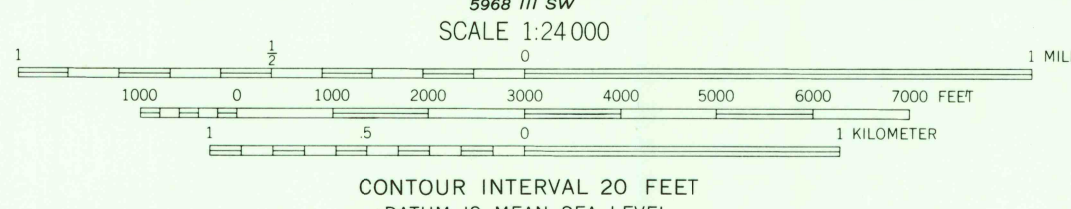
STATE OF NEW YORK  
DEPARTMENT OF PUBLIC WORKS

NORTH SANFORD QUADRANGLE  
NEW YORK  
7.5 MINUTE SERIES (TOPOGRAPHIC)  
NW 4 DEPOSIT 15 QUADRANGLE



Maped, edited, and published by the Geological Survey  
Control by USGS and USC&GS  
Topography by photogrammetric methods from aerial  
photographs taken 1963. Field checked 1965  
Polyconic projection. 1927 North American datum  
10,000-foot grids based on New York coordinate system,  
central and east zones  
1000-meter Universal Transverse Mercator grid ticks,  
zone 18, shown in blue  
Fine red dashed lines indicate selected fence and field lines where  
generally visible on aerial photographs. This information is unchecked

UTM GRID AND 1965 MAGNETIC NORTH  
DECLINATION AT CENTER OF SHEET



USGS  
Historical File  
Topographic Division

U.S.G.S.  
FILE COPY  
TOPOGRAPHIC DIVISION

ROAD CLASSIFICATION  
Heavy-duty ——— Light-duty ———  
Medium-duty ——— Unimproved dirt ———  
State Route ———  
NORTH SANFORD, N. Y.  
NW 4 DEPOSIT 15 QUADRANGLE  
N4207.5—W7522.5/7.5  
1965  
AMS 5968 III NW—SERIES V821

3670  
DEC 15 1967