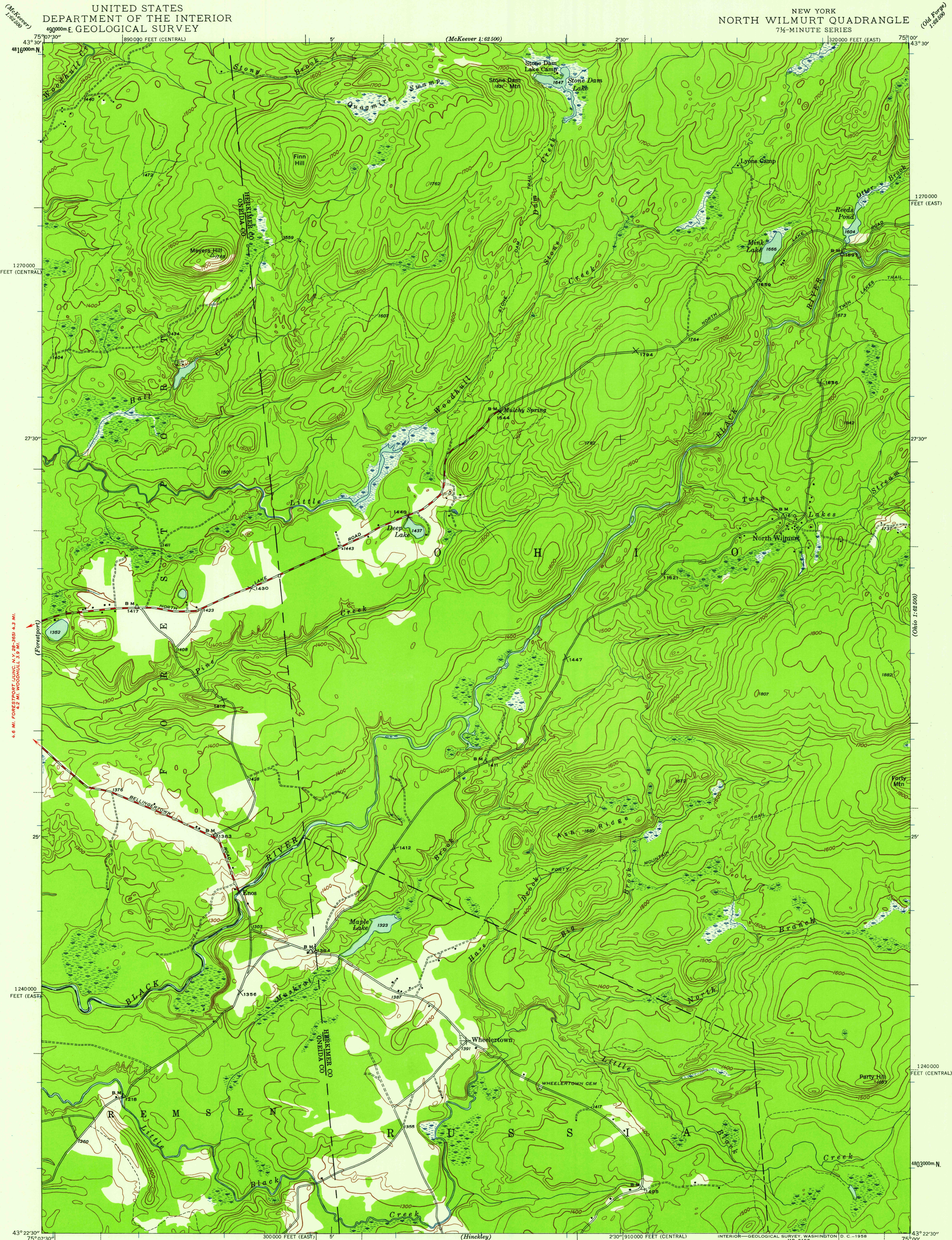


UNITED STATES
DEPARTMENT OF THE INTERIOR
GEOLOGICAL SURVEY

NEW YORK
NORTH WILMURT QUADRANGLE
7½-MINUTE SERIES



Mapped by the Geological Survey
1946

All of Herkimer County shown on
this map is within Adirondack Park

ROAD CLASSIFICATION
Medium-duty ——— Light-duty ———
Unimproved dirt ———

APPROXIMATE MEAN
DECLINATION, 1946

SCALE 1:24000
1 0 1000 2000 3000 4000 5000 6000 7000 FEET
1 0 5 10 KILOMETER
CONTOUR INTERVAL 20 FEET
DATUM IS MEAN SEA LEVEL

FOR SALE BY U.S. GEOLOGICAL SURVEY, WASHINGTON 25, D. C.
A FOLDER DESCRIBING TOPOGRAPHIC MAPS AND SYMBOLS IS AVAILABLE ON REQUEST

Polyconic projection. 1927 North American datum
10,000-foot grids based on New York (East) and
New York (Central) rectangular coordinate systems
1000-meter Universal Transverse Mercator grid ticks,
zone 18, shown in blue

NORTH WILMURT, N. Y.
N 4322.5—W 7500/7.5

1946

U.S.G.S.
FILE COPY
TOPOGRAPHIC DIVISION

SEP 11 1958

2885