

73°22'30" 41°00' 1370000 E 138 139 140 20' 141 143 17'30" 144 2 200 000 FEET 146 73°15' 41°00'

280 000 FEET 439

438

437

436

57'30" 435

434

433

432

431

55' 430

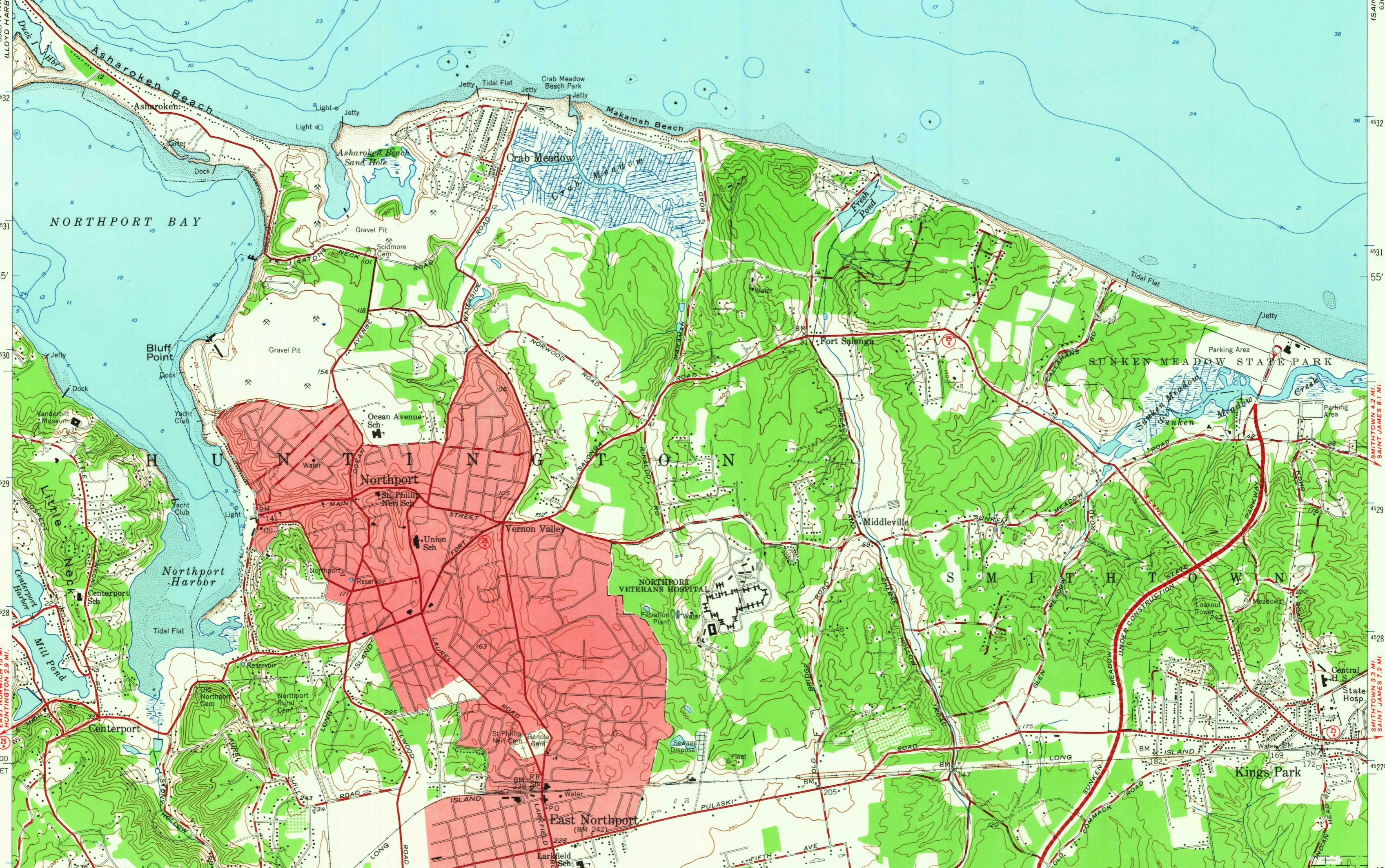
429

428

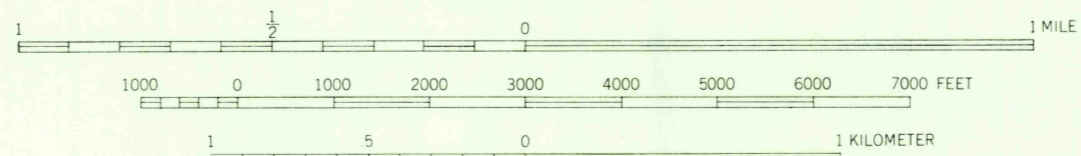
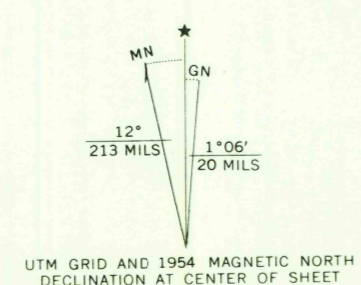
427

40°52'30" 73°22'30" 240 000 FEET 426

# L O N G I S L A N D S O U N D



Mapped by the Army Map Service  
Edited and published by the Geological Survey  
Control by USGS, USC&GS, and USCE  
Culture and drainage in part compiled from aerial photographs taken 1940. Topography by plane-table surveys. Culture revised by the Geological Survey 1954  
Hydrography from USC&GS charts 221, 224 and 1213 dated 1941, 1943 and 1947  
Polyconic projection. 1927 North American datum 10,000-foot grid based on New York coordinate system, Long Island zone  
Red tint indicates area in which only landmark buildings are shown  
1000-meter Universal Transverse Mercator grid ticks, zone 18, shown in blue



CONTOUR INTERVAL 20 FEET  
DATUM IS MEAN SEA LEVEL  
DEPTH CURVES AND SOUNDINGS IN FEET—DATUM IS MEAN LOW WATER  
SHORELINE SHOWN REPRESENTS THE APPROXIMATE LINE OF MEAN HIGH WATER  
THE MEAN RANGE OF TIDE IS 7.3 FEET  
THIS MAP COMPLIES WITH NATIONAL MAP ACCURACY STANDARDS  
FOR SALE BY U. S. GEOLOGICAL SURVEY, WASHINGTON, D. C. 20242  
A FOLDER DESCRIBING TOPOGRAPHIC MAPS AND SYMBOLS IS AVAILABLE ON REQUEST

USGS  
Historical File  
Topographic Division



ROAD CLASSIFICATION  
Heavy-duty ——— Light-duty ———  
Medium-duty ——— Unimproved dirt ———  
U. S. Route ——— State Route ———

U.S.G.S.  
FILE COPY  
TOPOGRAPHIC DIVISION

NORTHPORT, N. Y.  
NE/4 NORTHPORT 15' QUADRANGLE  
N4052.5—W7315.7.5  
1954  
AMS 6365 IV NE—SERIES W821

JUN 28 1967  
3550