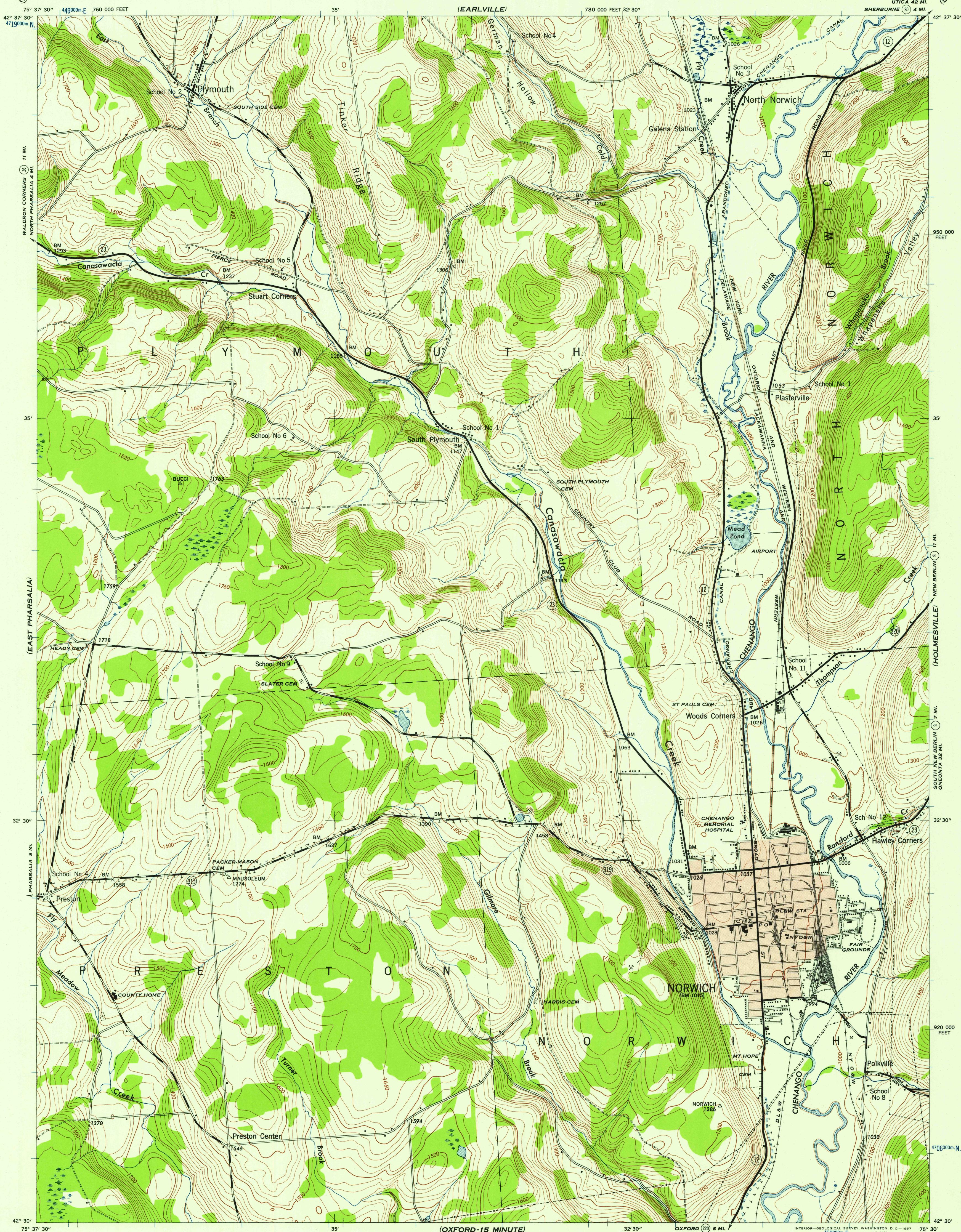


NEW YORK 1:24,000
(CHENANGO COUNTY)

WAR DEPARTMENT
CORPS OF ENGINEERS

NORWICH QUADRANGLE
7½-MINUTE SERIES



Map by Tennessee Valley Authority under direction of the
Chief of Engineers, U. S. Army, 1944.
Control by USGS, USGS, and TVA.
Topography by U. S. Geological Survey and Tennessee Valley Authority
by Stereophotogrammetric methods (Multiplex).
Field completion surveys by TVA.
Wide-angle photography for TVA, 1942.
Polyconic projection. 1927 North American datum.

ROAD CLASSIFICATION
1943
Dependable hard-surface,
all-weather road. ——— U. S. Route
Loose-surface graded,
dry weather road. ——— State Route
Secondary, hard-surface,
all-weather road. ——— 3 LANE 4 LANE
More than two lanes indicated by note along road with tick at point of change.
Gray tint indicates areas in which only landmark buildings are shown.
THIS MAP COMPLIES WITH THE NATIONAL STANDARD MAP ACCURACY REQUIREMENTS.

SCALE 1:24,000
ONE THOUSAND METER UNIVERSAL TRANSVERSE MERCATOR GRID TICS, ZONE 18, SHOWN IN BLUE
TEN THOUSAND FOOT GRID BASED ON NEW YORK PLANE COORDINATE SYSTEM, CENTRAL ZONE
REPRINTED FROM MILITARY EDITION FOR CIVIL USE
FOR SALE BY U. S. GEOLOGICAL SURVEY, WASHINGTON 25, D. C.
A FOLDER DESCRIBING TOPOGRAPHIC MAPS AND SYMBOLS IS AVAILABLE ON REQUEST

USGS
Historical File
Topographic Division
APPROXIMATE MEAN
DECLINATION, 1944

NORWICH, N. Y.
N4230-W7530/7.5
EDITION OF 1944

U.S.G.S.
FILE COPY
TOPOGRAPHIC DIVISION

U.S.G.S.
FILE COPY
TOPOGRAPHIC DIVISION

1640