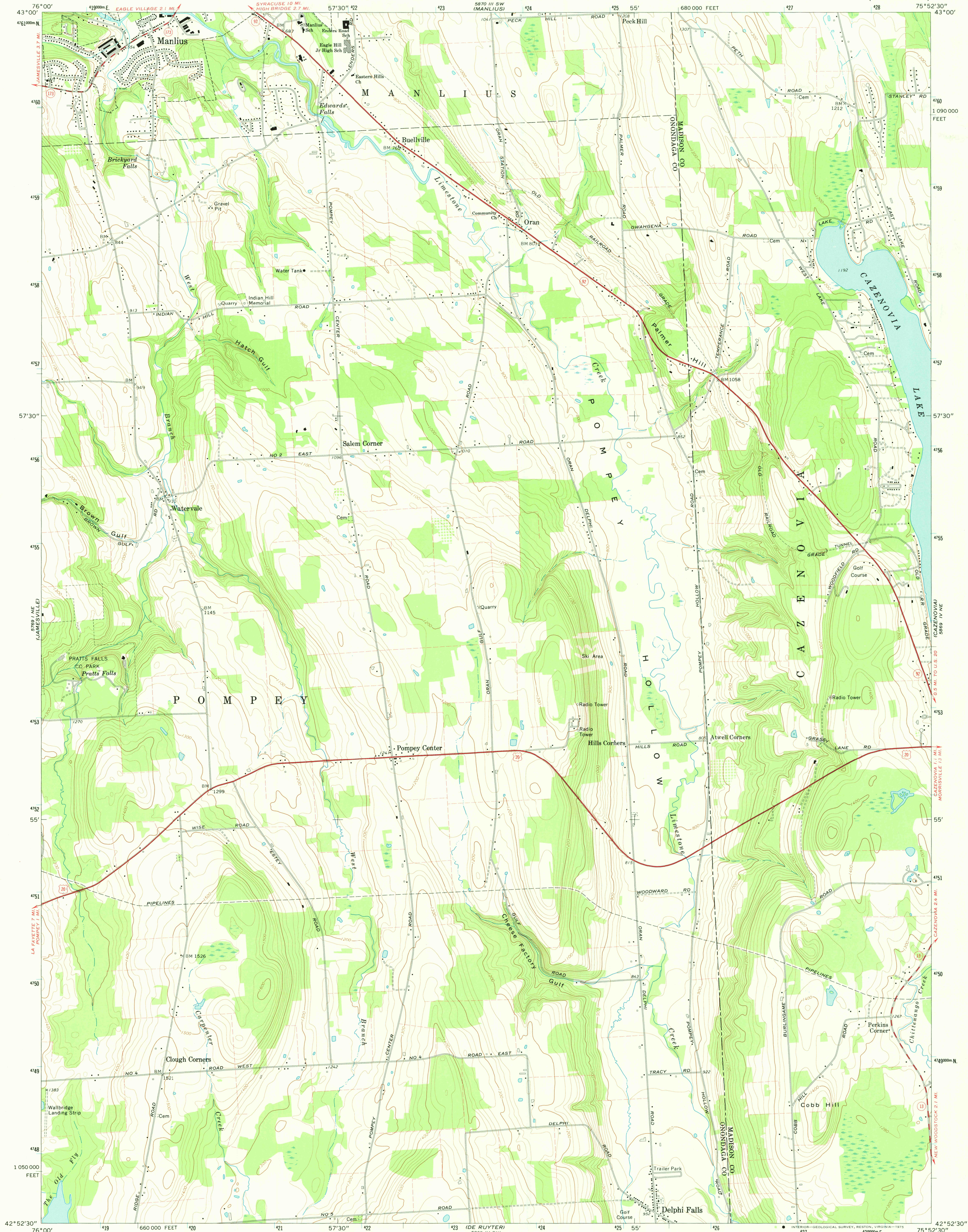


UNITED STATES  
DEPARTMENT OF THE INTERIOR  
GEOLOGICAL SURVEY

STATE OF NEW YORK  
DEPARTMENT OF TRANSPORTATION

ORAN QUADRANGLE  
NEW YORK  
7.5 MINUTE SERIES (TOPOGRAPHIC)



Mapped, edited, and published by the Geological Survey

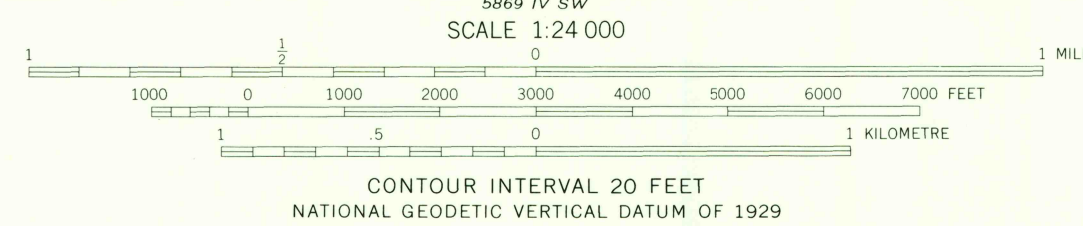
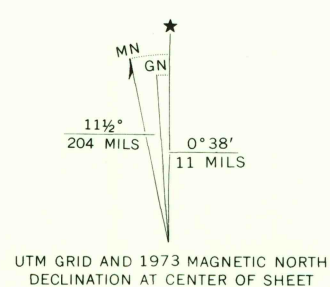
Control by USGS and NOS/NOAA

Topography taken from 1:24 000 scale Army Map Service map dated 1943. Original map by photogrammetric methods from aerial photographs taken 1942.

Planimetry by photogrammetric methods from aerial photographs taken 1972. Field checked 1973.

Projection and 10,000-foot grid ticks: New York coordinate system, central zone (transverse Mercator). 1000-metre Universal Transverse Mercator grid ticks, zone 18, shown in blue. 1927 North American datum.

Fine red dashed lines indicate selected fence and field lines where generally visible on aerial photographs. This information is unchecked.



ROAD CLASSIFICATION	
Primary highway, hard surface	Light-duty road, hard or improved surface
Secondary highway, hard surface	Unimproved road
Interstate Route	U.S. Route
	State Route

USGS  
HISTORICAL FILE  
TOPOGRAPHIC DIVISION

ORAN, N. Y.  
N4252.5-W7552.5/7.5

1973

AMS 5869 IV NW-SERIES V821

MAY 20 1975