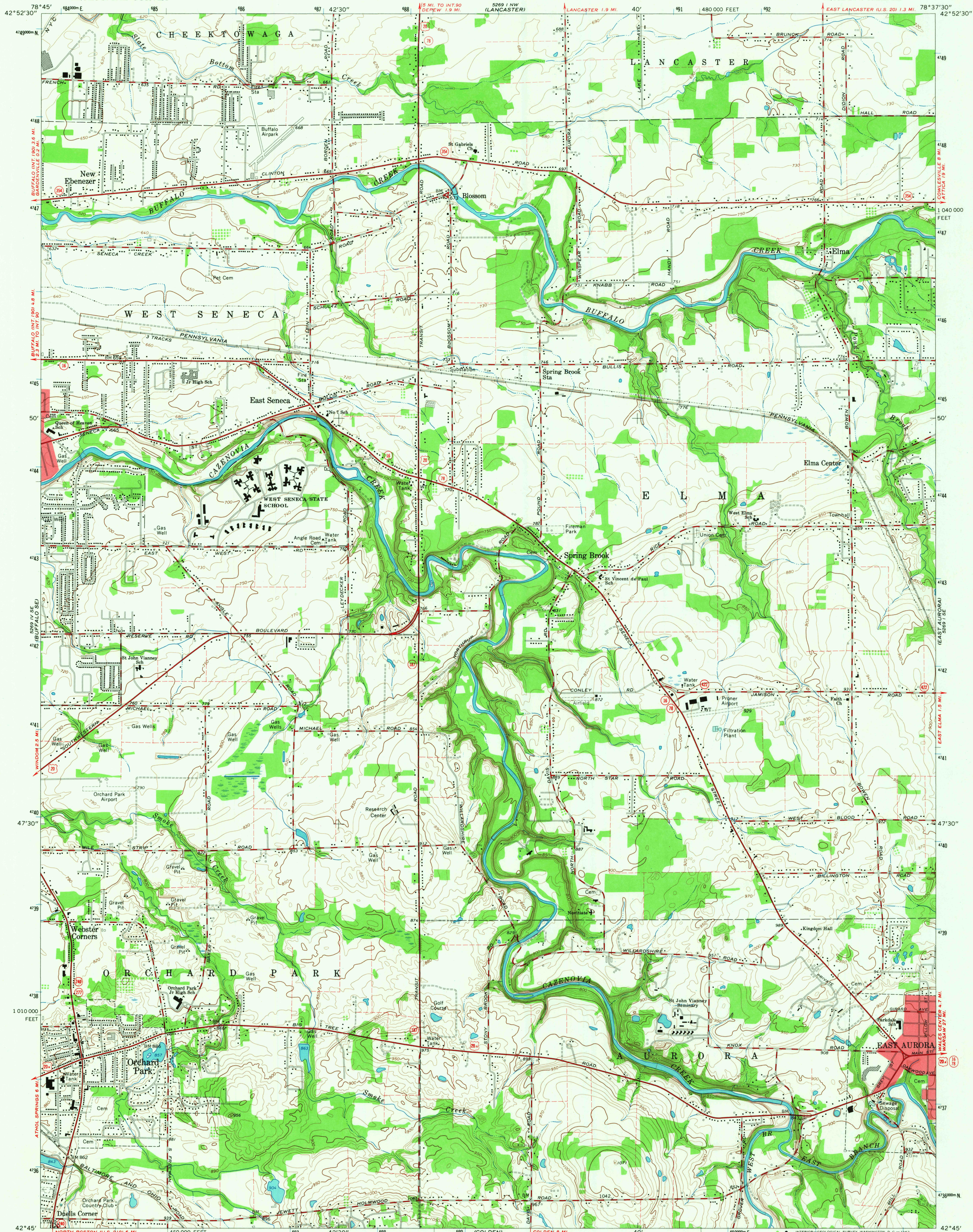
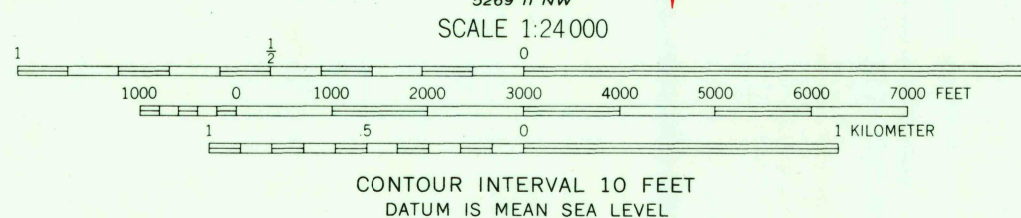


UNITED STATES  
DEPARTMENT OF THE INTERIOR  
GEOLOGICAL SURVEY

ORCHARD PARK QUADRANGLE  
NEW YORK-ERIE CO.  
7.5 MINUTE SERIES (TOPOGRAPHIC)  
SW 1/4 DEPEW 15' QUADRANGLE



Mapped, edited, and published by the Geological Survey  
in cooperation with New York Department of Public Works  
Control by USGS, USCGS, and USCE  
Planimetry compiled by U. S. Corps of Engineers  
from aerial photographs taken 1942. Topography by  
planimetry surveys 1948. Revised 1965  
Polyconic projection. 1927 North American datum  
10,000 foot grid based on New York coordinate system, west zone  
1000-meter Universal Transverse Mercator grid ticks,  
zone 17, shown in blue  
Fine red dashed lines indicate selected fence and field lines where  
generally visible on aerial photographs. This information is unchecked  
Red tint indicates areas in which only landmark buildings are shown



USGS  
Historical File  
Topographic Division  
QUADRANGLE LOCATION  
NEW YORK

ROAD CLASSIFICATION  
Heavy-duty ——— Light-duty ———  
Medium-duty ——— Unimproved dirt ———  
U. S. Route ——— State Route ———

ORCHARD PARK, N. Y.  
SW 1/4 DEPEW 15' QUADRANGLE  
N4245—W7837.5/7.5  
1965  
AMS 5269 1 SW—SERIES V821

U.S.G.S.  
TOPOGRAPHIC DIVISION  
3695  
APR 25 1967