

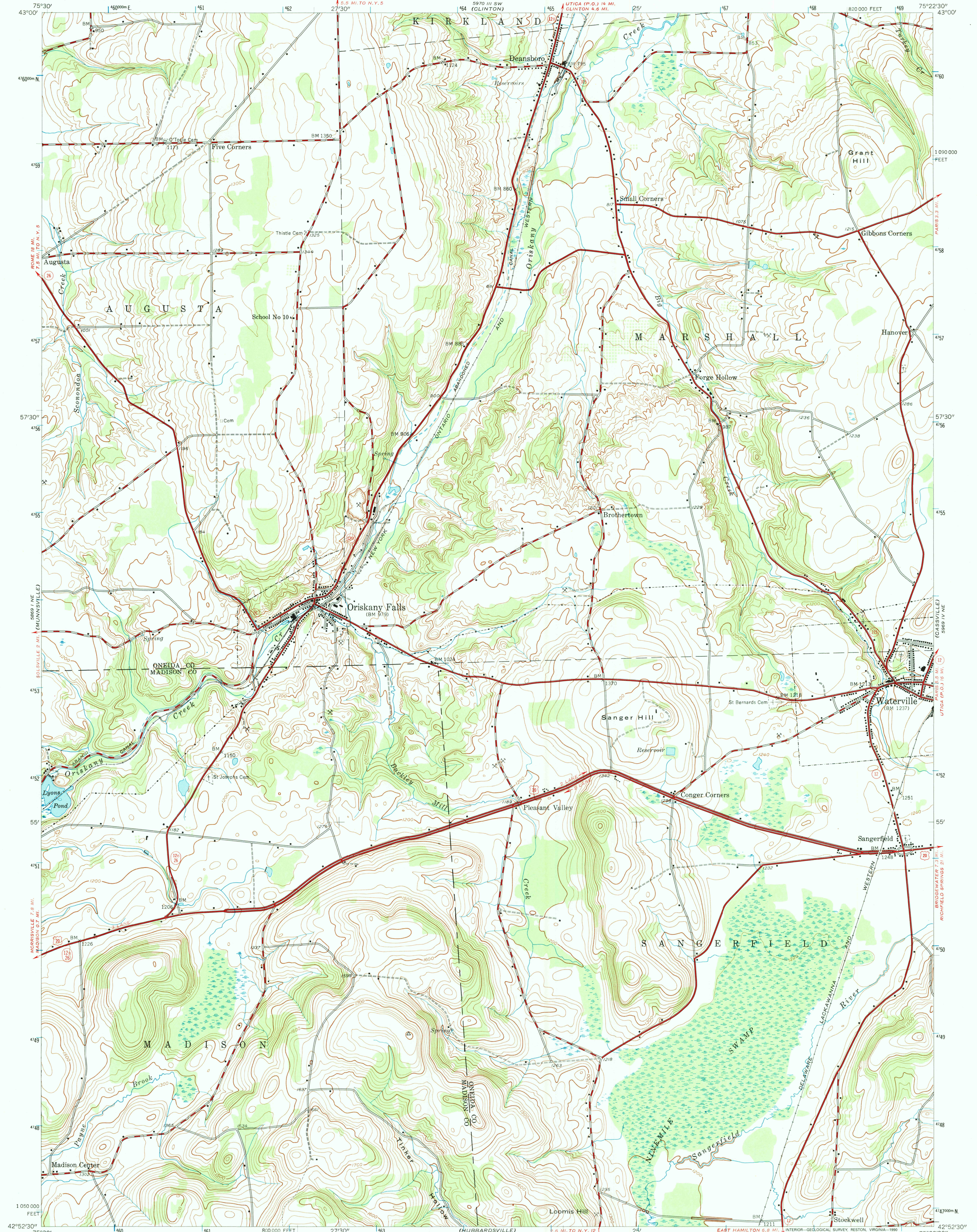
589 IV SE  
(VERNON)

UNITED STATES  
DEPARTMENT OF THE INTERIOR  
GEOLOGICAL SURVEY

UNITED STATES  
DEPARTMENT OF THE ARMY  
CORPS OF ENGINEERS

ORISKANY FALLS QUADRANGLE  
NEW YORK  
7.5 MINUTE SERIES (TOPOGRAPHIC)  
NW 1/4 SANGERFIELD 15' QUADRANGLE  
NW 1/4 SANGERFIELD 15' QUADRANGLE

589 IV SE  
(UTICA WEST)



Mapped by the Army Map Service  
Published for civil use by the Geological Survey  
Control by USGS, USC&GS, and TVA  
Topography from aerial photographs by photogrammetric methods  
Aerial photographs taken 1942. Field check 1943  
Polyconic projection. 1927 North American datum  
10,000-foot grid based on New York coordinate system, central zone  
1000-meter Universal Transverse Mercator grid ticks,  
zone 18, shown in blue

Map photoinspected 1976  
No major culture or drainage changes observed

UTM GRID AND 1943 MAGNETIC NORTH  
DECLINATION AT CENTER OF SHEET

SCALE 1:24,000  
CONTOUR INTERVAL 20 FEET  
DATUM IS MEAN SEA LEVEL

THIS MAP COMPLIES WITH NATIONAL MAP ACCURACY STANDARDS  
FOR SALE BY U.S. GEOLOGICAL SURVEY, DENVER, COLORADO 80225  
OR RESTON, VIRGINIA 22092  
A FOLDER DESCRIBING TOPOGRAPHIC MAPS AND SYMBOLS IS AVAILABLE ON REQUEST

ROAD CLASSIFICATION  
Heavy-duty ——— Light-duty ———  
Medium-duty ——— Unimproved dirt ———  
U.S. Route ——— State Route ———

USGS NMD HISTORICAL MAP  
JUN 13 1991  
REC'D FILE COPY

ORISKANY FALLS, N.Y.  
NW 1/4 SANGERFIELD 15' QUADRANGLE  
N 4252.5—W 7522.5/7.5  
1943  
PHOTOINSPECTED 1976  
AMS 5969 IV NW—SERIES 7821