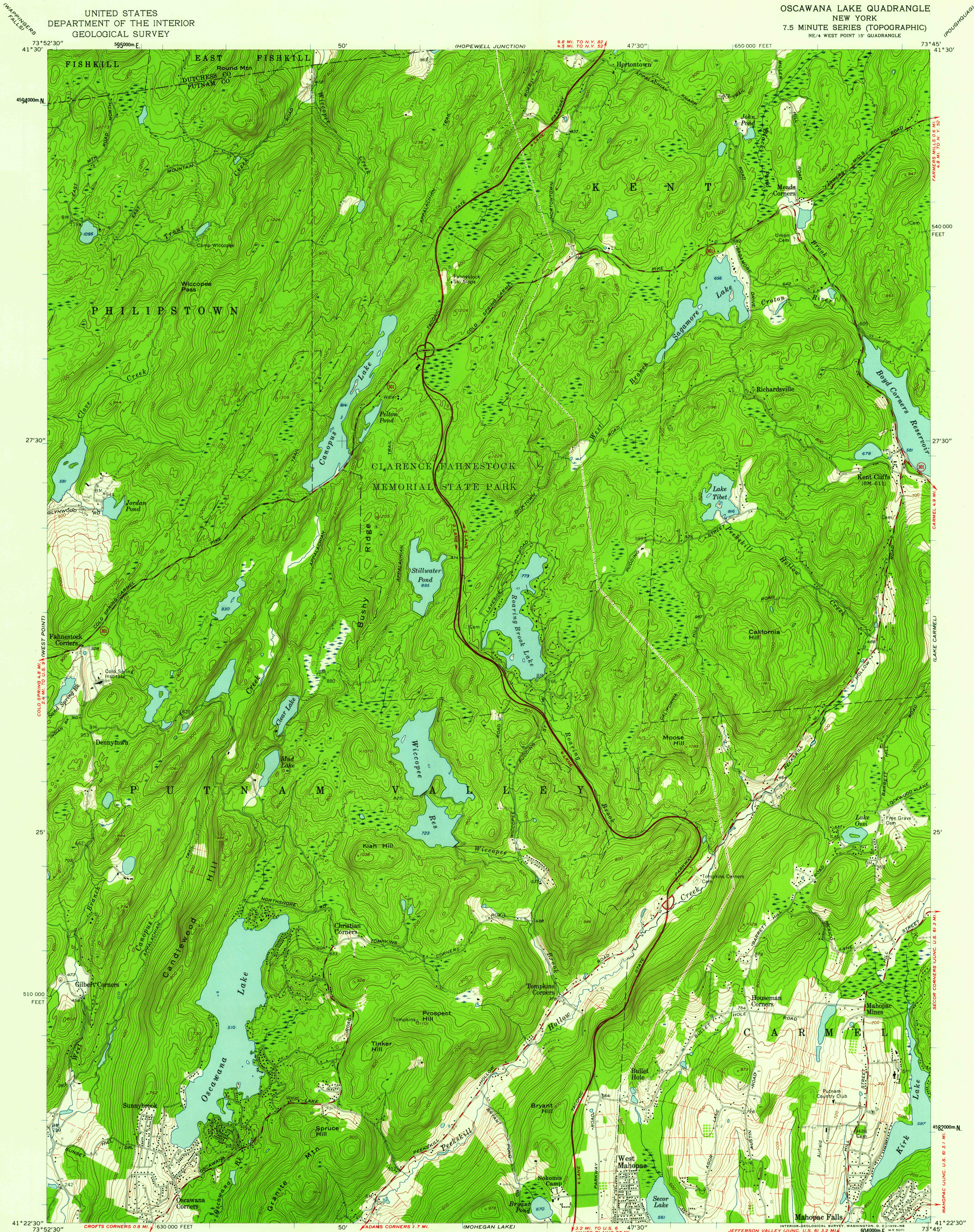


UNITED STATES
DEPARTMENT OF THE INTERIOR
GEOLOGICAL SURVEY

OSCAWANA LAKE QUADRANGLE
NEW YORK
7.5 MINUTE SERIES (TOPOGRAPHIC)
NE/4 WEST POINT 15' QUADRANGLE



Maped, edited, and published by the Geological Survey
Control by USGS and USC&GS
Topography from aerial photographs by photogrammetric methods
Aerial photographs taken 1955 and 1956. Field check 1956
Polyconic projection. 1927 North American datum
10,000-foot grid based on New York coordinate system, east zone
1000-meter Universal Transverse Mercator grid ticks,
zone 18, shown in blue
Fine red dashed lines indicate selected fence and field lines
visible on aerial photographs. This information is unchecked
Unchecked elevations are shown in brown

APPROXIMATE MEAN
DECLINATION, 1956

SCALE 1:24,000
CONTOUR INTERVAL 20 FEET
DATUM IS MEAN SEA LEVEL

THIS MAP COMPLIES WITH NATIONAL MAP ACCURACY STANDARDS
FOR SALE BY U. S. GEOLOGICAL SURVEY, WASHINGTON 25, D. C.
A FOLDER DESCRIBING TOPOGRAPHIC MAPS AND SYMBOLS IS AVAILABLE ON REQUEST

USGS
Historical File
Topographic Division
NEW YORK
QUADRANGLE LOCATION

ROAD CLASSIFICATION
Heavy duty ————
Medium duty ————
Light duty ————
Unimproved dirt ————
State Route

OSCAWANA LAKE, N. Y.
NE/4 WEST POINT 15' QUADRANGLE
N4122.5—W7345.7/5

1956

U.S.G.S.
FILE COPY
TOPOGRAPHIC DIVISION

JAN 20 1959

3325