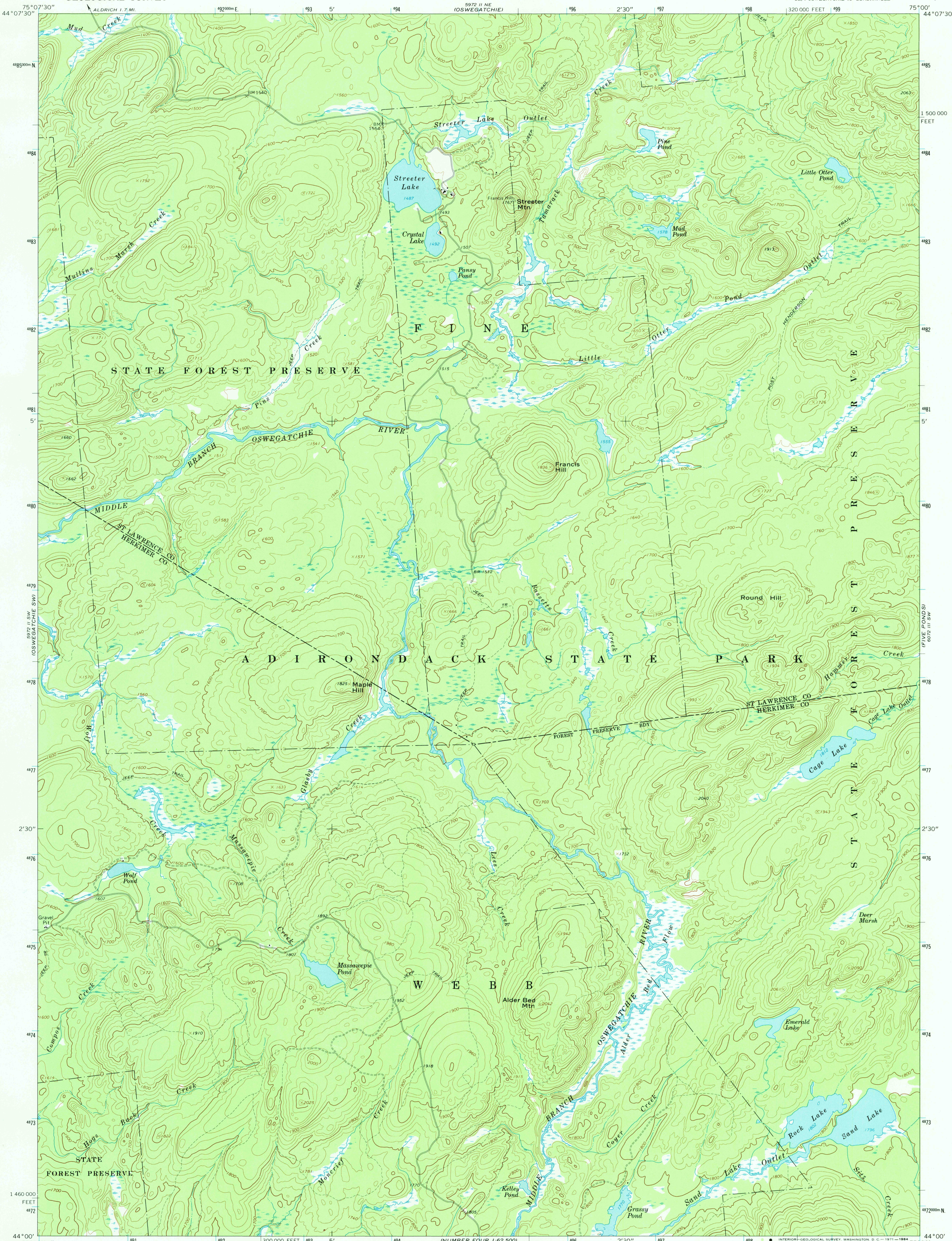
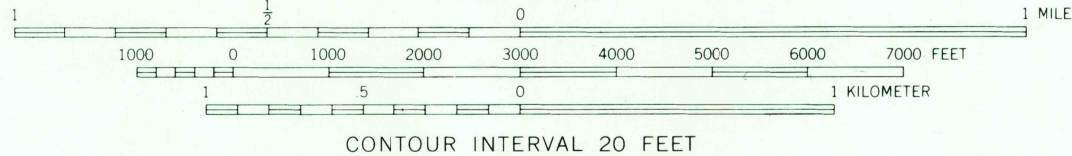
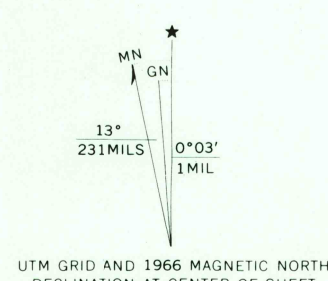


59°21'11"N
75°07'30"W
44°07'30"N

60°21'11"N
75°00'00"W
44°07'30"N



Mapped, edited, and published by the Geological Survey
Control by USGS and USC&GS
Topography by photogrammetric methods from aerial
photographs taken 1966. Field checked 1966
Polyconic projection. 1927 North American datum
10,000-foot grid based on New York coordinate system, east zone
1000-meter Universal Transverse Mercator grid ticks, zone 18,
shown in blue
Map photoinspected 1980
No major culture or drainage changes observed



CONTOUR INTERVAL 20 FEET
DATUM IS MEAN SEA LEVEL



ROAD CLASSIFICATION
Light-duty road, all weather, Unimproved road, fair or dry
Improved surface weather

OSWEGATCHIE SE, N. Y.
SE/4 OSWEGATCHIE 15' QUADRANGLE
N4400—W7500/7.5

1966
PHOTOINSPECTED 1980
AMS 5972 II SE—SERIES V821

THIS MAP COMPLIES WITH NATIONAL MAP ACCURACY STANDARDS
FOR SALE BY U. S. GEOLOGICAL SURVEY, WASHINGTON, D. C. 20242
A FOLDER DESCRIBING TOPOGRAPHIC MAPS AND SYMBOLS IS AVAILABLE ON REQUEST

1966 AND HISTORICAL MAP ARCHIVES