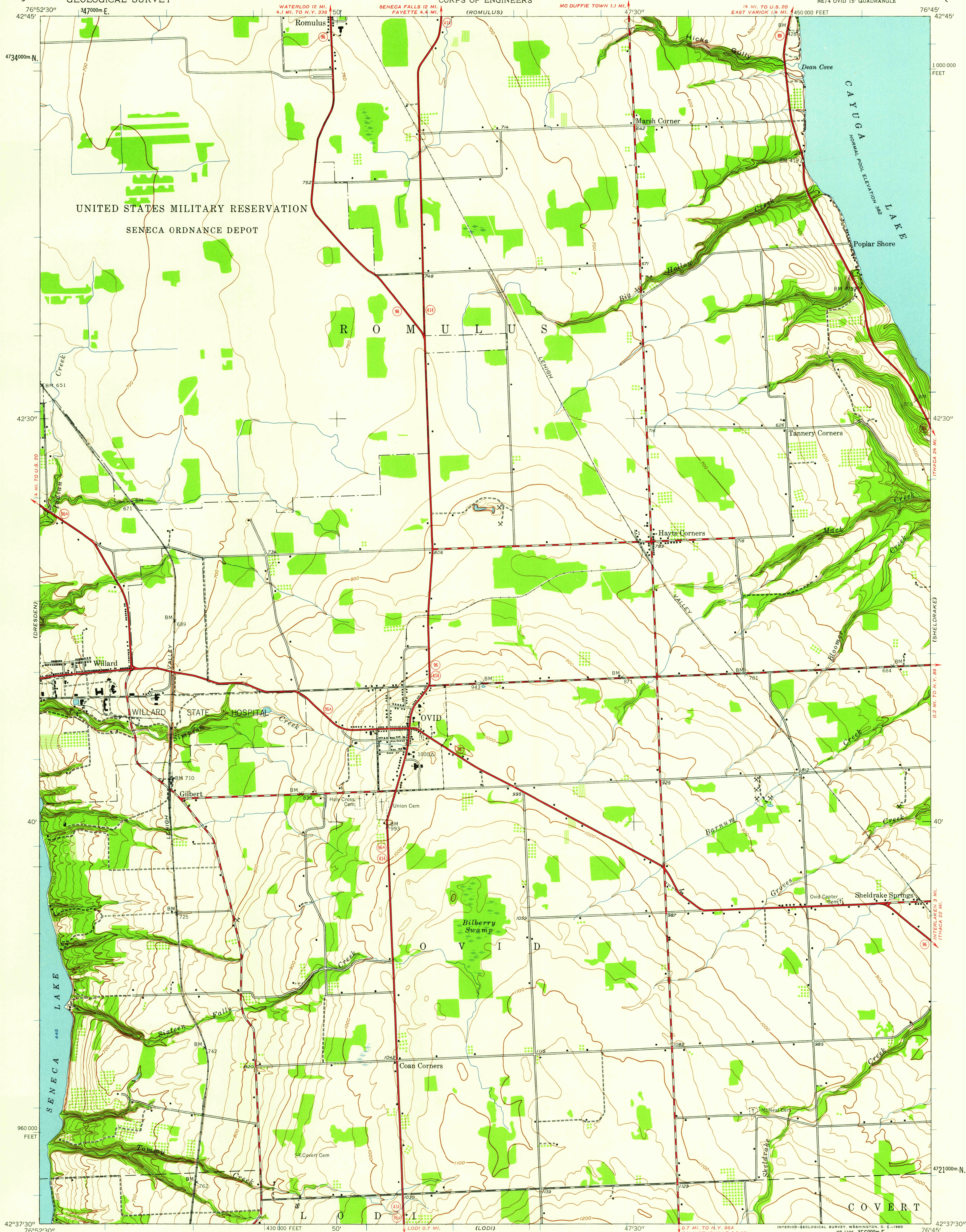


UNITED STATES  
DEPARTMENT OF THE INTERIOR  
GEOLOGICAL SURVEY

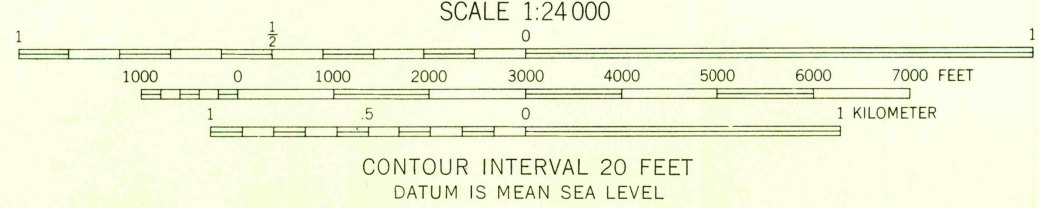
UNITED STATES  
DEPARTMENT OF THE ARMY  
CORPS OF ENGINEERS

OVID QUADRANGLE  
NEW YORK-SENECA CO.  
7.5 MINUTE SERIES (TOPOGRAPHIC)  
NE 1/4 OVID 15' QUADRANGLE



Mapped by the Army Map Service  
Published for civil use by the Geological Survey  
Control by USC&GS, TVA, and U. S. Lake Survey  
Topography from aerial photographs by photogrammetric methods  
Aerial photographs taken 1942. Field check 1942  
Polyconic projection. 1927 North American datum  
10,000-foot grid based on New York coordinate system, central zone  
1000-meter Universal Transverse Mercator grid ticks,  
zone 18, shown in blue

10°  
TRUE NORTH  
MAGNETIC NORTH  
APPROXIMATE MEAN  
DECLINATION, 1942



FOR SALE BY U. S. GEOLOGICAL SURVEY, WASHINGTON 25, D. C.  
A FOLDER DESCRIBING TOPOGRAPHIC MAPS AND SYMBOLS IS AVAILABLE ON REQUEST

Historical File  
Topographic Division



ROAD CLASSIFICATION  
Heavy-duty ——— Light-duty ———  
Medium-duty ——— Unimproved dirt ———  
State Route ———

U.S.G.S.  
FILE COPY  
TOPOGRAPHIC DIVISION

OVID, N. Y.  
NE 1/4 OVID 15' QUADRANGLE  
N 4237.5—W 7645/7.5

1942

APR 27 1960

3030