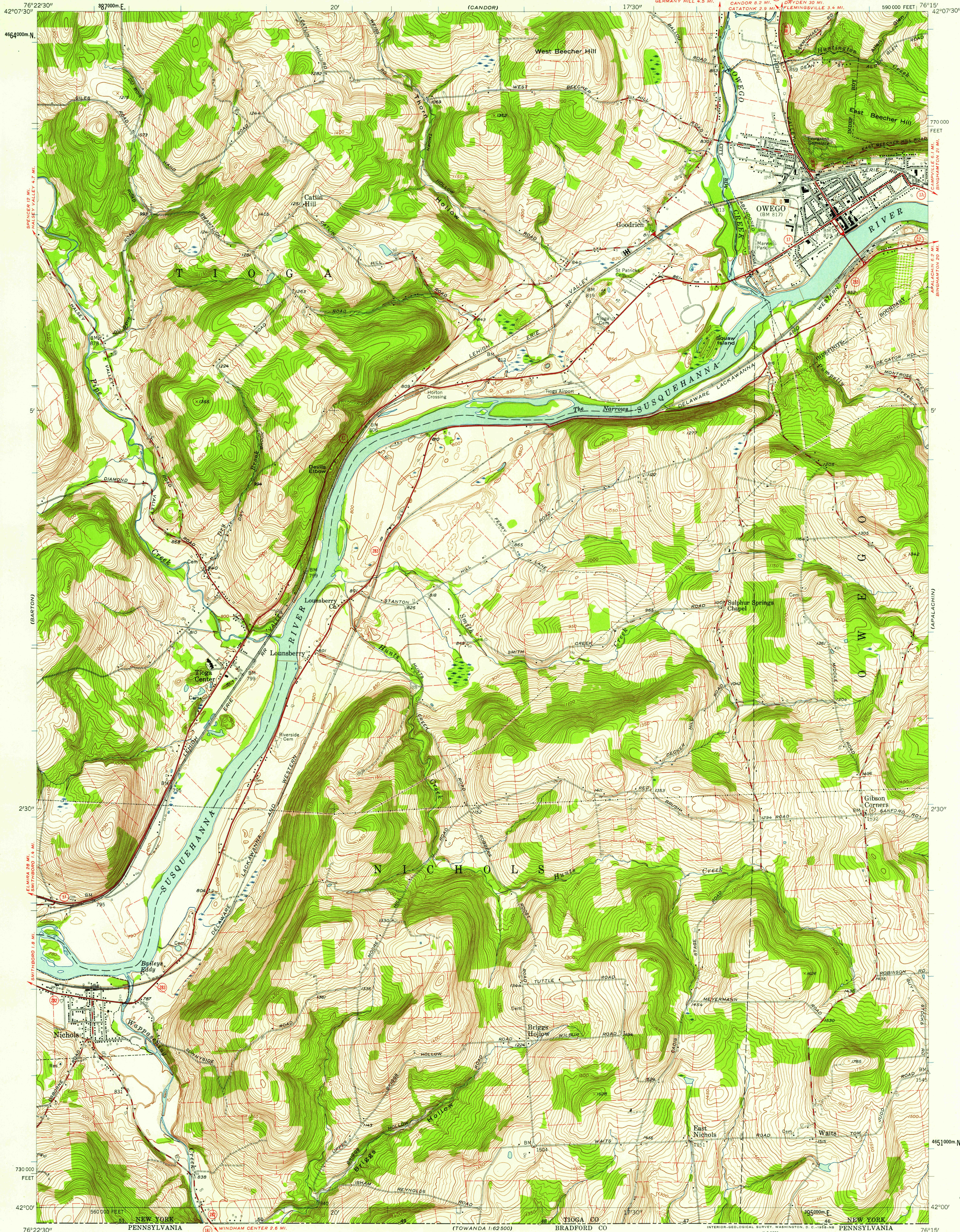


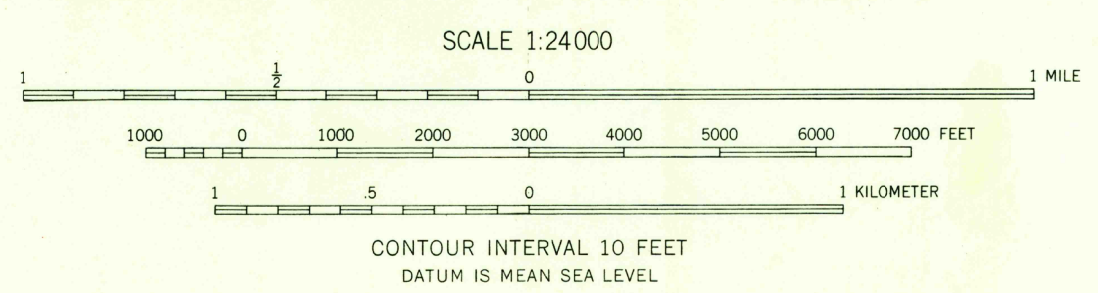
UNITED STATES  
DEPARTMENT OF THE INTERIOR  
GEOLOGICAL SURVEY

OWEGO QUADRANGLE  
NEW YORK—TIOGA CO.  
7.5 MINUTE SERIES (TOPOGRAPHIC)  
SE/4 OWEGO 15' QUADRANGLE



Maped, edited, and published by the Geological Survey  
Control by USGS and USC&GS  
Topography from aerial photographs by multiplex methods  
Aerial photographs taken 1944 and 1948. Field check 1956  
Polyconic projection. 1927 North American datum  
10,000-foot grid based on New York coordinate system,  
central zone  
1000-meter Universal Transverse Mercator grid ticks,  
zone 18, shown in blue  
Fine red dashed lines indicate selected fence and field lines  
visible on aerial photographs. This information is unchecked

APPROXIMATE MEAN  
DECLINATION, 1956



USGS  
Historical File  
Topographic Division

ROAD CLASSIFICATION  
Heavy-duty ——— Light-duty ———  
Medium-duty ——— Unimproved dirt ———  
State Route



OWEGO, N. Y.  
SE/4 OWEGO 15' QUADRANGLE  
N4200—W7615/7.5

1956

U.S.G.S.  
FILE COPY  
TOPOGRAPHIC DIVISION

JUN 10 1958  
3390