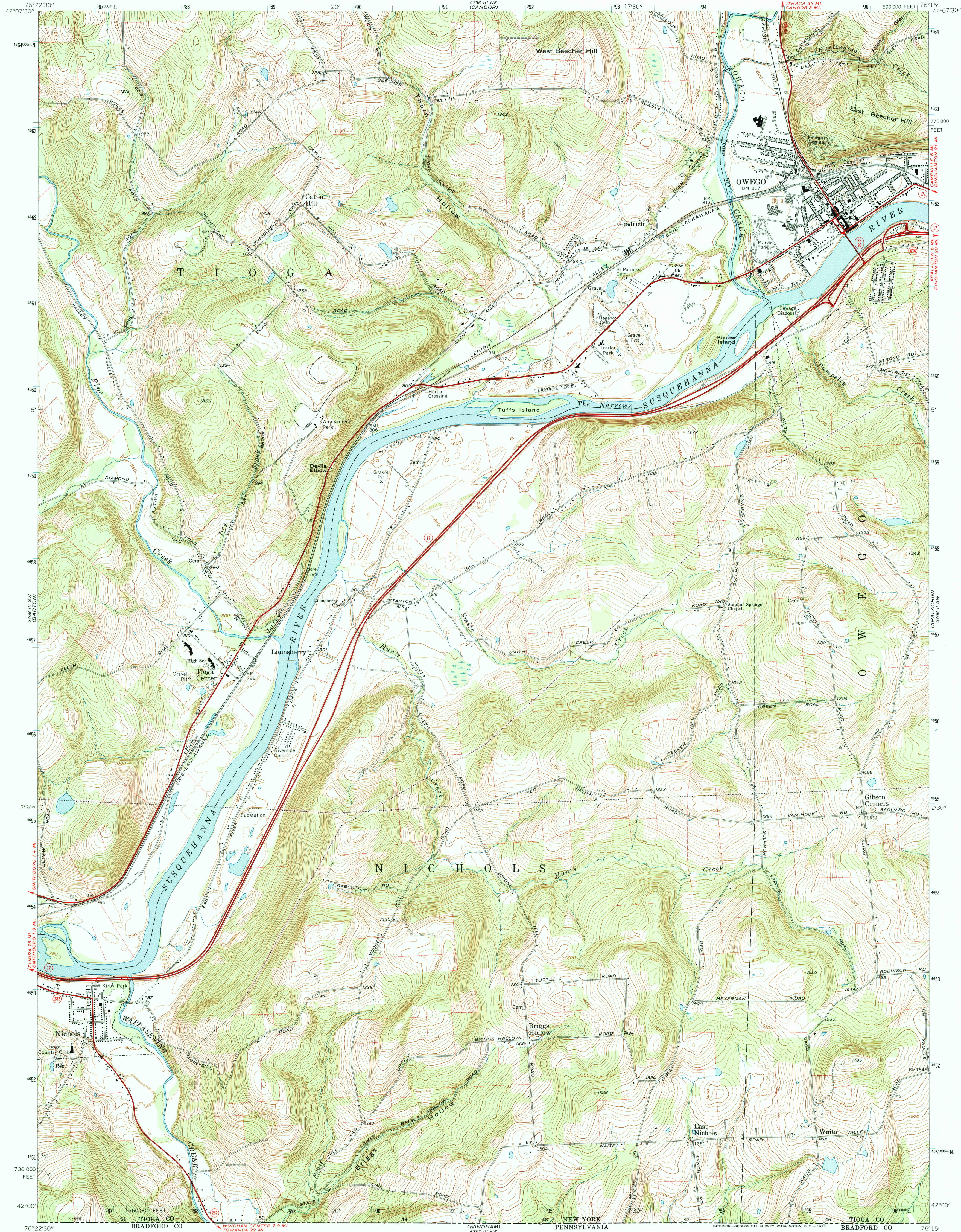


58° 11' N W
(SPENCER)

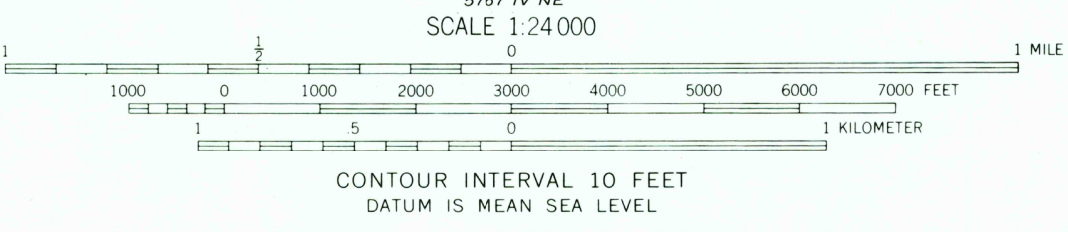
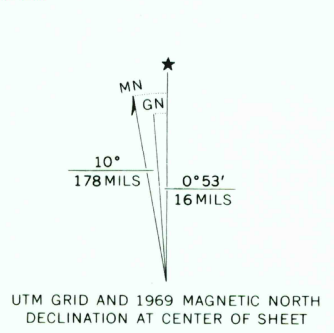
UNITED STATES
DEPARTMENT OF THE INTERIOR
GEOLOGICAL SURVEY

OWEGO QUADRANGLE
NEW YORK—TIOGA CO.
7.5 MINUTE SERIES (TOPOGRAPHIC)
SE/4 OWEGO 15' QUADRANGLE

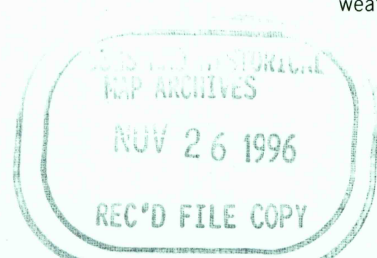
57° 11' N W
(NEWARK VALLEY)



Mapped, edited, and published by the Geological Survey
Revised in cooperation with New York Department of Transportation
Control by USGS and USC&GS
Topography by photogrammetric methods from aerial photographs
taken 1944 and 1948. Field checked 1956. Revised from aerial
photographs taken 1968. Field checked 1969
Polyconic projection. 1927 North American datum
10,000-foot grid based on New York coordinate system, central zone
1000-meter Universal Transverse Mercator grid ticks,
zone 18, shown in blue
Fine red dashed lines indicate selected fence and field lines where
generally visible on aerial photographs. This information is unchecked



ROAD CLASSIFICATION
Primary highway, all weather. Light-duty road, all weather,
hard surface
Unimproved road, fair or dry
weather
State Route



OWEGO, N. Y.
SE/4 OWEGO 15' QUADRANGLE
N4200—W7615/7.5
1969

THIS MAP COMPLIES WITH NATIONAL MAP ACCURACY STANDARDS
FOR SALE BY U. S. GEOLOGICAL SURVEY, WASHINGTON, D. C. 20242
A FOLDER DESCRIBING TOPOGRAPHIC MAPS AND SYMBOLS IS AVAILABLE ON REQUEST

