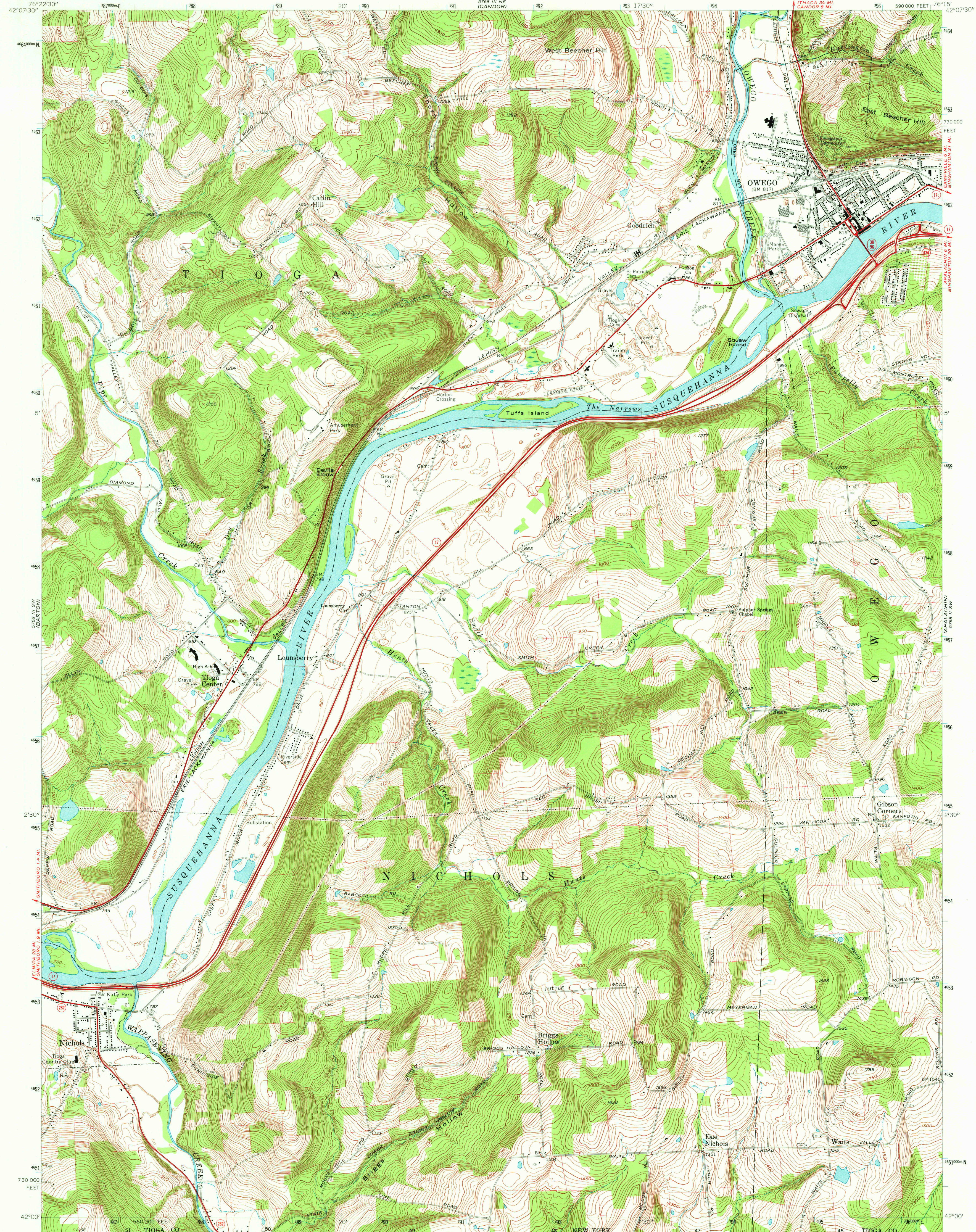


5768 III NW  
(SPENCER)

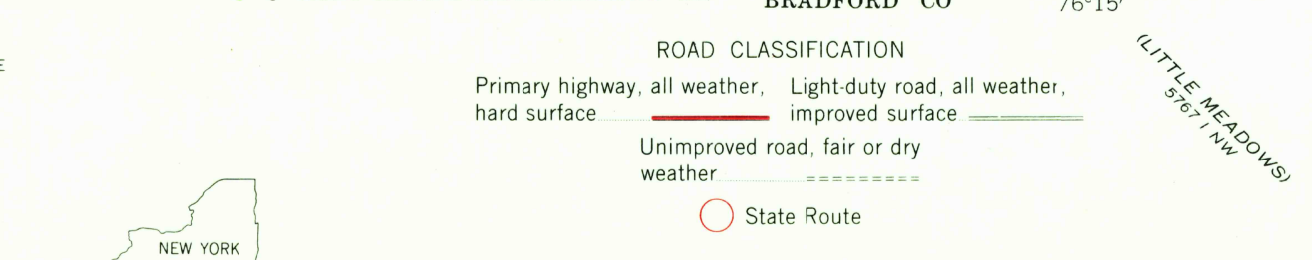
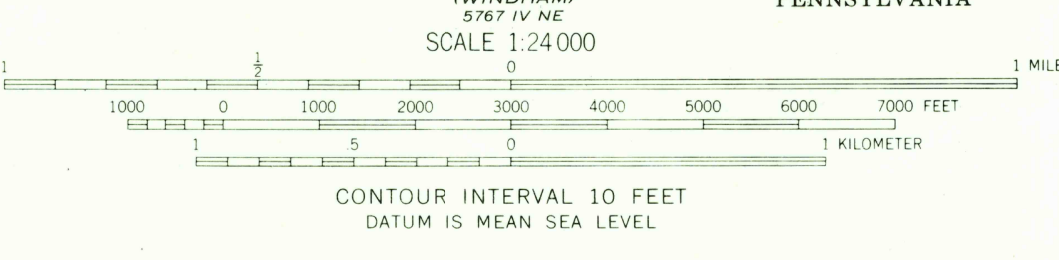
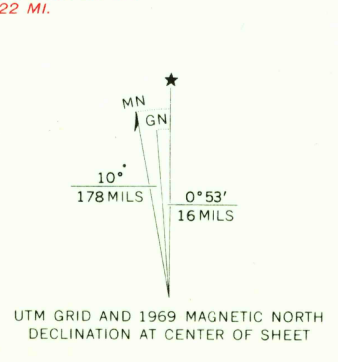
UNITED STATES  
DEPARTMENT OF THE INTERIOR  
GEOLOGICAL SURVEY

OWEGO QUADRANGLE  
NEW YORK-TIOGA CO.  
7.5 MINUTE SERIES (TOPOGRAPHIC)  
SE/4 OWEGO 15' QUADRANGLE

5768 II NW  
NEWARK VALLEY



Mapped, edited, and published by the Geological Survey  
Revised in cooperation with New York Department of Transportation  
Control by USGS and USC&GS  
Topography by photogrammetric methods from aerial photographs  
taken 1944 and 1948. Field checked 1956. Revised from aerial  
photographs taken 1968. Field checked 1969  
Polyconic projection. 1927 North American datum  
10,000-foot grid based on New York coordinate system, central zone  
1000-meter Universal Transverse Mercator grid ticks,  
zone 18, shown in blue  
Fine red dashed lines indicate selected fence and field lines where  
generally visible on aerial photographs. This information is unchecked



THIS MAP COMPLIES WITH NATIONAL MAP ACCURACY STANDARDS  
FOR SALE BY U. S. GEOLOGICAL SURVEY, WASHINGTON, D. C. 20542  
A FOLDER DESCRIBING TOPOGRAPHIC MAPS AND SYMBOLS IS AVAILABLE ON REQUEST

USGS  
HISTORICAL FILE  
TOPOGRAPHIC DIVISION

OWEGO, N. Y.  
SE/4 OWEGO 15' QUADRANGLE  
N4200-W7615/7.5  
1969

AMS 5768 III SE-SERIES 8721

2860  
NOV 5 1971