

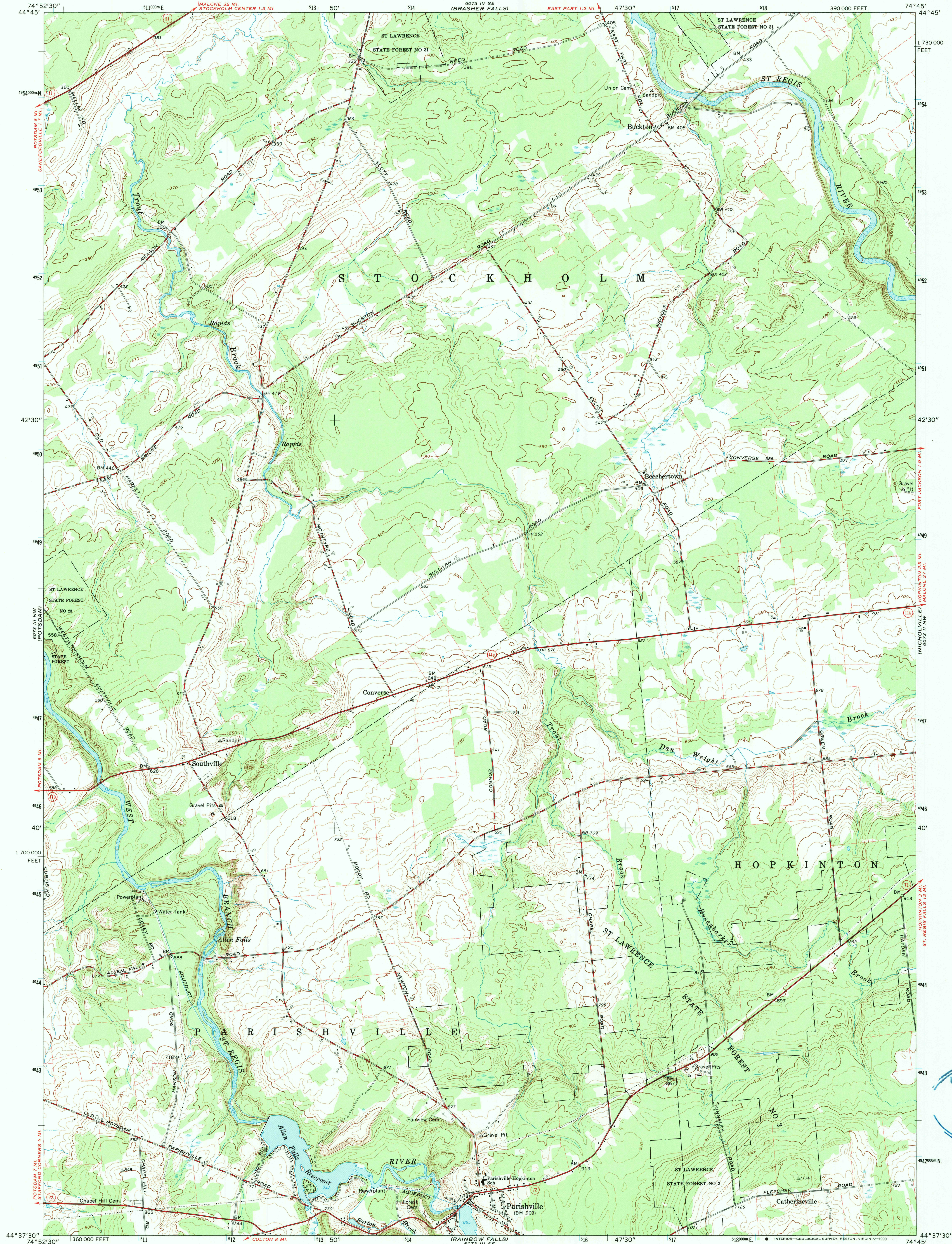
6073 I IV SW  
NORFOLK

UNITED STATES  
DEPARTMENT OF THE INTERIOR  
GEOLOGICAL SURVEY

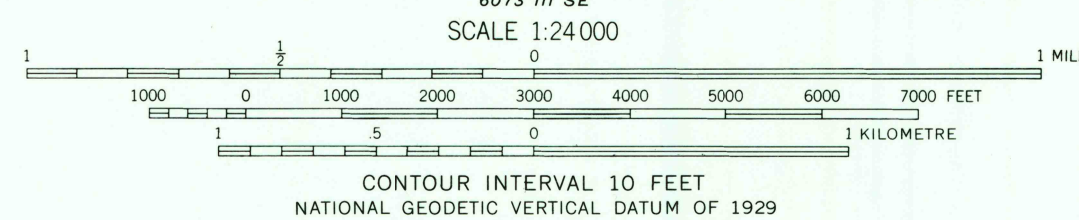
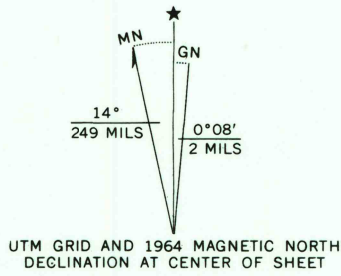
STATE OF NEW YORK  
DEPARTMENT OF PUBLIC WORKS

PARISHVILLE QUADRANGLE  
NEW YORK-ST. LAWRENCE CO.  
7.5 MINUTE SERIES (TOPOGRAPHIC)

6073 I SW  
NORTH LAWRENCE



Mapped, edited, and published by the Geological Survey  
Control by USGS and USC&GS  
Topography by photogrammetric methods from aerial  
photographs taken 1963. Field checked 1964  
Polyconic projection. 1927 North American datum  
10,000-foot grid based on New York coordinate system, east zone  
1000-metre Universal Transverse Mercator grid ticks,  
zone 18, shown in blue  
Fine red dashed lines indicate selected fence and field lines where  
generally visible on aerial photographs  
This information is unchecked  
Supersedes Army Map Service map dated 1943



ROAD CLASSIFICATION  
Heavy-duty ——— Light-duty ———  
Medium-duty ——— Unimproved dirt ———  
U.S. Route ——— State Route ———

PARISHVILLE, N. Y.

N4437.5—W7445/7.5  
PHOTOINSPECTED 1980  
1964

THIS MAP COMPLIES WITH NATIONAL MAP ACCURACY STANDARDS  
FOR SALE BY U.S. GEOLOGICAL SURVEY  
DENVER, COLORADO 80225, OR RESTON, VIRGINIA 22092  
A FOLDER DESCRIBING TOPOGRAPHIC MAPS AND SYMBOLS IS AVAILABLE ON REQUEST

Map photoinspected 1980  
No major culture or drainage changes observed

AMS 6073 III NE—SERIES V821

USGS NMD HISTORICAL MAP  
MAY 13 1991  
REC'D FILE COPY