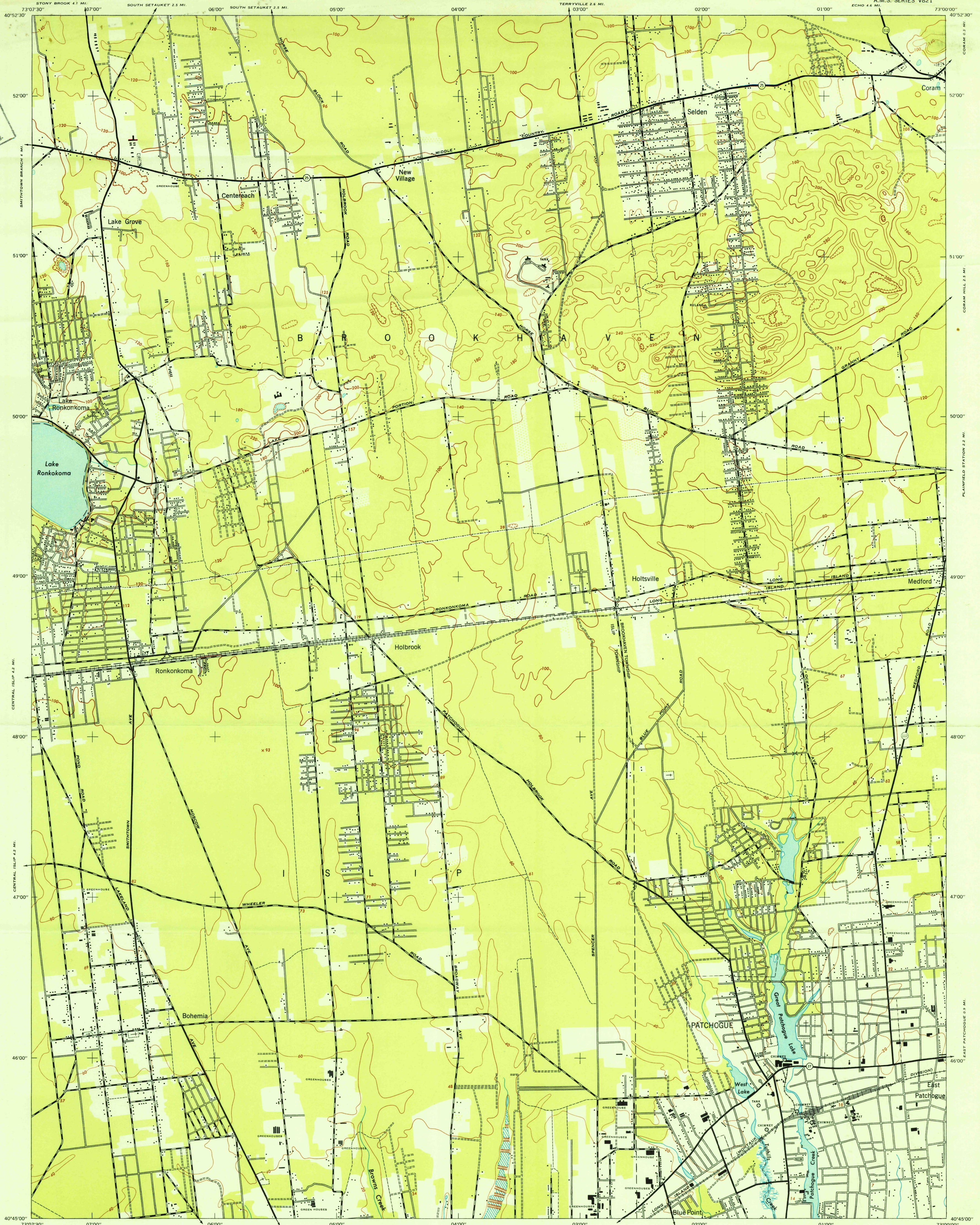
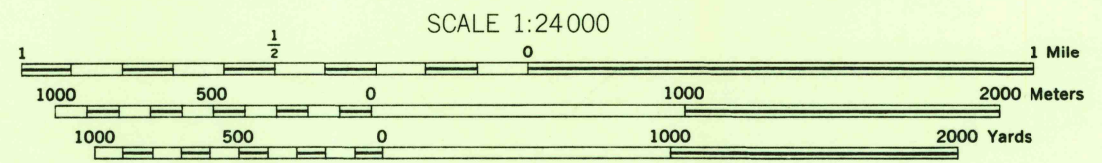


U.S.G.S.  
FILE COPY  
Inspection and Editing



First Edition (AMS 1), 1944; (AMS 2), 1947.  
Prepared under the direction of the Chief of Engineers by the Army Map Service (AM), War Department, Washington, D. C. Marginal data revised and Universal Transverse Mercator Grid added, 1947. Copied in 1947 from New York, 1:25,000, AMS, Patchogue, 1944. Original map compiled by the Army Map Service by stereophotogrammetric methods. Horizontal and vertical control by USCG&S, USGS, U. S. Engineer Department and AMS.

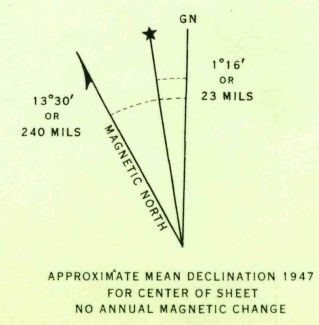


CONTOUR INTERVAL 20 FEET  
DATUM IS MEAN SEA LEVEL  
TRANSVERSE MERCATOR PROJECTION  
1927 NORTH AMERICAN DATUM

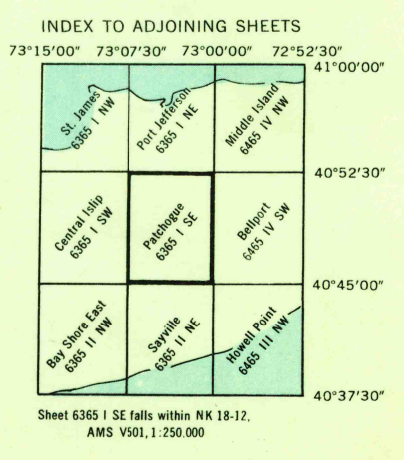
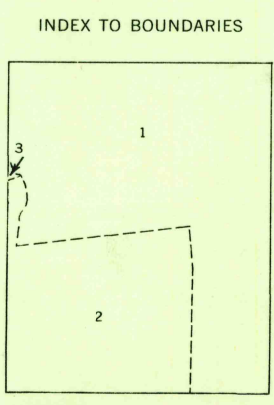
- LEGEND**  
ROAD DATA 1943
- |   |   |
|---|---|
| Hard surface, heavy duty road, more than two lanes wide                       | Loose surface, graded, dry weather road |
| Hard surface, heavy duty road, two lanes wide; Federal route marker           | Trail; Dirt road                        |
| Secondary, hard surface, all weather road, two lanes wide; State route marker | Railroad in street; Carline in street   |
|   | UNDER CONSTRUCTION                      |
| RAILROADS   | ABANDONED                               |
| Standard gauge  | Single track                            |
| Narrow gauge  | Double track                            |
| Single track carline  | Single track                            |
| BOUNDARIES  | Double track                            |
| International   | Double track carline                    |
| State   | Mine                                    |
| County (with monument)  | Intermittent lake                       |
| Town  | Intermittent stream                     |
| Reservation   | Bench mark                              |
| Military reservation  | Spot elevation, feet                    |
| School; Church  | Dam                                     |
| Cemetery  | Rapids; Falls                           |
|   | Large rapids and falls                  |
|   | Woods                                   |
|   | Woods/brushwood                         |
|   | Brushwood                               |
|   | Swamp, marsh                            |
|   | Rocks awash at low tide                 |
|   | Orchard                                 |
|   | Wharf, pier                             |

REPRINTED FROM MILITARY EDITION FOR CIVIL USE 1950  
SOLD AND DISTRIBUTED BY U. S. GEOLOGICAL SURVEY, WASHINGTON 25, D. C.

USGS  
Historical File  
Topographic Division



U.S.G.S.  
FILE COPY  
Inspection and Editing



PATCHOGUE, NEW YORK  
SUFFOLK COUNTY

2-24-50  
3220