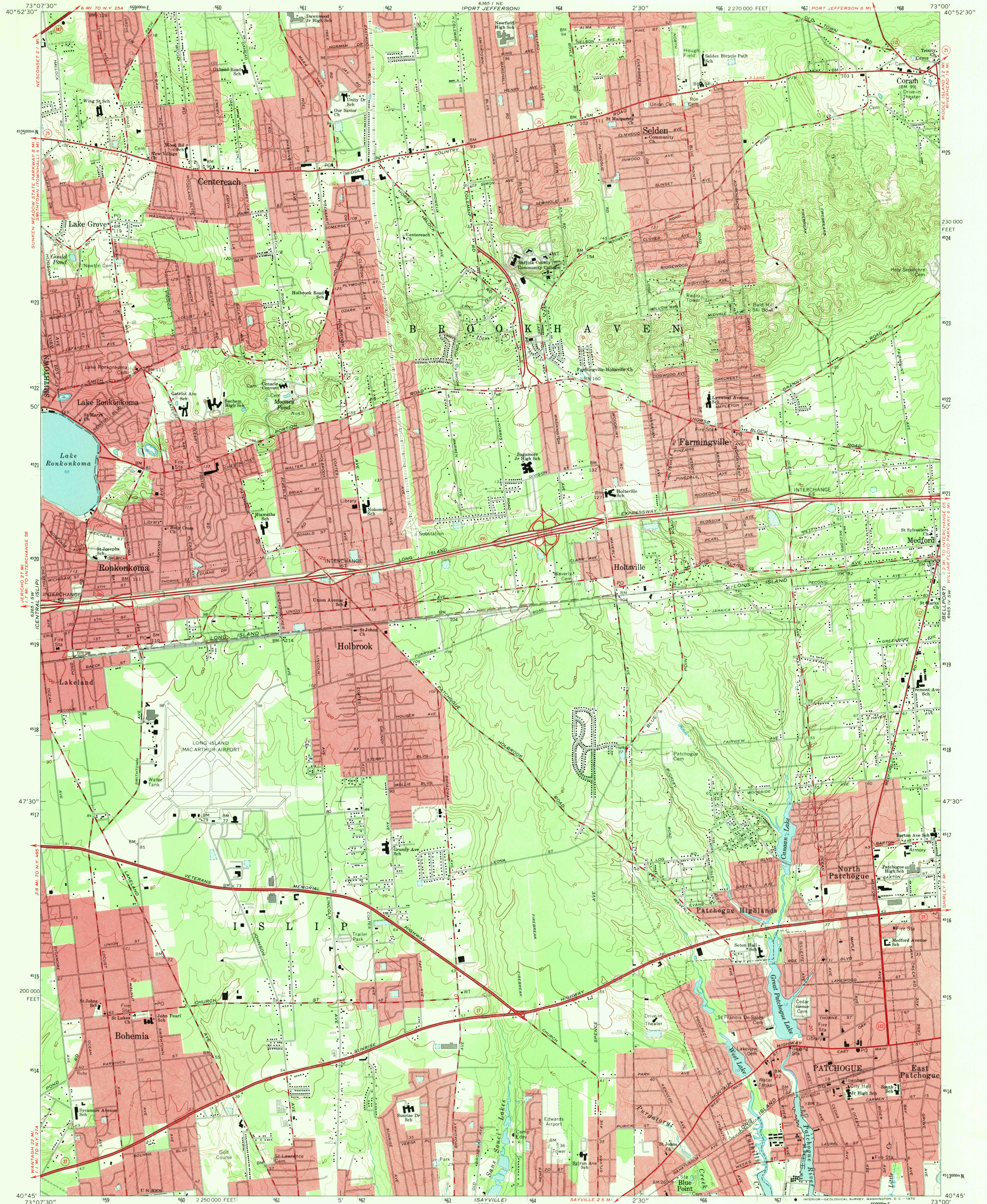


UNITED STATES  
DEPARTMENT OF THE INTERIOR  
GEOLOGICAL SURVEY

PATCHOGUE QUADRANGLE  
NEW YORK-SUFFOLK CO.  
7.5 MINUTE SERIES (TOPOGRAPHIC)  
SE/4 SETAUKET 15' QUADRANGLE



Maped, edited, and published by the Geological Survey  
Revised in cooperation with New York Department of Transportation  
Control by USGS and USCGS  
Topography by photogrammetric methods from aerial photographs  
taken 1954 and planetary surveys 1956. Revised from  
aerial photographs taken 1966. Field checked 1967  
Polyconic projection. 1927 North American datum  
10,000-foot grid based on New York coordinate system,  
Long Island zone  
1000-meter Universal Transverse Mercator grid ticks,  
zone 18, shown in blue  
Red tint indicates areas in which only landmark buildings are shown

SCALE 1:24,000  
CONTOUR INTERVAL 10 FEET  
DOTTED LINES REPRESENT 5-FOOT CONTOURS  
DATUM IS MEAN SEA LEVEL

USGS  
Historical File  
Topographic Division

ROAD CLASSIFICATION  
Heavy-duty ——— Light-duty ———  
Medium-duty ——— Unimproved dirt ———  
State Route



U.S.G.S.  
FILE COPY  
TOPOGRAPHIC DIVISION

PATCHOGUE, N. Y.  
SE/4 SETAUKET 15' QUADRANGLE  
N4045-W7300/7.5  
1967  
AMS 6365 1 SE-SERIES V821

3250  
JUN 11 1970