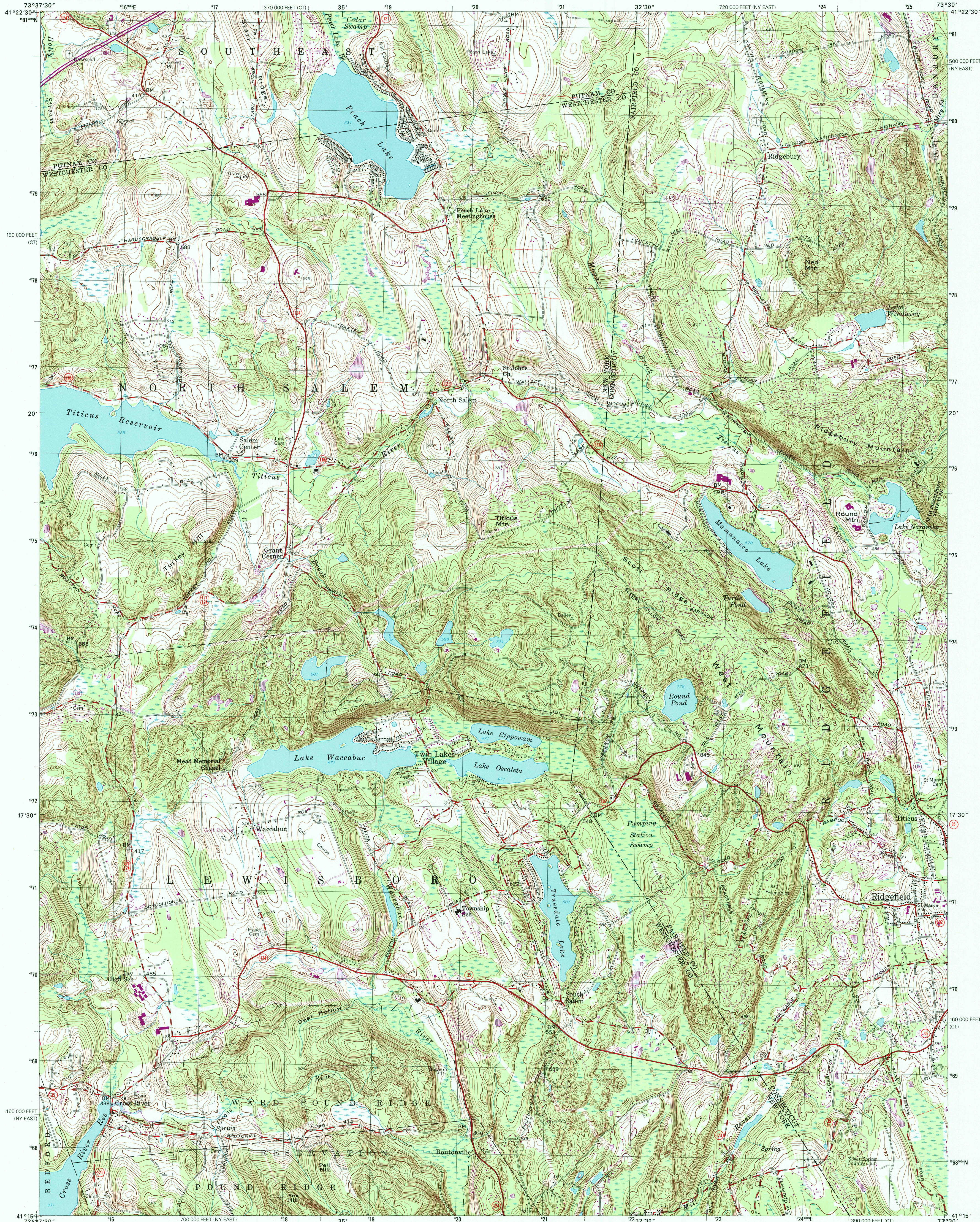




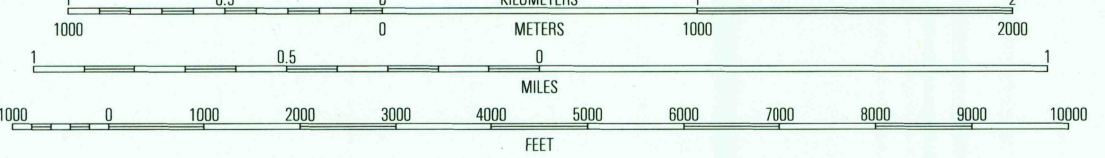
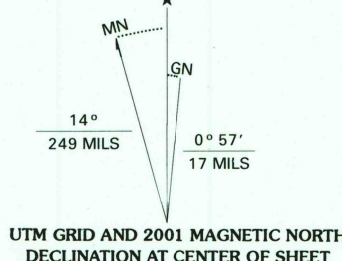
U.S. DEPARTMENT OF THE INTERIOR  
U.S. GEOLOGICAL SURVEY

STATE OF CONNECTICUT  
DEPARTMENT OF ENVIRONMENTAL PROTECTION  
NATURAL RESOURCES CENTER

PEACH LAKE QUADRANGLE  
NEW YORK-CONNECTICUT  
7.5-MINUTE SERIES (TOPOGRAPHIC)



Produced by the United States Geological Survey  
Topography compiled 1941. Planimetry derived from imagery taken 1982 and other sources. Photomaps using imagery dated 1998; no major culture or drainage changes observed. Survey control current as of 1943. Boundaries revised 2000  
North American Datum of 1927 (NAD 27)  
Projection: New York coordinate system, east zone (transverse Mercator)  
10 000-foot ticks: New York coordinate system, east zone and Connecticut coordinate system  
1000-meter Universal Transverse Mercator grid, zone 18  
North American Datum of 1983 (NAD 83) is shown by dashed corner ticks. The values of the shift between NAD 27 and NAD 83 for 7.5-minute intersections are obtainable from National Geodetic Survey NADCON software  
There may be private inholdings within the boundaries of the National or State reserves shown on this map  
Information shown in purple may not meet USGS content standards and may conflict with previously mapped contours



CONTOUR INTERVAL 10 FEET  
NATIONAL GEODETIC VERTICAL DATUM OF 1929  
TO CONVERT FROM FEET TO METERS, MULTIPLY BY 0.3048  
THIS MAP COMPLIES WITH NATIONAL MAP ACCURACY STANDARDS  
FOR SALE BY U.S. GEOLOGICAL SURVEY, P.O. BOX 25286, DENVER, COLORADO 80225  
A FOLDER DESCRIBING TOPOGRAPHIC MAPS AND SYMBOLS IS AVAILABLE ON REQUEST



ROAD CLASSIFICATION  
Primary highway  
hard surface .....  
Secondary highway  
hard surface .....  
Light-duty road, hard or  
improved surface .....  
Unimproved road .....  
Interstate Route  
U.S. Route  
State Route

1	2	3
4	5	6
7	8	9

1 Lake Carmel  
2 Brewster  
3 Danbury  
4 Croton Falls  
5 Bethel  
6 Mount Kisco  
7 Pound Ridge  
8 Norwalk North

PEACH LAKE, NY-CT  
1998  
NIMA 6266 I SE-SERIES V821

HISTORICAL MAP ARCHIVES  
USGS NHD  
APR 3 0 2001

RECEIVED  
APR 3 0 2001

