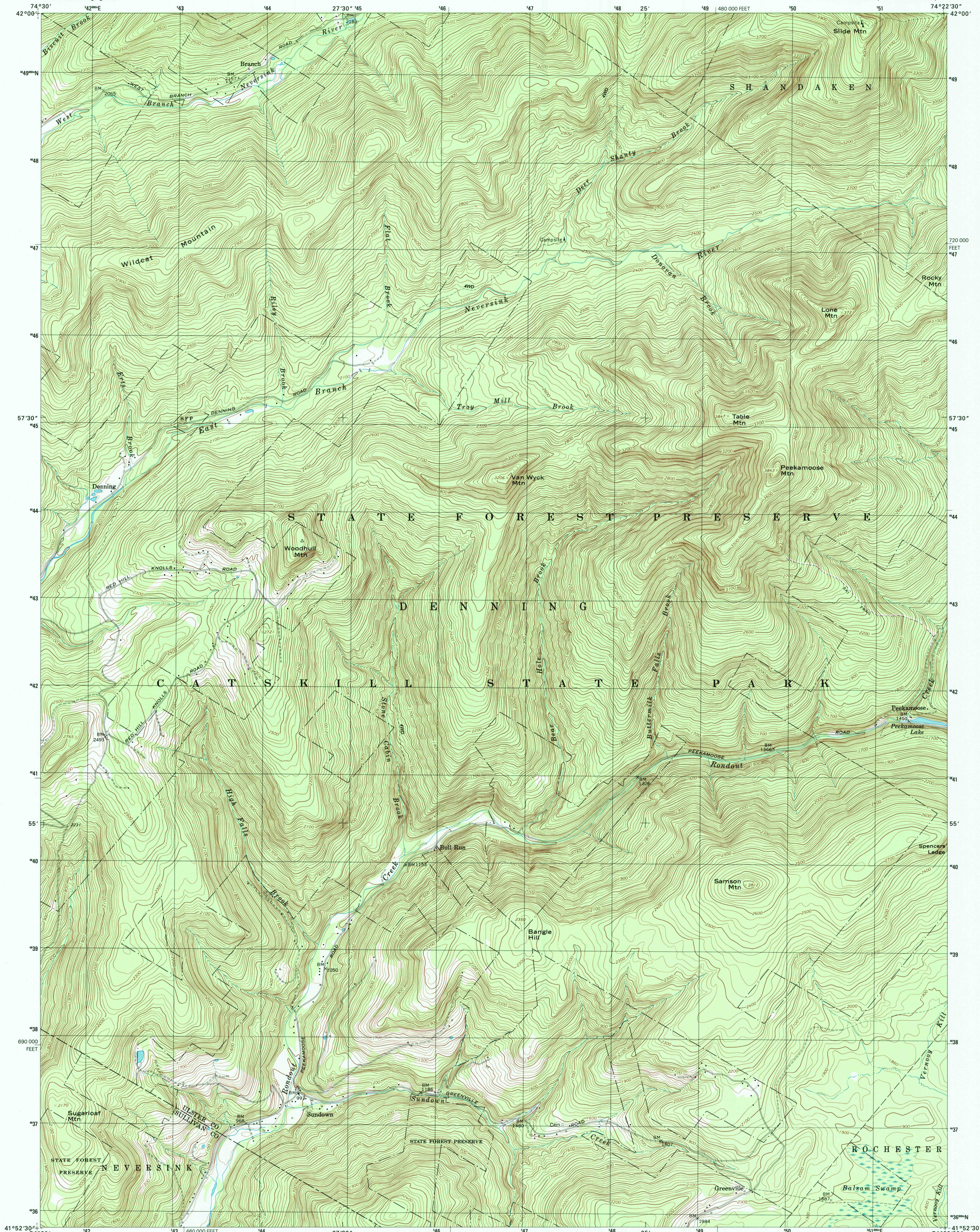


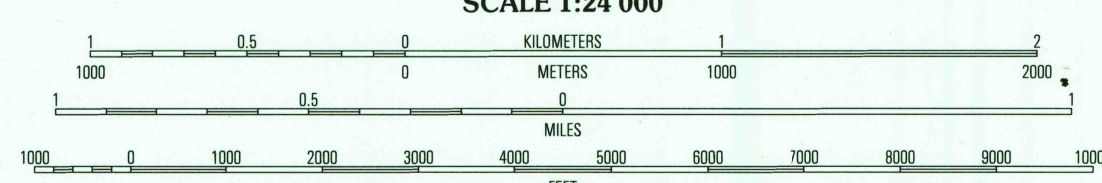
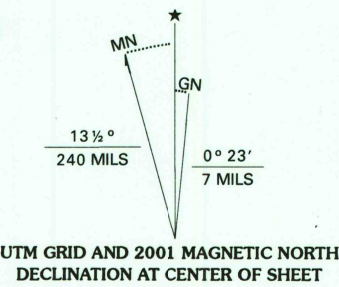


U.S. DEPARTMENT OF THE INTERIOR  
U.S. GEOLOGICAL SURVEY

PEEKAMOOSE MTN QUADRANGLE  
NEW YORK  
7.5-MINUTE SERIES (TOPOGRAPHIC)



Produced by the United States Geological Survey  
Derived from imagery taken 1968 and other sources. Photosinspected using imagery taken 1997; no major culture or drainage changes observed. Survey control current as of 1969  
Boundaries verified 2000  
North American Datum of 1927 (NAD 27). Projection and 10 000-foot ticks: New York coordinate system, east zone (transverse Mercator)  
1000-meter Universal Transverse Mercator grid, zone 18  
North American Datum of 1983 (NAD 83) is shown by dashed corner ticks. The values of the shift between NAD 27 and NAD 83 for 7.5-minute intersections are obtainable from National Geodetic Survey NADCON software  
There may be private inholdings within the boundaries of the National or State reservations shown on this map



CONTOUR INTERVAL 20 FEET  
NATIONAL GEODETIC VERTICAL DATUM OF 1929  
TO CONVERT FROM FEET TO METERS, MULTIPLY BY 0.3048



1	2	3
4	5	6
7	8	9

1 Seager  
2 Shandaken  
3 Phoenicia  
4 Claryville  
5 West Shakan  
6 Grahamsville  
7 Rondout Reservoir  
8 Kerhonkson

ROAD CLASSIFICATION  
Primary highway  
hard surface .....  
Secondary highway  
hard surface .....  
Light-duty road, hard or  
improved surface .....  
Unimproved road .....  
Interstate Route  
U.S. Route  
State Route

PEEKAMOOSE MTN, NY  
1997  
NIMA 6167 IV NW-SERIES V821

HISTORICAL MAP ARCHIVES

RECEIVED  
APR 30 2001



FOR SALE BY U.S. GEOLOGICAL SURVEY, P.O. BOX 25286, DENVER, COLORADO 80225  
A FOLDER DESCRIBING TOPOGRAPHIC MAPS AND SYMBOLS IS AVAILABLE ON REQUEST