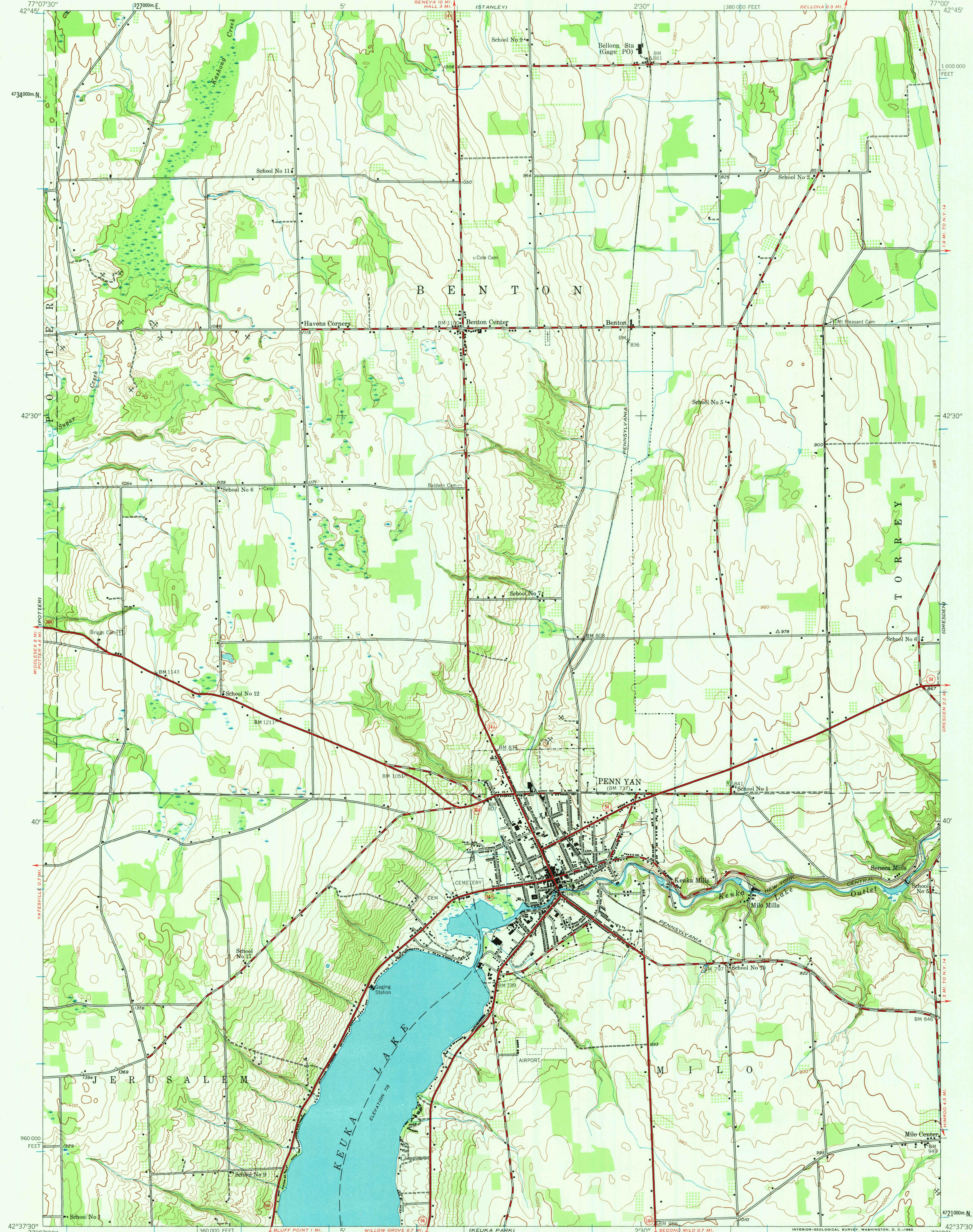


UNITED STATES  
DEPARTMENT OF THE INTERIOR  
GEOLOGICAL SURVEY

UNITED STATES  
DEPARTMENT OF THE ARMY  
CORPS OF ENGINEERS

PENN YAN QUADRANGLE  
NEW YORK-YATES CO.  
7.5 MINUTE SERIES (TOPOGRAPHIC)  
NE/4 PENN YAN 15' QUADRANGLE



Mapped by the Army Map Service  
Published for civil use by the Geological Survey  
Control by USGS, USC&GS, and TVA  
Topography from aerial photographs by photogrammetric methods  
Aerial photographs taken 1942. Field check 1942  
Polyconic projection. 1927 North American datum  
10,000-foot grid based on New York coordinate system, central zone  
1000-meter Universal Transverse Mercator grid ticks,  
zone 18, shown in blue

95°  
TRUE NORTH  
MAGNETIC NORTH  
APPROXIMATE MEAN  
DECLINATION, 1942

SCALE 1:24,000  
1 2 3 4 5 6 7 8 9 10 11 12 13 14 15 16 17 18 19 20 21 22 23 24 25 26 27 28 29 30 31 32 33 34 35 36 37 38 39 40 41 42 43 44 45 46 47 48 49 50 51 52 53 54 55 56 57 58 59 60 61 62 63 64 65 66 67 68 69 70 71 72 73 74 75 76 77 78 79 80 81 82 83 84 85 86 87 88 89 90 91 92 93 94 95 96 97 98 99 100  
CONTOUR INTERVAL 20 FEET  
DATUM IS MEAN SEA LEVEL



ROAD CLASSIFICATION  
Heavy-duty ——— Light-duty ———  
Medium-duty ——— Unimproved dirt ———  
State Route ○  
JUL 20 1973  
PENN YAN, N. Y.  
NE/4 PENN YAN 15' QUADRANGLE  
N4237.5-W7700/7.5  
1942

FOR SALE BY U. S. GEOLOGICAL SURVEY, WASHINGTON 25, D. C.  
A FOLDER DESCRIBING TOPOGRAPHIC MAPS AND SYMBOLS IS AVAILABLE ON REQUEST