

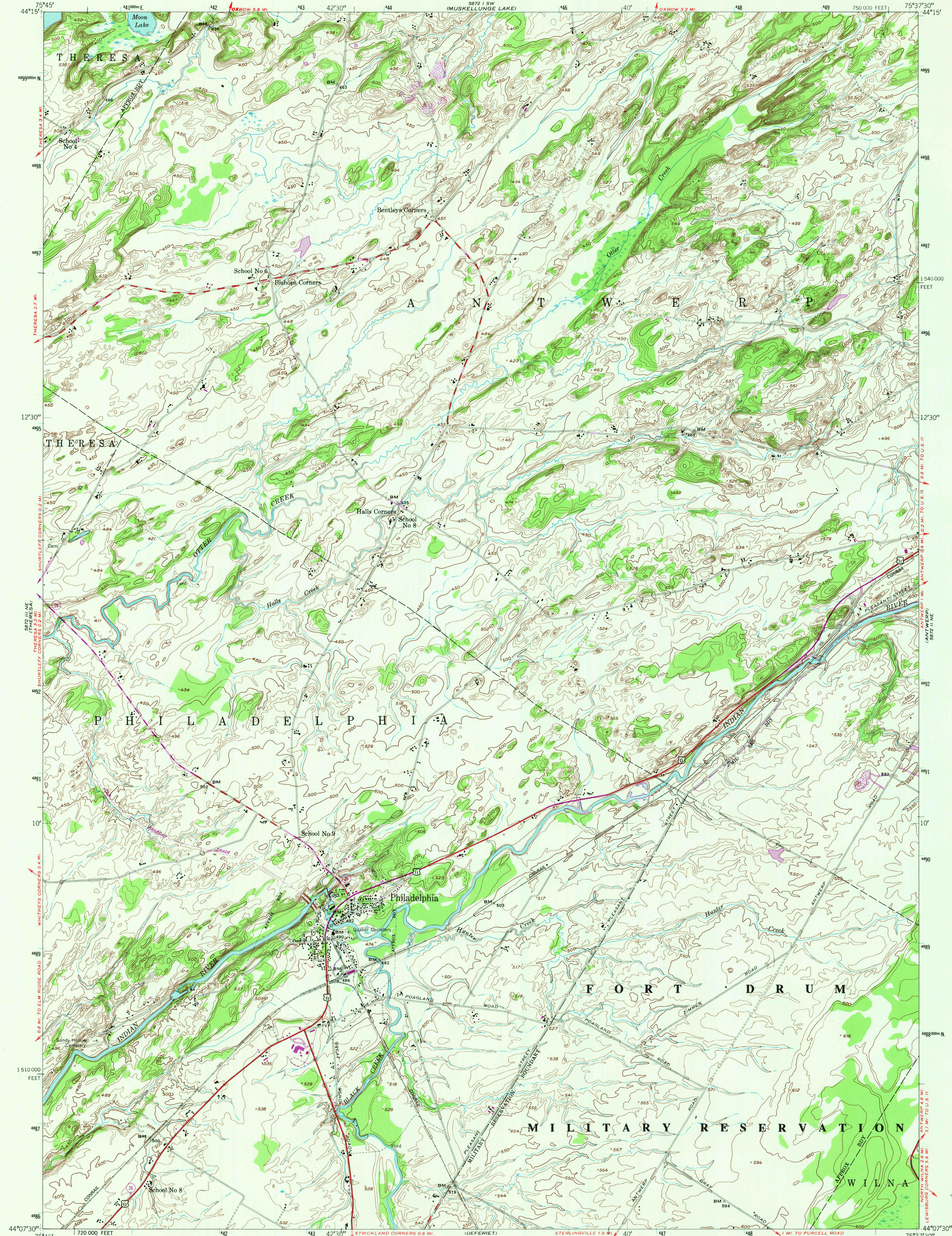
5872 I SE
(RED WOOD)

UNITED STATES
DEPARTMENT OF THE INTERIOR
GEOLOGICAL SURVEY

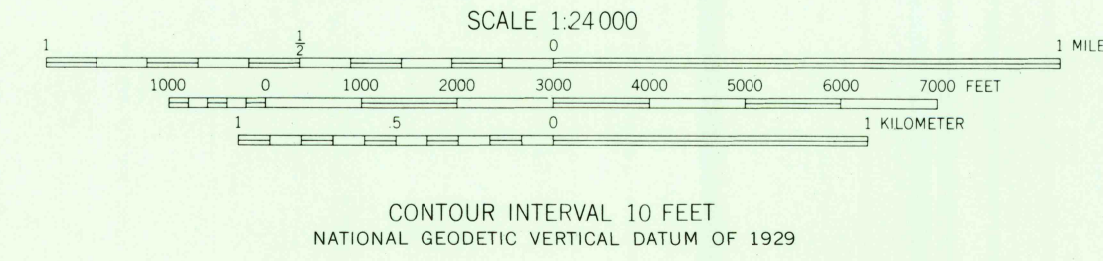
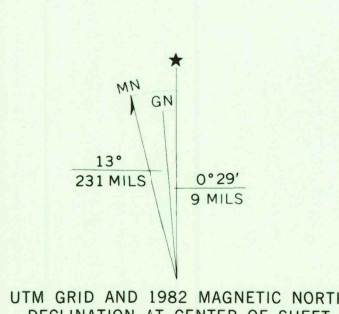
UNITED STATES
DEPARTMENT OF THE ARMY
CORPS OF ENGINEERS

PHILADELPHIA QUADRANGLE
NEW YORK-JEFFERSON CO.
7.5 MINUTE SERIES (TOPOGRAPHIC)
NW/4 ANTWERP 15' QUADRANGLE

5872 I SE
(NATURAL DAM)



Mapped by the Defense Mapping Agency
Edited and published by the Geological Survey
Control by NOS/NOAA, USGS, Tennessee Valley Authority,
and USCE
Topography by photogrammetric methods from aerial photographs
taken 1947. Field checked 1949
Polyconic projection. 10,000-foot grid ticks based on New York
coordinate system, central zone. 1000-meter Universal Transverse
Mercator grid ticks, zone 18, shown in blue. 1927 North
American Datum. To place on the predicted North American
Datum 1983 move the projection lines 2 meters south and
27 meters west as shown by dashed corner ticks
No distinction is made between dwellings, barns,
commercial and industrial buildings
There may be private inholdings within the boundaries of
the National or State reservations shown on this map



THIS MAP COMPLIES WITH NATIONAL MAP ACCURACY STANDARDS
FOR SALE BY U. S. GEOLOGICAL SURVEY, RESTON, VIRGINIA 22092
A FOLDER DESCRIBING TOPOGRAPHIC MAPS AND SYMBOLS IS AVAILABLE ON REQUEST

Revisions shown in purple and woodland compiled by the Geological
Survey from aerial photographs taken 1981 and other sources. This
information not field checked. Map edited 1982

ROAD CLASSIFICATION
Heavy-duty... 4 LANE 6 LANE Light-duty...
Medium-duty... 4 LANE 6 LANE Unimproved dirt...
U. S. Route... State Route...

PHILADELPHIA, N. Y.
NW/4 ANTWERP 15' QUADRANGLE
N4407.5-W7537.5/7.5
1949
PHOTOREVISED 1982
DMA 5872 II NW-SERIES V821

RETURN TO:
USGS AND HISTORICAL MAP ARCHIVES
JUN 27 1983

3000