

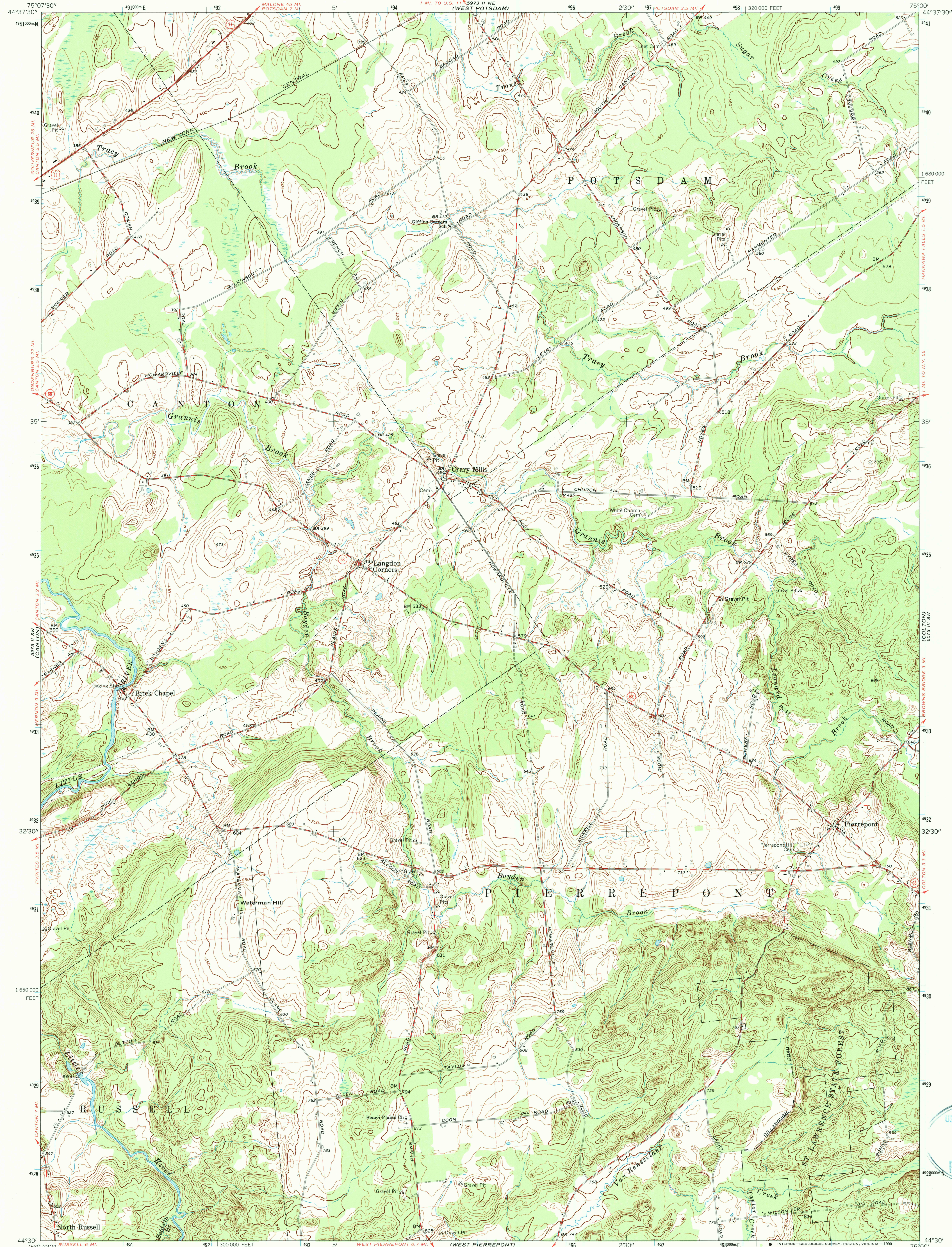
5973 I NW
(MOORE)

UNITED STATES
DEPARTMENT OF THE INTERIOR
GEOLOGICAL SURVEY

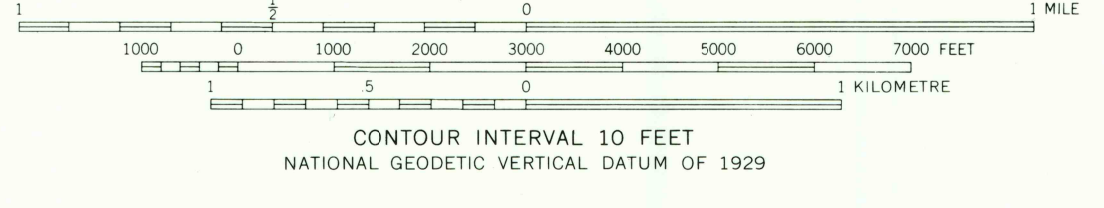
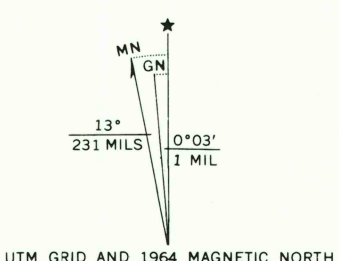
STATE OF NEW YORK
DEPARTMENT OF PUBLIC WORKS

PIERREPONT QUADRANGLE
NEW YORK-ST. LAWRENCE CO.
7.5 MINUTE SERIES (TOPOGRAPHIC)

5973 I NW
(POTSDAM)



Mapped, edited, and published by the Geological Survey
Control by USGS and USC&GS
Topography by photogrammetric methods from aerial
photographs taken 1963. Field checked 1964
Polyconic projection. 1927 North American datum
10,000-foot grid based on New York coordinate system, east zone
1000-metre Universal Transverse Mercator grid ticks,
zone 18, shown in blue
Fine red dashed lines indicate selected fence and field lines where
generally visible on aerial photographs. This information is unchecked
Map photosinspected 1980
No major culture or drainage changes observed



ROAD CLASSIFICATION

Heavy-duty	Light-duty
Medium-duty	Unimproved dirt
U.S. Route	State Route

THIS MAP COMPLIES WITH NATIONAL MAP ACCURACY STANDARDS
FOR SALE BY U.S. GEOLOGICAL SURVEY
DENVER, COLORADO 80225, OR RESTON, VIRGINIA 22092
A FOLDER DESCRIBING TOPOGRAPHIC MAPS AND SYMBOLS IS AVAILABLE ON REQUEST

PIERREPONT, N. Y.
N4430—W7500/7.5
1964
PHOTOINSPECTED 1980
AMS 5973 II SE—SERIES V821

USGS NMD HISTORICAL MAP
SEP 10 1990
REC'D FILE COPY

ALBERT MARSH
609 I NW