

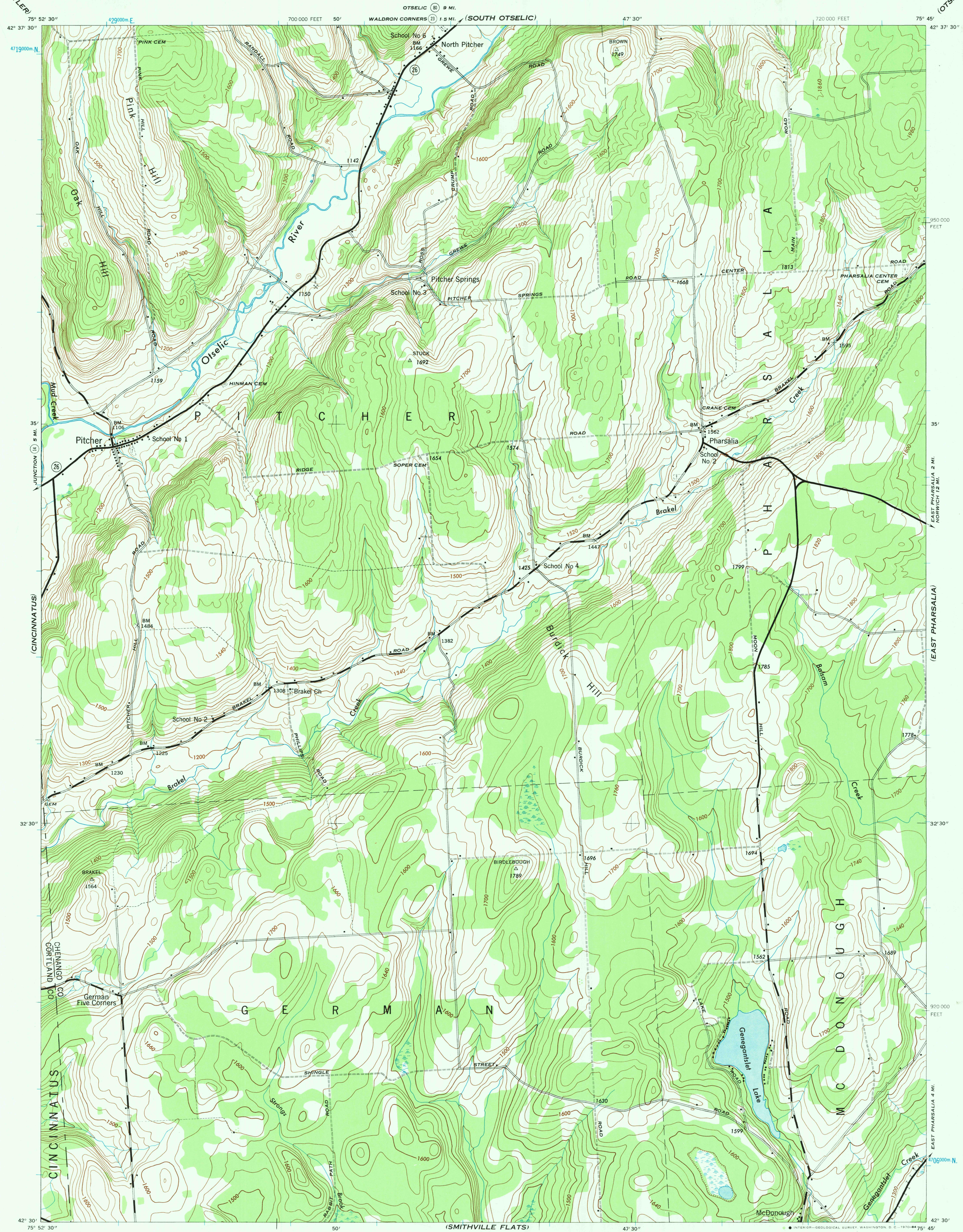
(CUYLER)

NEW YORK

WAR DEPARTMENT  
CORPS OF ENGINEERS

PITCHER QUADRANGLE  
7.5 MINUTE SERIES

(OTSELIC)



Mapped by Tennessee Valley Authority under direction of the  
Chief of Engineers, U. S. Army, 1943.  
Control by USC&GS, USGS, USED, and TVA.  
Topography by U. S. Geological Survey and Tennessee Valley Authority  
by Stereophotogrammetric methods (Multiplex).  
Field completion surveys by TVA.  
Wide-angle photography for TVA, 1942.  
Polyconic projection. 1927 North American Datum.

ROAD CLASSIFICATION  
1943  
Dependable hard surface,  
heavy-duty road. ———— Loose surface graded,  
dry weather road. ———— U. S. Route 20  
Secondary, hard-surface,  
all-weather road. ———— Dirt road. ———— State Route 7  
More than two lanes indicated by note along road with tick at point of change. 3 LANE 4 LANE

THIS MAP COMPLIES WITH THE NATIONAL STANDARD MAP ACCURACY REQUIREMENTS.

Scale 1:24,000  
1 0 1 Mile  
1000 500 0 1000 2000 Yards

CONTOUR INTERVAL 20 FEET  
DATUM IS MEAN SEA LEVEL

REPRINTED FROM MILITARY EDITION FOR CIVIL USE  
ONE THOUSAND METER UNIVERSAL TRANSVERSE MERCATOR GRID TICKS ZONE 18, SHOWN IN BLUE  
TEN THOUSAND FOOT GRID BASED ON NEW YORK PLANE COORDINATE SYSTEM, CENTRAL ZONE

FOR SALE BY U. S. GEOLOGICAL SURVEY, WASHINGTON, D. C. 20242  
A FOLDER DESCRIBING TOPOGRAPHIC MAPS AND SYMBOLS IS AVAILABLE ON REQUEST

11°  
TRUE NORTH  
APPROXIMATE MEAN  
DECLINATION, 1943

PITCHER, N. Y.  
N4230-W7545/7.5

1943

(TYNER)  
RETURN TO:  
USGS AND DISTRICT MAP AGENTS