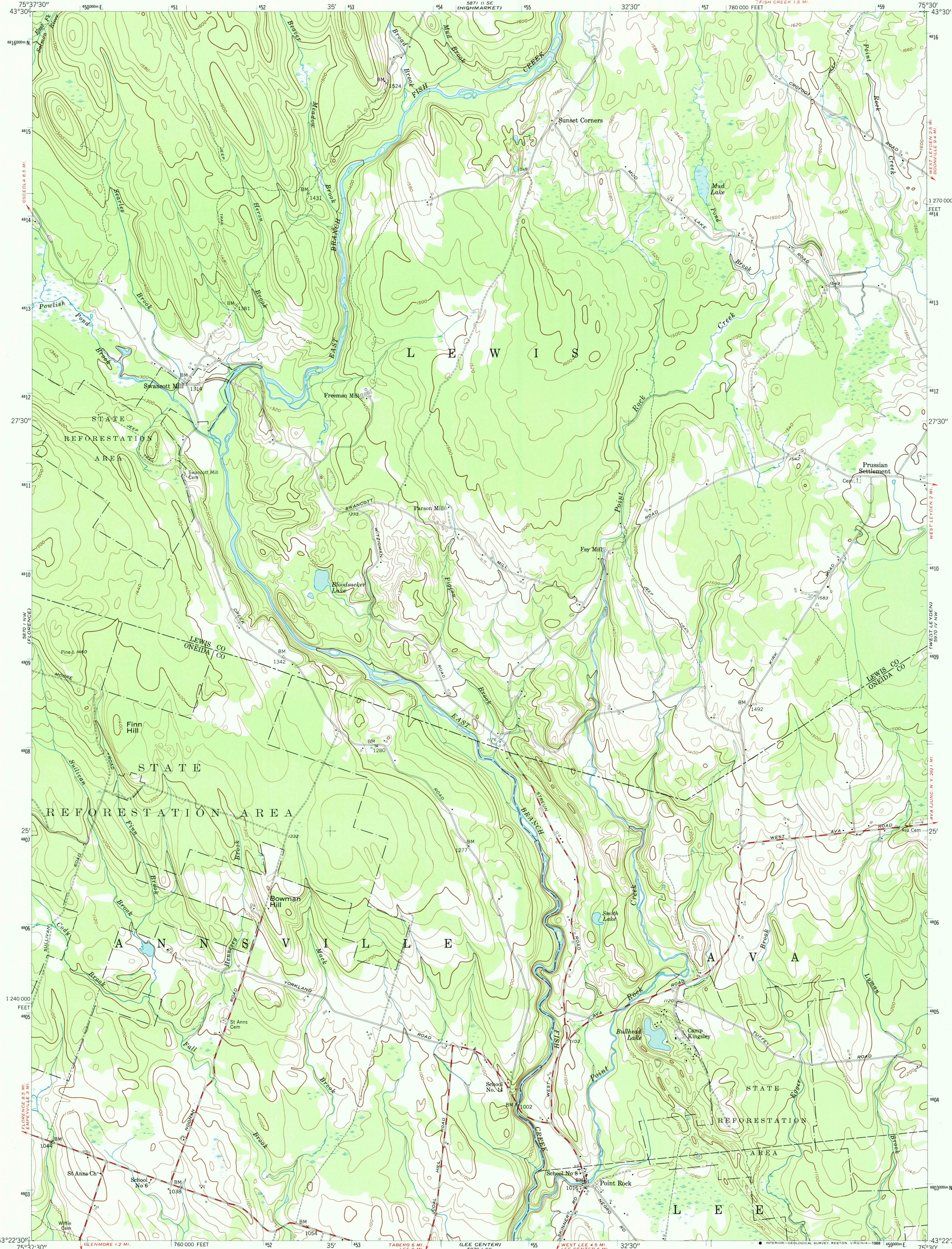


UNITED STATES  
DEPARTMENT OF THE INTERIOR  
GEOLOGICAL SURVEY

UNITED STATES  
DEPARTMENT OF THE ARMY  
CORPS OF ENGINEERS

POINT ROCK QUADRANGLE  
NEW YORK  
7.5 MINUTE SERIES (TOPOGRAPHIC)



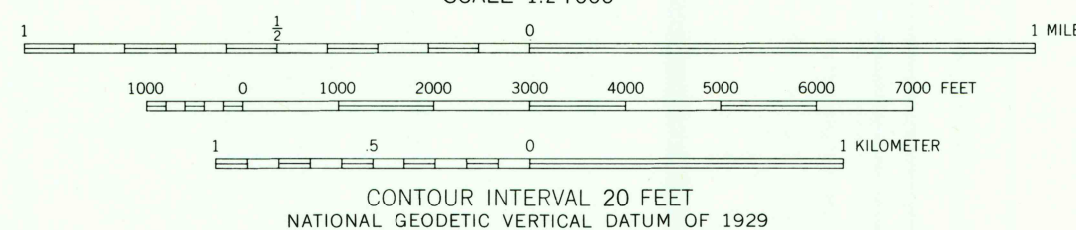
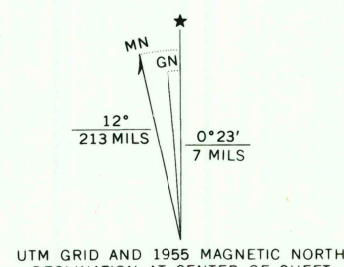
Map by the Army Map Service  
Edited and published by the Geological Survey

Control by USGS, USC&GS, and TVA  
Topography from aerial photographs by multiplex methods  
Aerial photographs taken 1942. Field check 1943  
Culture revised by the Geological Survey 1955

Polyconic projection. 1927 North American datum  
10,000-foot grid based on New York coordinate system,  
central zone  
1000-meter Universal Transverse Mercator grid ticks,  
zone 18, shown in blue

To place on the predicted North American Datum 1983  
move the projection lines 3 meters south and  
28 meters west as shown by dashed corner ticks

There may be private inholdings within the boundaries of  
the National or State reservations shown on this map



THIS MAP COMPLIES WITH NATIONAL MAP ACCURACY STANDARDS  
FOR SALE BY U. S. GEOLOGICAL SURVEY, DENVER, COLORADO 80225, OR RESTON, VIRGINIA 22092  
A FOLDER DESCRIBING TOPOGRAPHIC MAPS AND SYMBOLS IS AVAILABLE ON REQUEST



ROAD CLASSIFICATION			
Heavy-duty	Medium-duty	Light-duty	Unimproved dirt
U. S. Route	State Route		

POINT ROCK, N. Y.

43075-05-TF-024

1955

DMA 5870 1 NE-SERIES V821

USGS NMD HISTORICAL MAP

SEP 16 1988

REC'D FILE COPY