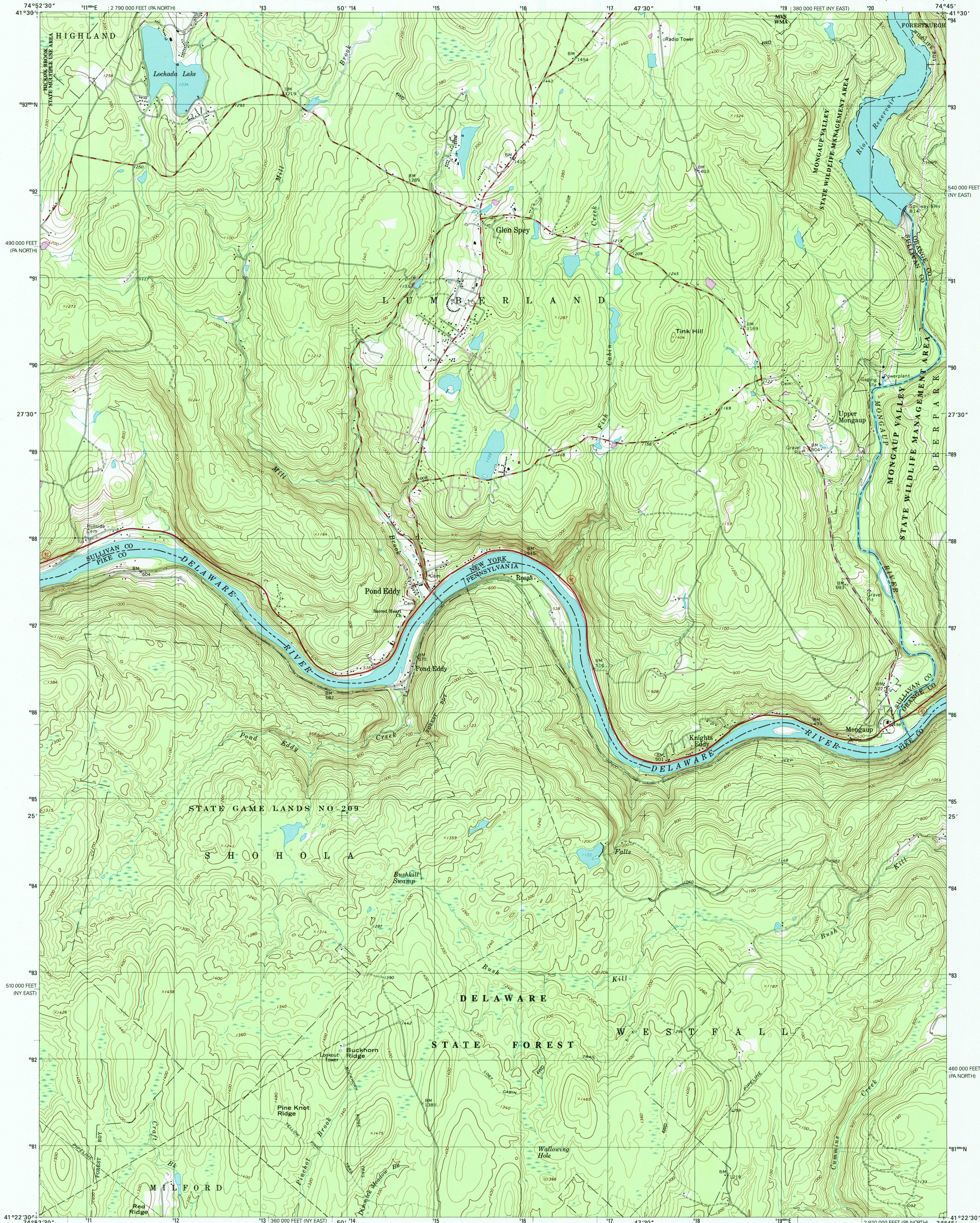




U.S. DEPARTMENT OF THE INTERIOR
U.S. GEOLOGICAL SURVEY



POND EDDY QUADRANGLE
NEW YORK-PENNSYLVANIA
7.5-MINUTE SERIES (TOPOGRAPHIC)



Produced by the United States Geological Survey

Topography compiled 1963. Planimetry derived from imagery taken 1973 and other sources. Photocopying using imagery dated 1997; no major culture or drainage changes observed. Survey control current as of 1965. Boundaries revised 1999.

North American Datum of 1927 (NAD 27)

Projection: New York coordinate system, east zone (transverse Mercator)

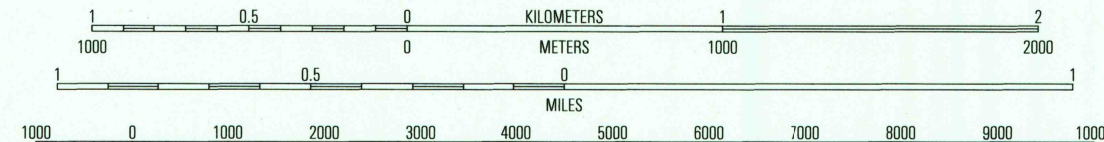
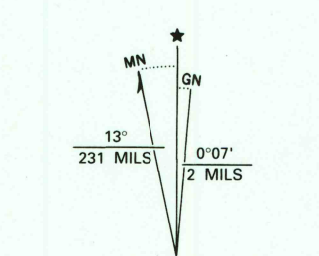
10 000-foot ticks: New York coordinate system, east zone and Pennsylvania coordinate system, north zone

1000-meter Universal Transverse Mercator grid, zone 18

North American Datum of 1983 (NAD 83) is shown by dashed corner ticks. The values of the shift between NAD 27 and NAD 83 for 7.5-minute intersections are obtainable from National Geodetic Survey NADCON software.

There may be private inholdings within the boundaries of the National or State reservations shown on this map.

Information shown in purple may not meet USGS content standards and may conflict with previously mapped contours.



CONTOUR INTERVAL 20 FEET
NATIONAL GEODETIC VERTICAL DATUM OF 1929
TO CONVERT FROM FEET TO METERS, MULTIPLY BY 0.3048



ROAD CLASSIFICATION
Primary highway
hard surface
Secondary highway
hard surface
Light-duty road, hard or
improved surface
Unimproved road
Interstate Route
U.S. Route
State Route

1	2	3	1 Eldred
4	5	4 Shohola	5 Port Jervis North
6	7	6 Edgemere	7 Milford
	8	7 Milford	8 Port Jervis South

POND EDDY, NY-PA
1997

NIMA 6066-SERIES V821

RECEIVED
NOV 3 0 1999
USGS NAD
HISTORICAL MAP ARCHIVES

