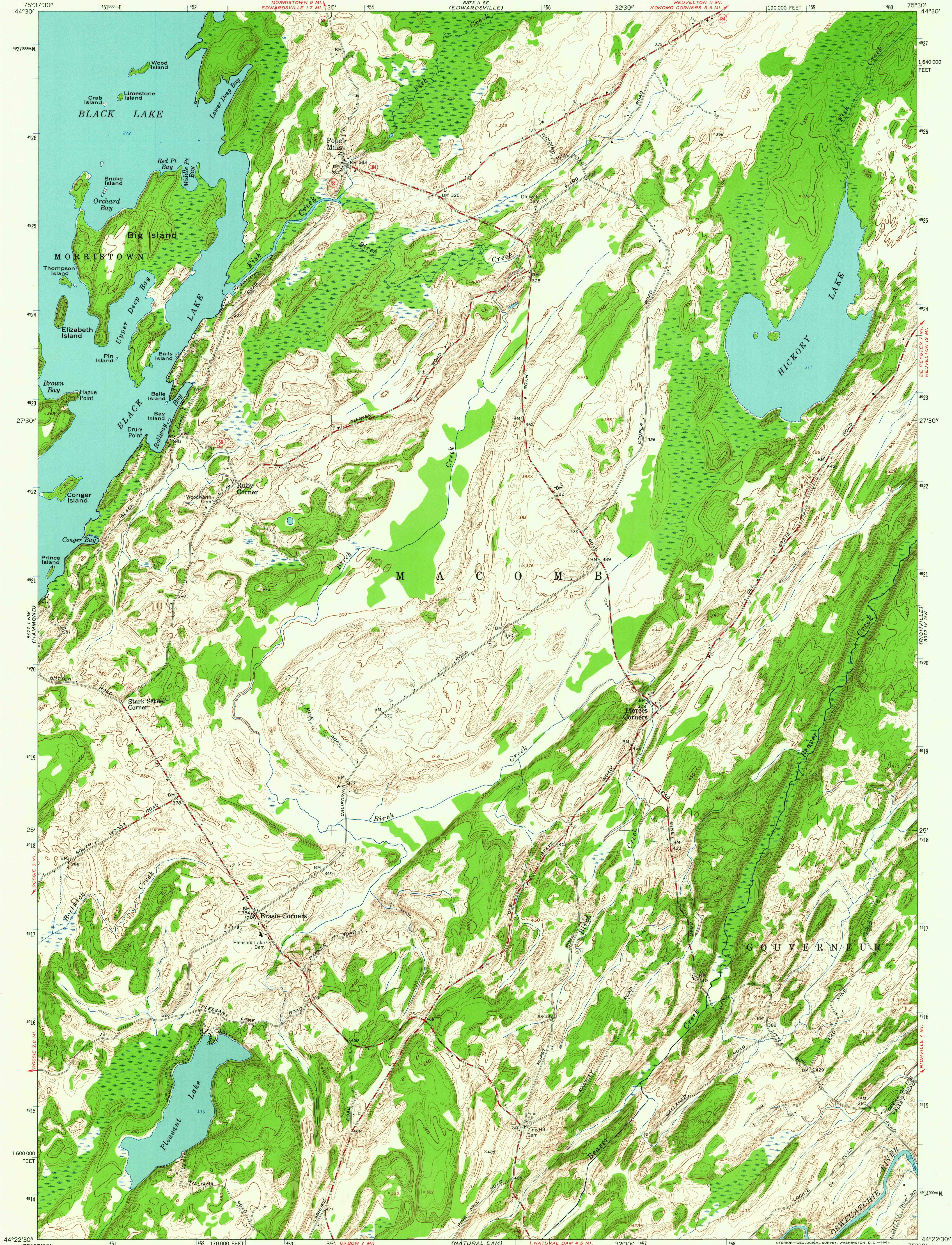
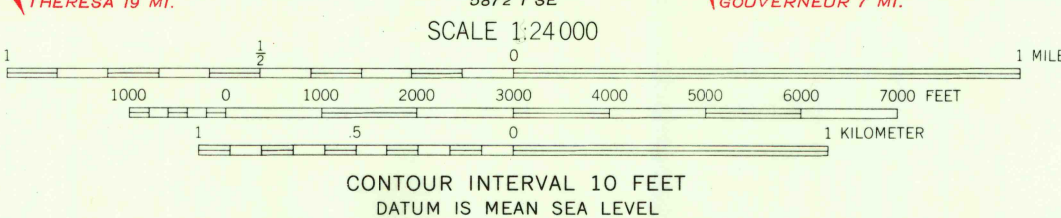
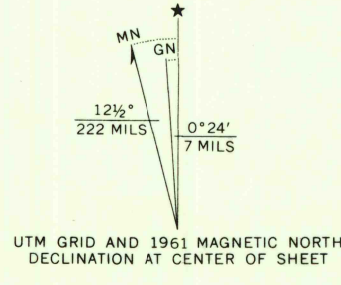


UNITED STATES
DEPARTMENT OF THE INTERIOR
GEOLOGICAL SURVEY

POPE MILLS QUADRANGLE
NEW YORK-ST. LAWRENCE CO.
7.5 MINUTE SERIES (TOPOGRAPHIC)
NE/4 HAMMOND 15' QUADRANGLE



Mapped by the Army Map Service
Edited and published by the Geological Survey
Control by USGS, USC&GS, TVA, and USCE
Topography by photogrammetric methods from aerial
photographs taken 1947. Field checked 1949
Revised by the Geological Survey 1961
Polyconic projection, 1927 North American datum
10,000-foot grid based on New York coordinate system,
east zone
1000-meter Universal Transverse Mercator grid ticks,
zone 18, shown in blue



ROAD CLASSIFICATION	
Medium-duty	Light-duty
Unimproved dirt	State Route

THIS MAP COMPLIES WITH NATIONAL MAP ACCURACY STANDARDS
FOR SALE BY U.S. GEOLOGICAL SURVEY, WASHINGTON 25, D. C.
A FOLDER DESCRIBING TOPOGRAPHIC MAPS AND SYMBOLS IS AVAILABLE ON REQUEST

POPE MILLS, N. Y.
NE/4 HAMMOND 15' QUADRANGLE
N4422.5-W7530/7.5

1961
AMS 5872 1 NE—SERIES V821

FEB 12 1964

3080