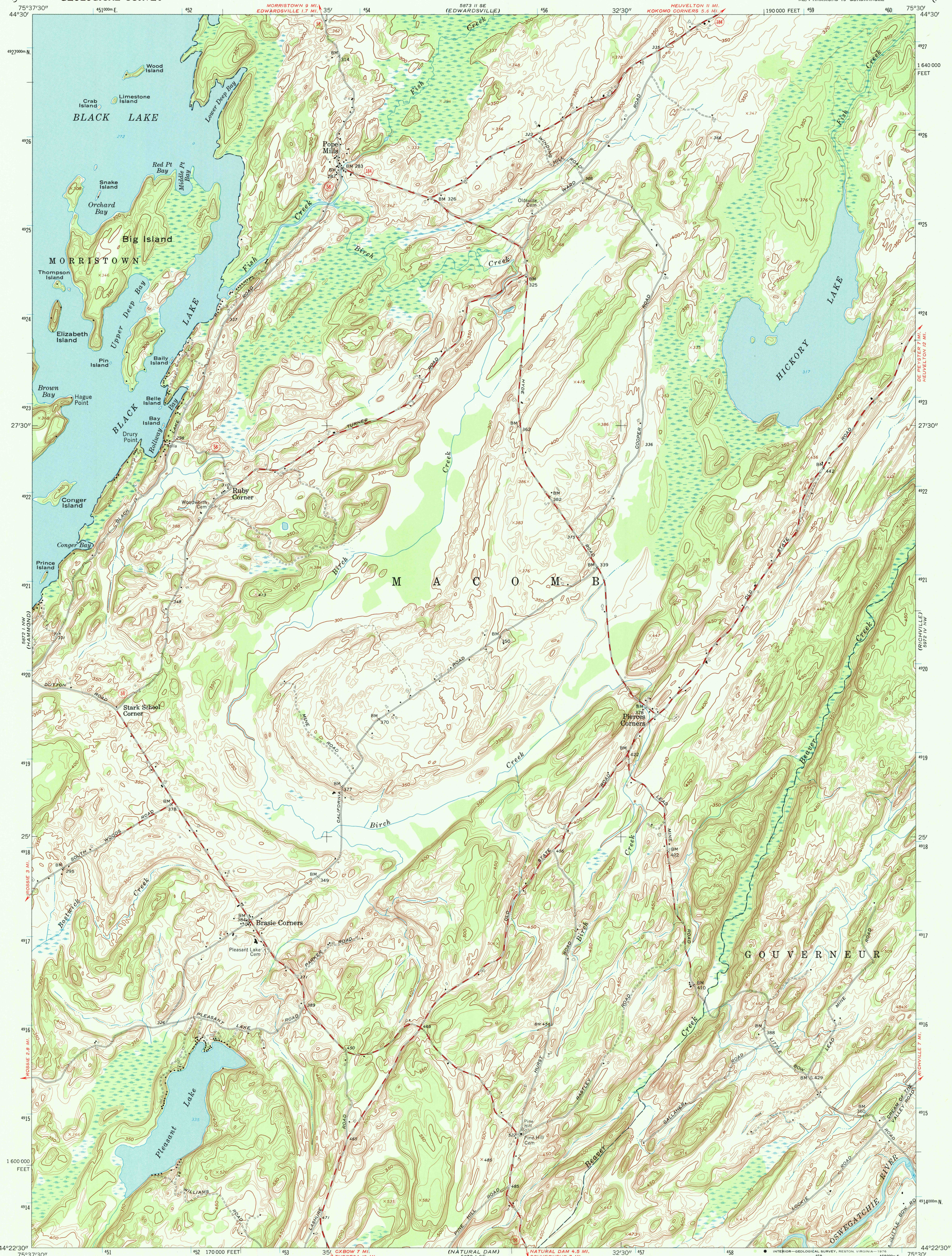
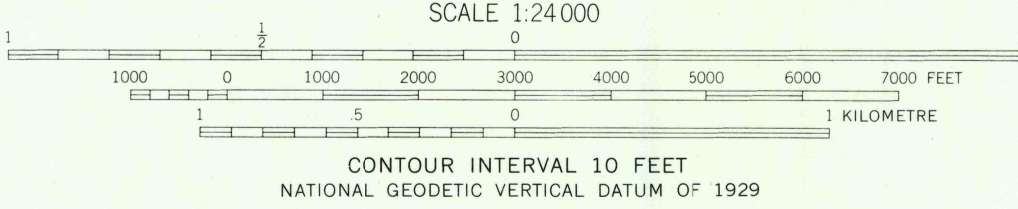
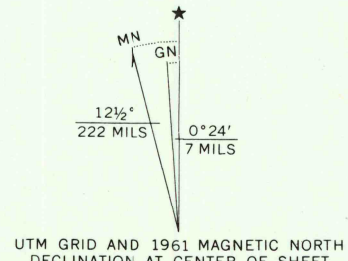


UNITED STATES
DEPARTMENT OF THE INTERIOR
GEOLOGICAL SURVEY

POPE MILLS QUADRANGLE
NEW YORK—ST. LAWRENCE CO.
7.5 MINUTE SERIES (TOPOGRAPHIC)
NE 1/4 HAMMOND 15' QUADRANGLE



Mapped by the Army Map Service
Edited and published by the Geological Survey
Control by USGS, USC&GS, TVA, and USCE
Topography by photogrammetric methods from aerial
photographs taken 1947. Field checked 1949
Revised by the Geological Survey 1961
Polyconic projection. 1927 North American datum
10,000-foot grid based on New York coordinate system,
east zone
1000-metre Universal Transverse Mercator grid ticks,
zone 18, shown in blue
Map photoinspected 1980
No major culture or drainage changes observed



ROAD CLASSIFICATION
Medium-duty ——— Light-duty ———
Unimproved dirt ———
State Route —○—

THIS MAP COMPLIES WITH NATIONAL MAP ACCURACY STANDARDS
FOR SALE BY U.S. GEOLOGICAL SURVEY
DENVER, COLORADO 80225, OR RESTON, VIRGINIA 22092
A FOLDER DESCRIBING TOPOGRAPHIC MAPS AND SYMBOLS IS AVAILABLE ON REQUEST

POPE MILLS, N. Y.
NE 1/4 HAMMOND 15' QUADRANGLE
N4422.5—W7530.7.5

1961
PHOTOINSPECTED 1980
AMS 5872 I NE—SERIES V82 I

U.S. GEOLOGICAL SURVEY
OCT 24 1960
REC'D FILE COPY