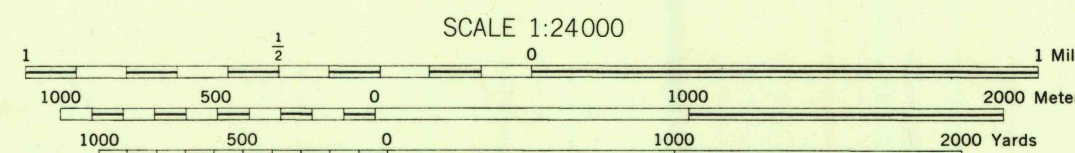


U.S.G.S.  
FILE COPY  
Inspection and Editing.U.S.G.S.  
FILE COPY  
Inspection and Editing.A.M.S. V821  
Type F (AMS 1), 1946; Revised (AMS 2), 1946.

Prepared under the direction of the Chief of Engineers by the Army Map Service (AM), U. S. Army, Washington, D. C. Redrawn in 1946 from New York, 1:62,500, USGS, Schunemunk, 1935. Planimetric detail revised from aerial photography by photo-planimetric methods. Aerial photography by U. S. Army Air Force, 1946. Roads classified from County Maps prepared by Public Roads Administration, 1946. Approximate military reservation boundaries taken from information furnished by OCE, 1944. Horizontal and vertical control by U. S. Geological Survey, U. S. Coast and Geodetic Survey and Palisades Interstate Park Commission. Planimetry and road classification field checked by the United States Military Academy.

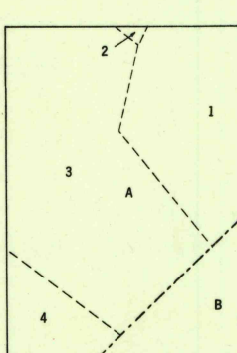
LEGEND	
ROAD DATA 1946	
Hard surface, heavy duty road, more than two lanes wide; Federal route marker	Loose surface, graded, all weather road
Hard surface, heavy duty road, two lanes wide; State route marker	Loose surface, dry weather or dirt road
Hard surface, all weather road, two lanes wide	Trail
ABANDONED OR DESTROYED	
Railroads	Single track Double track
Normal gauge	Single track Double track
Narrow gauge	Single track
Carline	Carline in street; Railroad in street
UNDER CONSTRUCTION	
Double track	
BOUNDARIES	
National	State (with monument)
County	Town
Corporate limit	Reservation
Military reservation	School; Church
Mine	
Lighthouse	Intermittent lake
Beacon	Swamp, marsh
Horizontal control sta.	Rock mark
Spot elevation	Large rapids and falls
Cemetery	Rocks bare at low tide
Woods or brushwood	Wharf, pier
Orchard	Man-made shoreline
Vineyard	

CONTOUR INTERVAL 20 FEET  
DATUM IS MEAN SEA LEVEL  
TRANSVERSE MERCATOR PROJECTION  
1927 NORTH AMERICAN DATUM

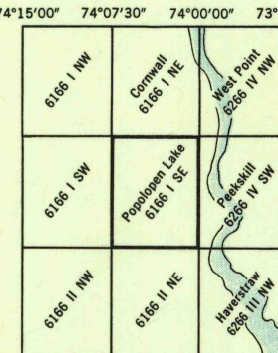
HEIGHTS IN FEET

REPRINTED FROM MILITARY EDITION FOR CIVIL USE  
PENDING REVISION FOR STANDARD ISSUE  
SOLD AND DISTRIBUTED BY U. S. GEOLOGICAL SURVEY, WASHINGTON 25, D. C.USGS  
Historical File  
Topographic Division12°  
TRUE NORTH  
MAGNETIC NORTH  
APPROXIMATE MEAN  
DECLINATION, 1947

INDEX TO BOUNDARIES

A. Orange County  
1. Highland Town  
2. Cornwall Town  
3. Woodbury Town  
4. Tuxedo Town  
5. Stony Point Town

INDEX TO ADJOINING SHEETS

Sheet 6166 I SE falls within NR 18-4  
AMS V821, 1:62,500U.S.G.S.  
FILE COPYPOPOLOPEN LAKE, NEW YORK  
N4115-W7400/7.510-20-48  
4190