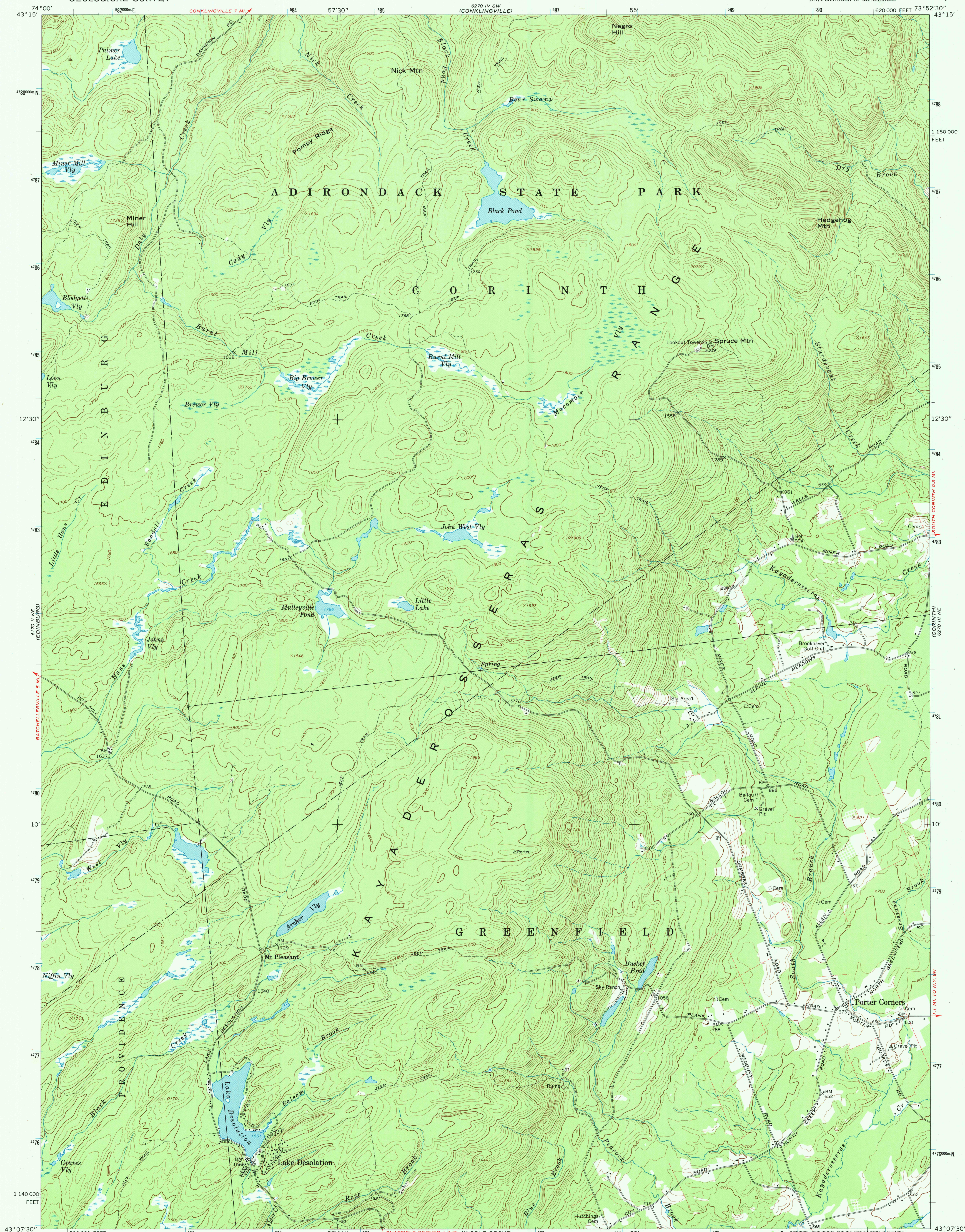
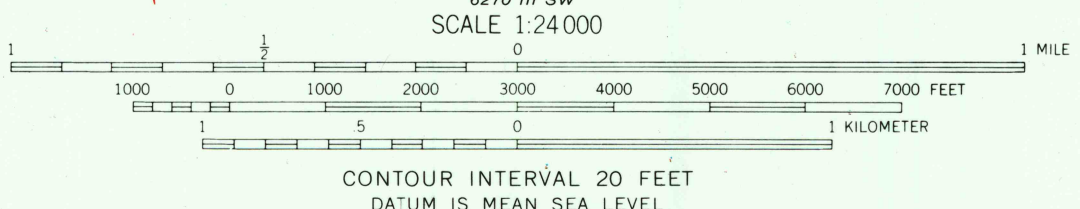
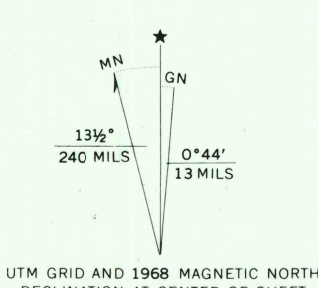


67° 15' 50"
LAKE LUZERNE



Mapped, edited, and published by the Geological Survey
Control by USGS and USC&GS
Topography by photogrammetric methods from aerial photographs
taken 1965. Field checked 1968
Polyconic projection. 1927 North American datum
10,000-foot grid based on New York coordinate system, east zone
1000-meter Universal Transverse Mercator grid ticks, zone 18,
shown in blue
Fine red dashed lines indicate selected fence and field lines where
generally visible on aerial photographs. This information is unchecked



CONTOUR INTERVAL 20 FEET
DATUM IS MEAN SEA LEVEL



ROAD CLASSIFICATION
Light-duty road, all weather, Unimproved road, fair or dry weather, improved surface

PORTER CORNERS, N. Y.
NW/4 SARATOGA 15' QUADRANGLE
N4307.5-W7352.5/7.5

1968

AMS 6270 III NW-SERIES V821

THIS MAP COMPLIES WITH NATIONAL MAP ACCURACY STANDARDS
FOR SALE BY U. S. GEOLOGICAL SURVEY, WASHINGTON, D. C. 20242
A FOLDER DESCRIBING TOPOGRAPHIC MAPS AND SYMBOLS IS AVAILABLE ON REQUEST

RETURN TO:
1968 AND HISTORICAL MAP ARCHIVES