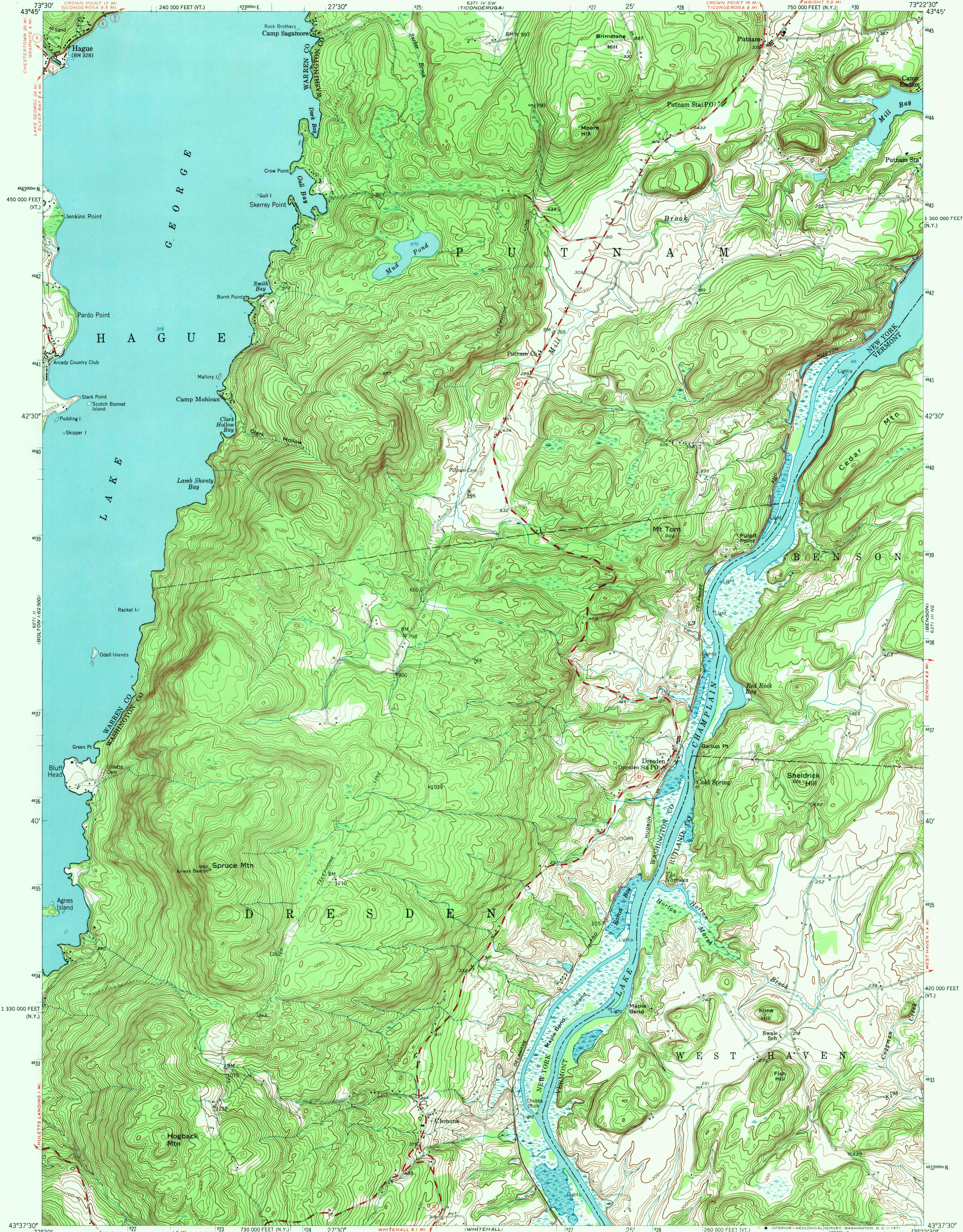
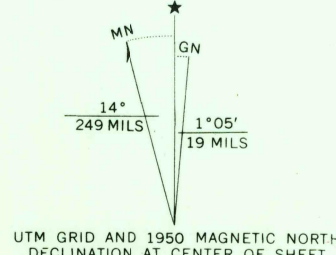


UNITED STATES  
DEPARTMENT OF THE INTERIOR  
GEOLOGICAL SURVEY

PUTNAM QUADRANGLE  
NEW YORK-VERMONT  
7.5 MINUTE SERIES (TOPOGRAPHIC)



Maped, edited, and published by the Geological Survey  
Control by USGS and USC&GS  
Topography from aerial photographs by multiplex methods  
Aerial photographs taken 1942 and 1947. Field check 1950  
Polyconic projection. 1927 North American datum  
10,000-foot grids based on New York coordinate system,  
east zone, and Vermont coordinate system  
The area shown west of Lake Champlain is in  
the Adirondack State Park  
1000-meter Universal Transverse Mercator grid ticks,  
zone 18, shown in blue



CONTOUR INTERVAL 20 FEET  
DATUM IS MEAN SEA LEVEL

THIS MAP COMPLIES WITH NATIONAL MAP ACCURACY STANDARDS  
FOR SALE BY U. S. GEOLOGICAL SURVEY, WASHINGTON, D. C. 20242  
A FOLDER DESCRIBING TOPOGRAPHIC MAPS AND SYMBOLS IS AVAILABLE ON REQUEST

ROAD CLASSIFICATION	
Heavy-duty	4 LANE 16 LANE
Medium-duty	4 LANE 16 LANE
Light-duty	Unimproved dirt
U. S. Route	State Route

PUTNAM, N.Y.-VT.  
NW 1/4 WHITEHALL 15' QUADRANGLE  
N4337.5-W7322.5/7.5

1950

AMS 6371 III NW-SERIES V821

U.S.G.S.  
FILE COPY  
TOPOGRAPHIC DIVISION  
HISTORICAL  
2245

JUL 16 1971