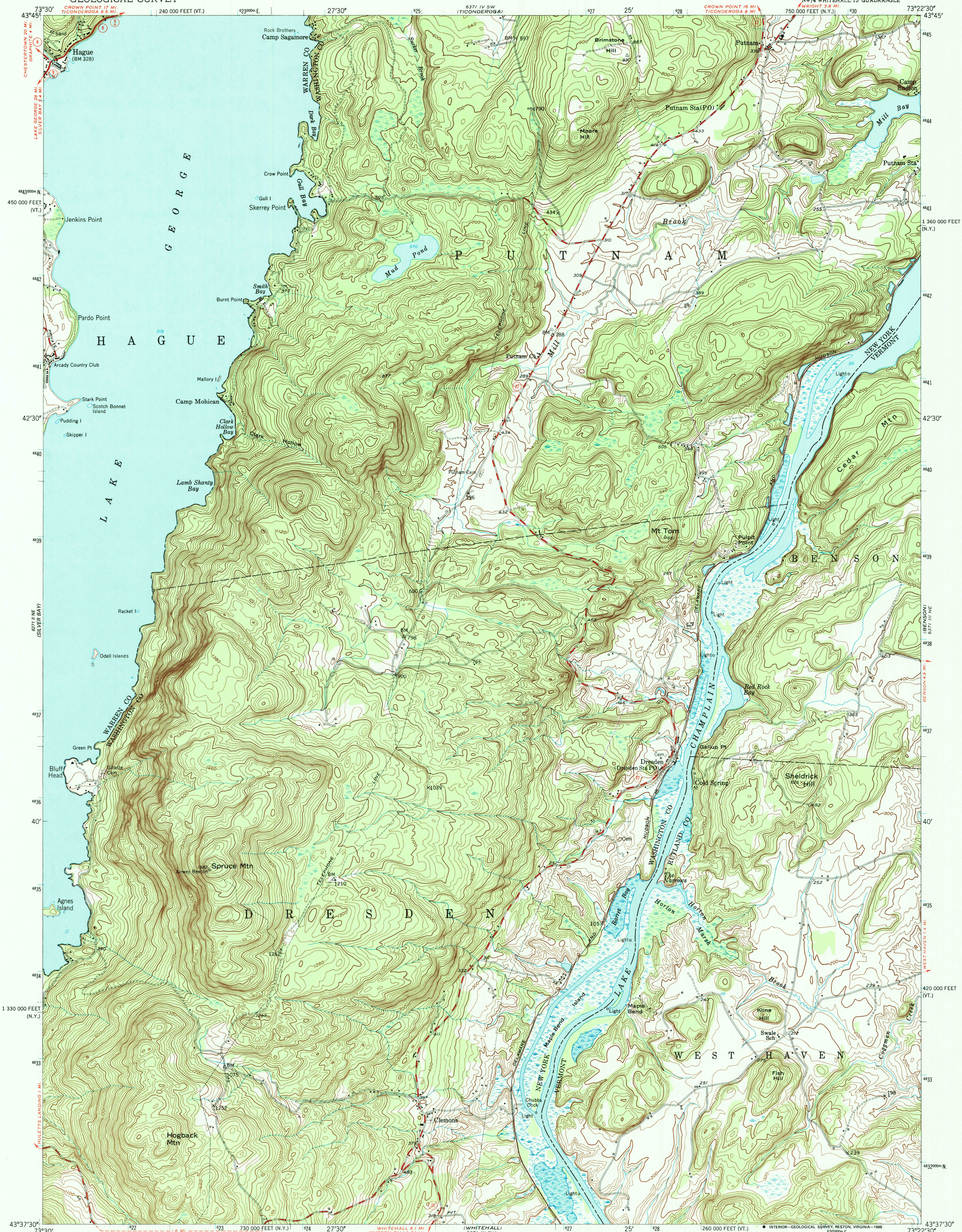


UNITED STATES
DEPARTMENT OF THE INTERIOR
GEOLOGICAL SURVEY

PUTNAM QUADRANGLE
NEW YORK-VERMONT
7.5 MINUTE SERIES (TOPOGRAPHIC)



Mapped, edited, and published by the Geological Survey

Control by USGS and USC&GS

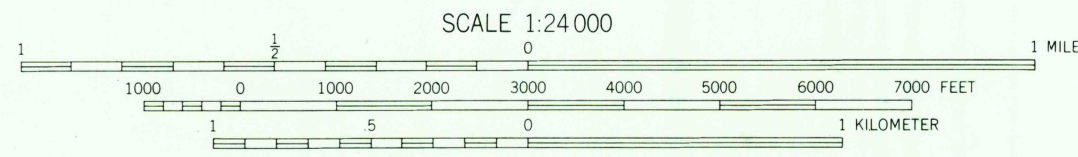
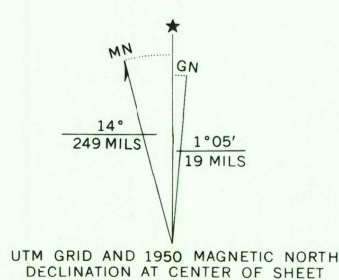
Topography from aerial photographs by multiplex methods
Aerial photographs taken 1942 and 1947. Field check 1950

Polyconic projection. 1927 North American datum
10,000-foot grids based on New York coordinate system,
east zone, and Vermont coordinate system

The area shown west of Lake Champlain is in
the Adirondack State Park

1000-meter Universal Transverse Mercator grid ticks,
zone 18, shown in blue

To place on the predicted North American Datum 1983
move the projection lines 3 meters south and
34 meters west as shown by dashed corner ticks



THIS MAP COMPLIES WITH NATIONAL MAP ACCURACY STANDARDS
FOR SALE BY U. S. GEOLOGICAL SURVEY, DENVER, COLORADO 80225, OR RESTON, VIRGINIA 22092
A FOLDER DESCRIBING TOPOGRAPHIC MAPS AND SYMBOLS IS AVAILABLE ON REQUEST

ROAD CLASSIFICATION			
Heavy-duty	4 LANE 16 LANE	Light-duty	
Medium-duty	4 LANE 16 LANE	Unimproved dirt	
U. S. Route		State Route	

PUTNAM, N.Y.-VT.
NW 1/4 WHITEHALL 15' QUADRANGLE
43073-F4-TF-024

1950

DMA 6371 III NW-SERIES V821

REC'D FILE COPY

JUN 30 1983

USGS DIST. INFORMATION UNIT