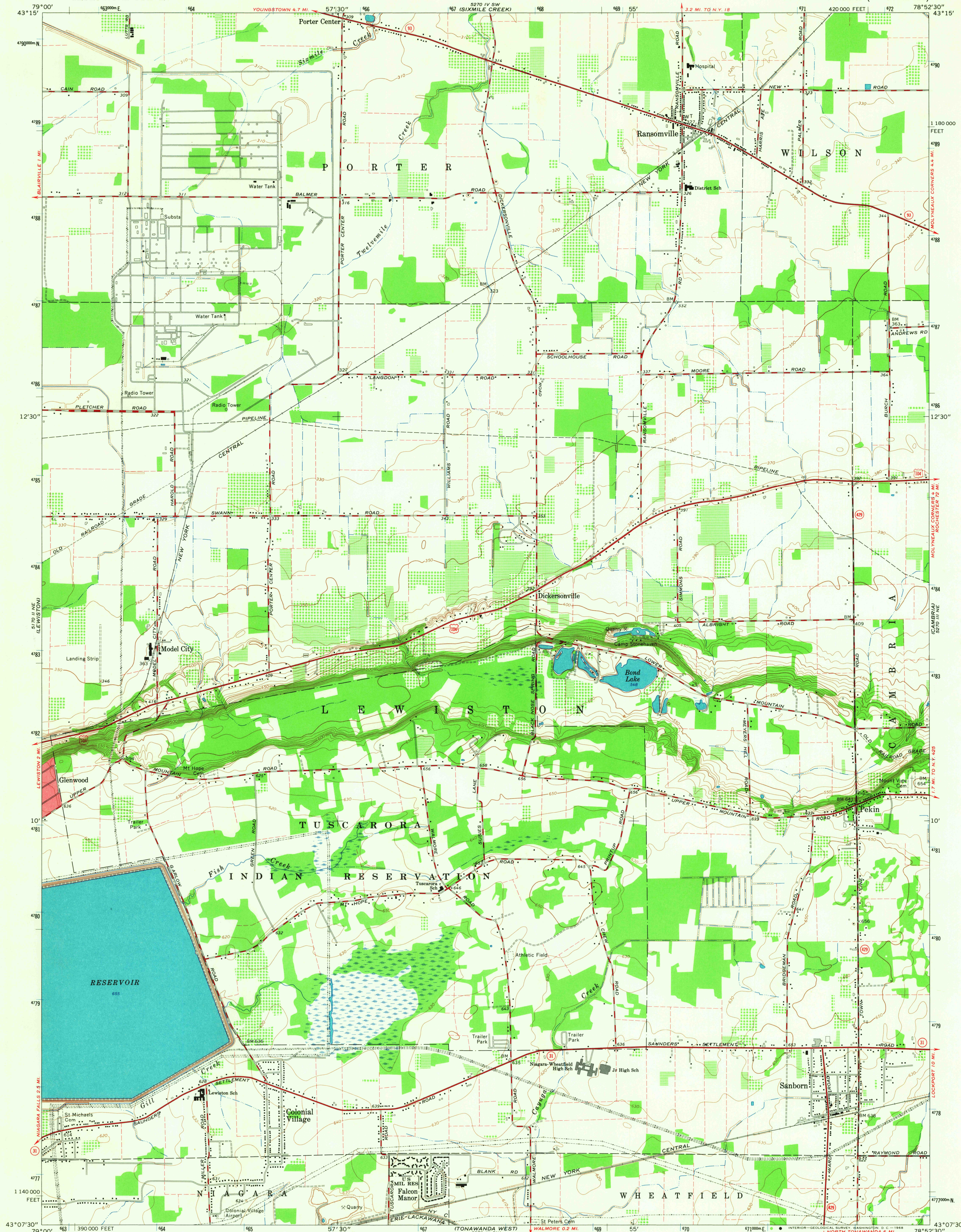


UNITED STATES
DEPARTMENT OF THE INTERIOR
GEOLOGICAL SURVEY

RANSOMVILLE QUADRANGLE
NEW YORK-NIAGARA CO.
7.5 MINUTE SERIES (TOPOGRAPHIC)



Mapped, edited, and published by the Geological Survey in cooperation with New York Department of Transportation Control by USGS, USC&GS, and USCE.
Planimetry compiled by U. S. Corps of Engineers from aerial photographs taken 1942. Topography by planetable surveys 1948. Revised 1965.

Polyconic projection. 1927 North American datum. 10,000-foot grid based on New York coordinate system, west zone 1000-meter Universal Transverse Mercator grid ticks, zone 17, shown in blue.

Fine red dashed lines indicate selected fence and field lines where generally visible on aerial photographs. This information is unchecked. Red tint indicates area in which only landmark buildings are shown.



SCALE 1:24,000
CONTOUR INTERVAL 10 FEET
DATUM IS MEAN SEA LEVEL

THIS MAP COMPLIES WITH NATIONAL MAP ACCURACY STANDARDS
FOR SALE BY U. S. GEOLOGICAL SURVEY, WASHINGTON, D. C. 20242
A FOLDER DESCRIBING TOPOGRAPHIC MAPS AND SYMBOLS IS AVAILABLE ON REQUEST

USGS
Historical File
Topographic Division



ROAD CLASSIFICATION
Heavy-duty ——— Light-duty ———
Medium-duty ——— Unimproved dirt ———
U. S. Route ——— State Route ———

RANSOMVILLE, N. Y.
N4307.5-W7852.5/7.5

1965

AMS 5270 III NW-SERIES 7821

3630
MAY 3 1968