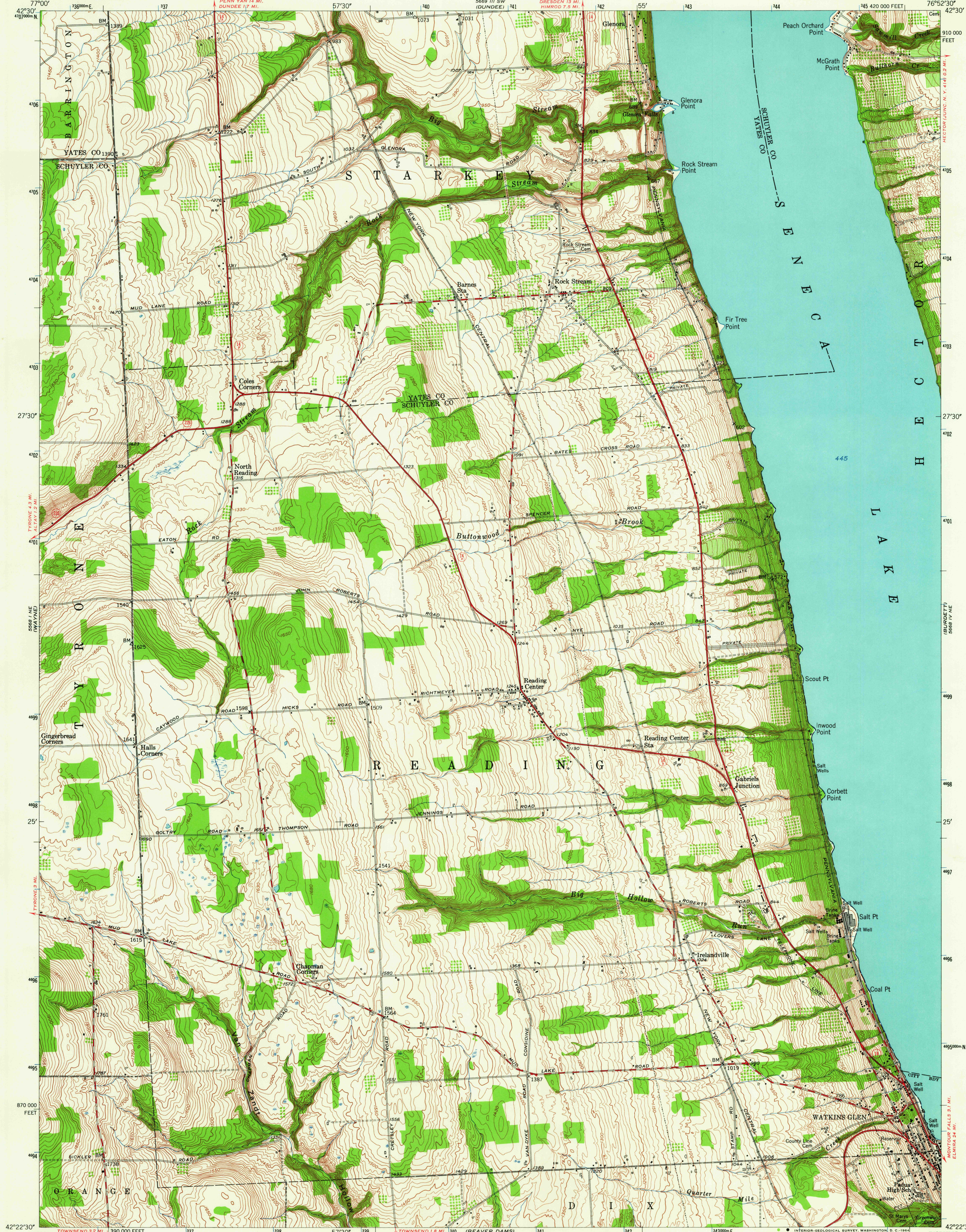
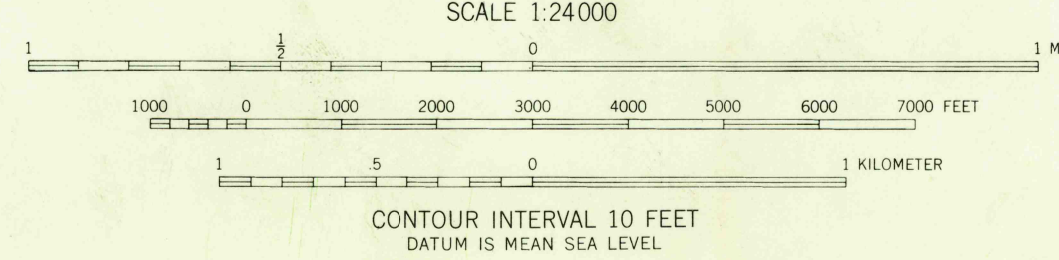
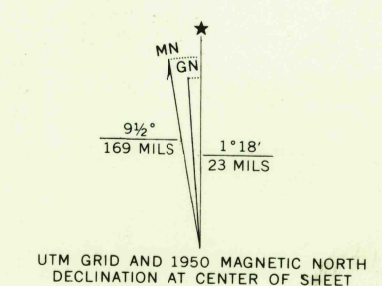


UNITED STATES
DEPARTMENT OF THE INTERIOR
GEOLOGICAL SURVEY

READING CENTER QUADRANGLE
NEW YORK
7.5 MINUTE SERIES (TOPOGRAPHIC)
NW/4 WATKINS GLEN 15' QUADRANGLE



Maped, edited, and published by the Geological Survey
Control by USGS and USC&GS
Topography from aerial photographs by multiplex methods
Aerial photographs taken 1944. Field check 1950
Polyconic projection. 1927 North American datum
10,000-foot grid based on New York Coordinate system,
central zone
1000-meter Universal Transverse Mercator grid ticks,
zone 18, shown in blue



ROAD CLASSIFICATION

Heavy-duty	4 LANE (6 LANE)	Light-duty
Medium-duty	4 LANE (6 LANE)	Unimproved dirt
U. S. Route		State Route

READING CENTER, N. Y.
NW/4 WATKINS GLEN 15' QUADRANGLE
N4222.5-W7652.5/7.5

1950

AMS 5668 IV NW-SERIES V821

THIS MAP COMPLIES WITH NATIONAL MAP ACCURACY STANDARDS
FOR SALE BY U. S. GEOLOGICAL SURVEY, WASHINGTON 25, D. C.
A FOLDER DESCRIBING TOPOGRAPHIC MAPS AND SYMBOLS IS AVAILABLE ON REQUEST

U.S.G.S.
FILE COPY
TOPOGRAPHIC DIVISION

1545