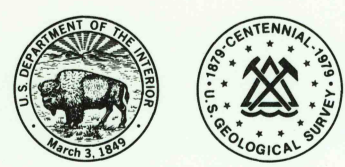
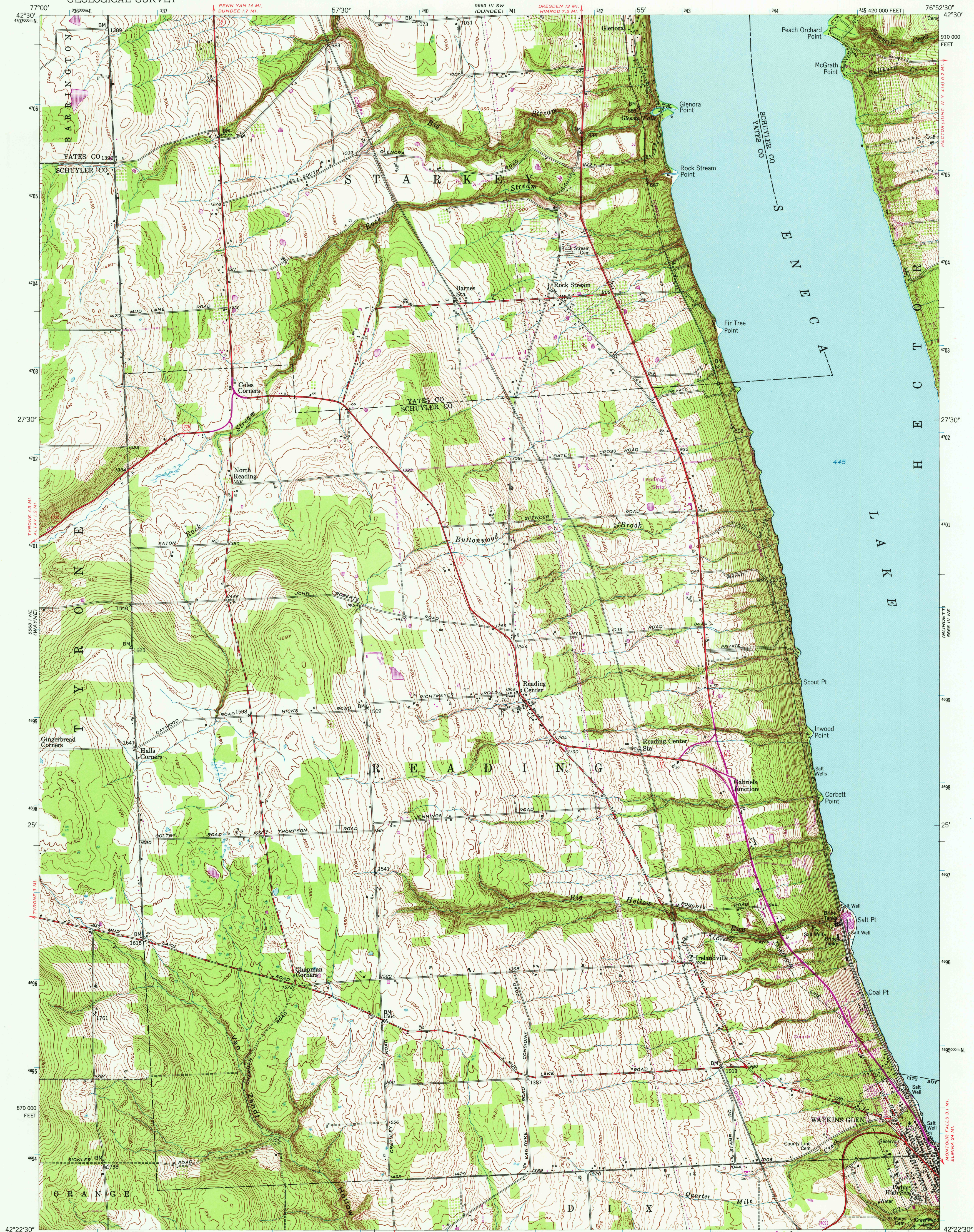


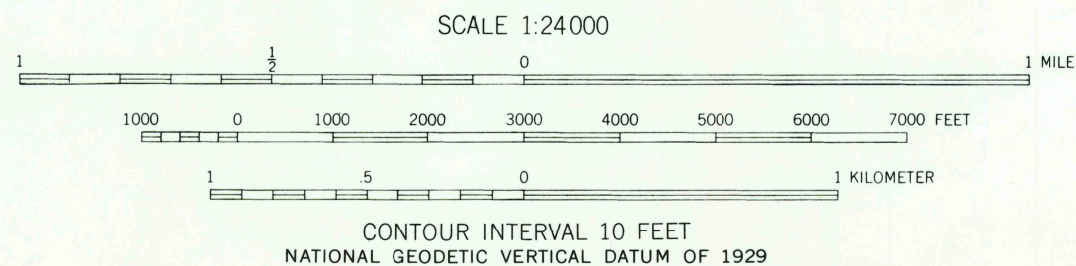
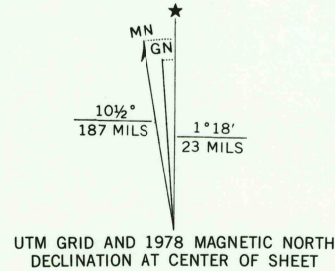
UNITED STATES
DEPARTMENT OF THE INTERIOR
GEOLOGICAL SURVEY



READING CENTER QUADRANGLE
NEW YORK
7.5 MINUTE SERIES (TOPOGRAPHIC)



Maped, edited, and published by the Geological Survey
Control by USGS and USC&GS
Topography from aerial photographs by multiplex methods
Aerial photographs taken 1944. Field check 1950
Polyconic projection. 1927 North American datum
10,000-foot grid based on New York Coordinate system,
central zone
1000-meter Universal Transverse Mercator grid ticks,
zone 18, shown in blue
Revisions shown in purple and woodland compiled from
aerial photographs taken 1976 and other source data.
This information not field checked. Map edited 1978



ROAD CLASSIFICATION
Heavy-duty ——— 4 LANE (6 LANE) Light-duty ———
Medium-duty ——— 4 LANE (6 LANE) Unimproved dirt ———
U.S. Route ——— State Route ———

READING CENTER, N.Y.
N4222.5-W7652.5/7.5
1950
PHOTOREVISED 1978
AMS 5668 IV NW—SERIES V821

APR 10 1978