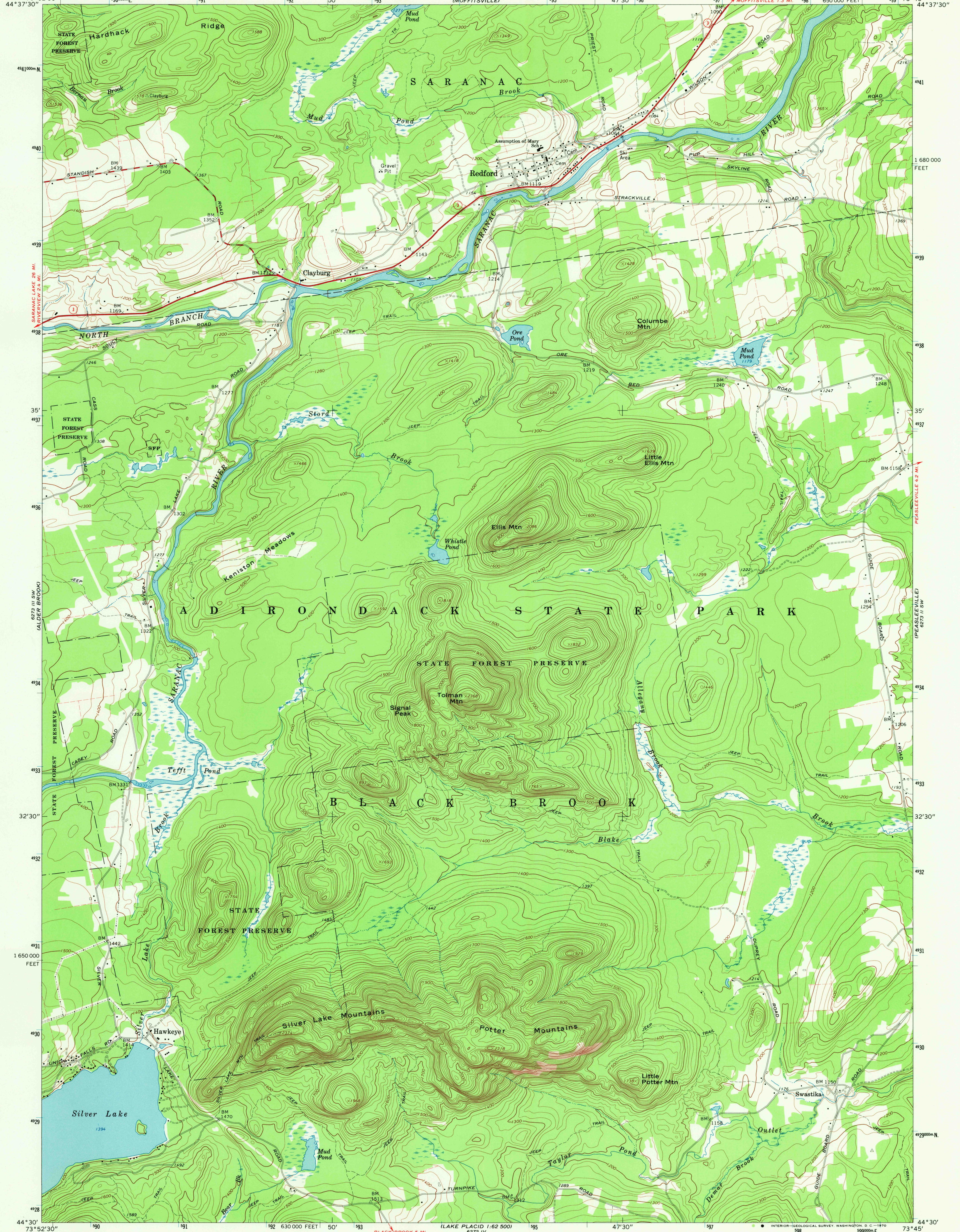


UNITED STATES
DEPARTMENT OF THE INTERIOR
GEOLOGICAL SURVEY

STATE OF NEW YORK
DEPARTMENT OF TRANSPORTATION

REDFORD QUADRANGLE
NEW YORK-CLINTON CO.
7.5 MINUTE SERIES (TOPOGRAPHIC)
SE/4 LYON MOUNTAIN 15' QUADRANGLE



Mapped, edited, and published by the Geological Survey

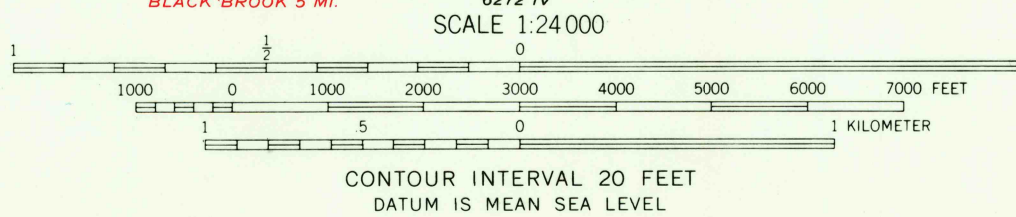
Control by USGS, USC&GS, and USCE

Topography by photogrammetric methods from aerial photographs taken 1965 and 1966. Field checked 1968

Polyconic projection. 1927 North American datum 10,000-foot grid based on New York coordinate system, east zone 1000-meter Universal Transverse Mercator grid ticks, zone 18, shown in blue

Fine red dashed lines indicate selected fence and field lines where generally visible on aerial photographs. This information is unchecked

UTM GRID AND 1980 MAGNETIC NORTH DECLINATION AT CENTER OF SHEET



USGS
Historical File
Topographic Division

ROAD CLASSIFICATION	
Primary highway, all weather, hard surface	Light-duty road, all weather, improved surface
Secondary highway, all weather, hard surface	Unimproved road, fair or dry weather
	State Route



U.S.G.S.
FILE COPY
TOPOGRAPHIC DIVISION

REDFORD, N. Y.
SE/4 LYON MOUNTAIN 15' QUADRANGLE
N4430-W7345/7.5

1968

AMS 6273 III SE-SERIES Y821

THIS MAP COMPLIES WITH NATIONAL MAP ACCURACY STANDARDS
FOR SALE BY U. S. GEOLOGICAL SURVEY, WASHINGTON, D. C. 20422
A FOLDER DESCRIBING TOPOGRAPHIC MAPS AND SYMBOLS IS AVAILABLE ON REQUEST

4715
AUG 26 1970