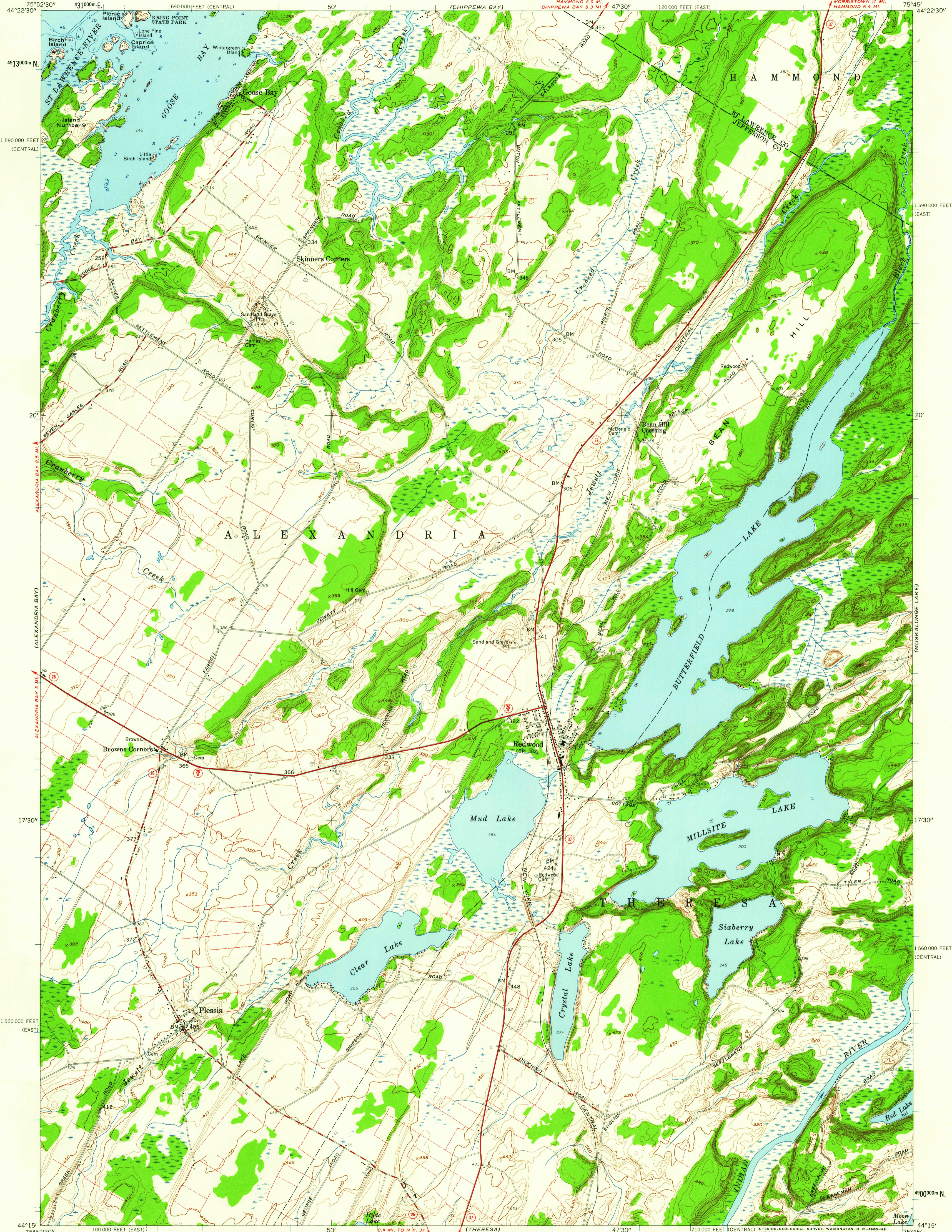


UNITED STATES
DEPARTMENT OF THE INTERIOR
GEOLOGICAL SURVEY

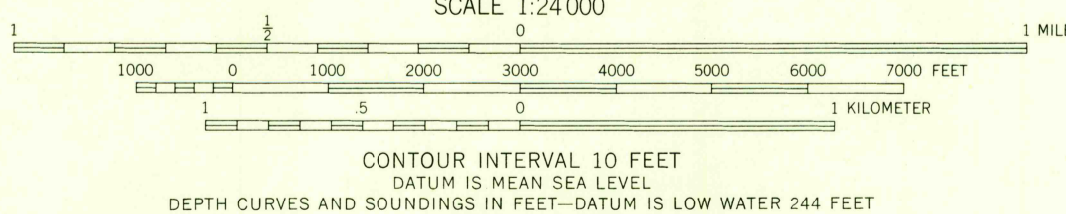
STATE OF NEW YORK
DEPARTMENT OF PUBLIC WORKS

REDWOOD QUADRANGLE
NEW YORK
7.5 MINUTE SERIES (TOPOGRAPHIC)
SE/4 ALEXANDRIA BAY 15' QUADRANGLE



Mapped, edited, and published by the Geological Survey
Control by USGS, USC&GS, USCE, U. S. Lake Survey, and TVA
Topography from aerial photographs by photogrammetric methods
Aerial photographs taken 1957. Field check 1958
Hydrography compiled from U. S. Lake Survey chart 15 (1956)
Polyconic projection. 1927 North American datum
10,000-foot grids based on New York coordinate system,
central and east zones
1000-meter Universal Transverse Mercator grid ticks,
zone 18, shown in blue
Fine red dashed lines indicate selected fence and field lines
visible on aerial photographs. This information is unchecked
Unchecked elevations are shown in brown

APPROXIMATE MEAN
DECLINATION, 1958



USGS
Historical File
Topographic Division



ROAD CLASSIFICATION
Heavy-duty ——— Light-duty ———
Medium-duty ——— Unimproved dirt ———
State Route ———

REDWOOD, N. Y.
SE/4 ALEXANDRIA BAY 15' QUADRANGLE
N4415—W7545/7.5

1958

U.S.G.S.
FILE COPY
TOPOGRAPHIC DIVISION

MAY 26 1960
2930