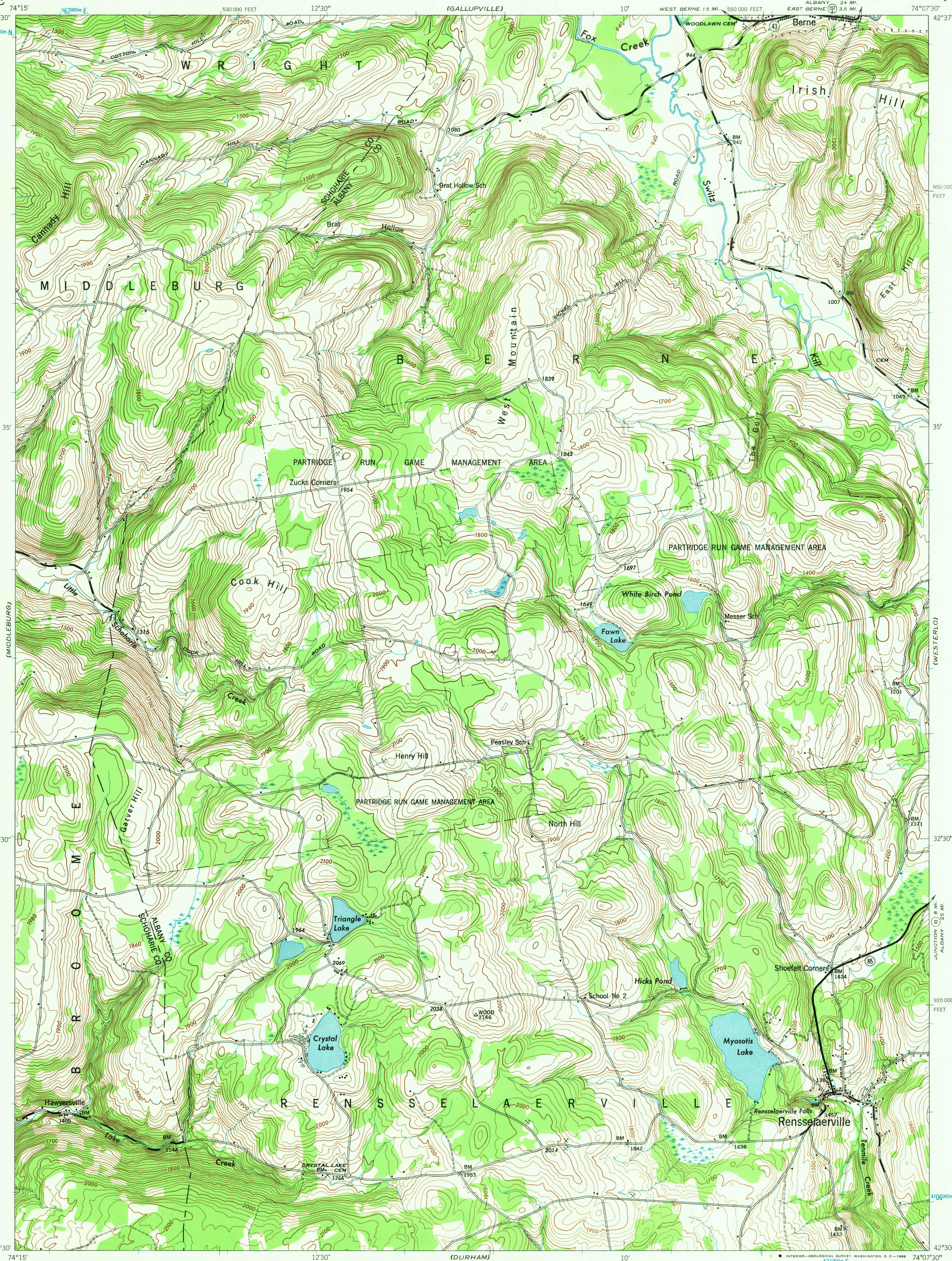


NEW YORK
SCALE 1:24,000

WAR DEPARTMENT
CORPS OF ENGINEERS, U. S. ARMY

RENSSELAERVILLE QUADRANGLE
7½-MINUTE SERIES



Mapped by Tennessee Valley Authority under direction of the
Chief of Engineers, U. S. Army, 1944.
Control by USCGS and TVA.
Topography by U. S. Geological Survey and Tennessee Valley Authority
by Stereophotogrammetric methods (Multiplex).
Field completion surveys by TVA.
Wide-angle photography by TVA, 1943.
Polyconic projection, 1927 North American datum.

ROAD CLASSIFICATION
1943
Dependable hard-surface, heavy-duty road. Loose surface graded, dry-weather road. U. S. Route 7
Secondary, hard-surface, all-weather road. Dirt road. State Route 20
More than two lanes indicated by note along road with tick at point of change. 3 LANE 4 LANE

THIS MAP COMPLIES WITH THE NATIONAL STANDARD MAP ACCURACY REQUIREMENTS.

Scale 1:24,000
1 000 500 0 1000 2000 Yards

CONTOUR INTERVAL 20 FEET
DATUM IS MEAN SEA LEVEL

REPRINTED FROM MILITARY EDITION FOR CIVIL USE
TEN THOUSAND FOOT GRID BASED ON NEW YORK PLANE COORDINATE SYSTEM, EASTERN ZONE
ONE THOUSAND METER UNIVERSAL TRANSVERSE MERCATOR GRID TICS, ZONE 18, SHOWN IN BLUE
FOR SALE BY U. S. GEOLOGICAL SURVEY, WASHINGTON, D. C. 20242
A FOLDER DESCRIBING TOPOGRAPHIC MAPS AND SYMBOLS IS AVAILABLE ON REQUEST

USGS
Historical File
Topographic Division

APPROXIMATE MEAN
DECLINATION, 1946

U.S.G.S.
FILE COPY
TOPOGRAPHIC DIVISION

RENSSELAERVILLE, N. Y.
N4230-W7407.5/7.5
EDITION OF 1946

3075
FEB 6 1969