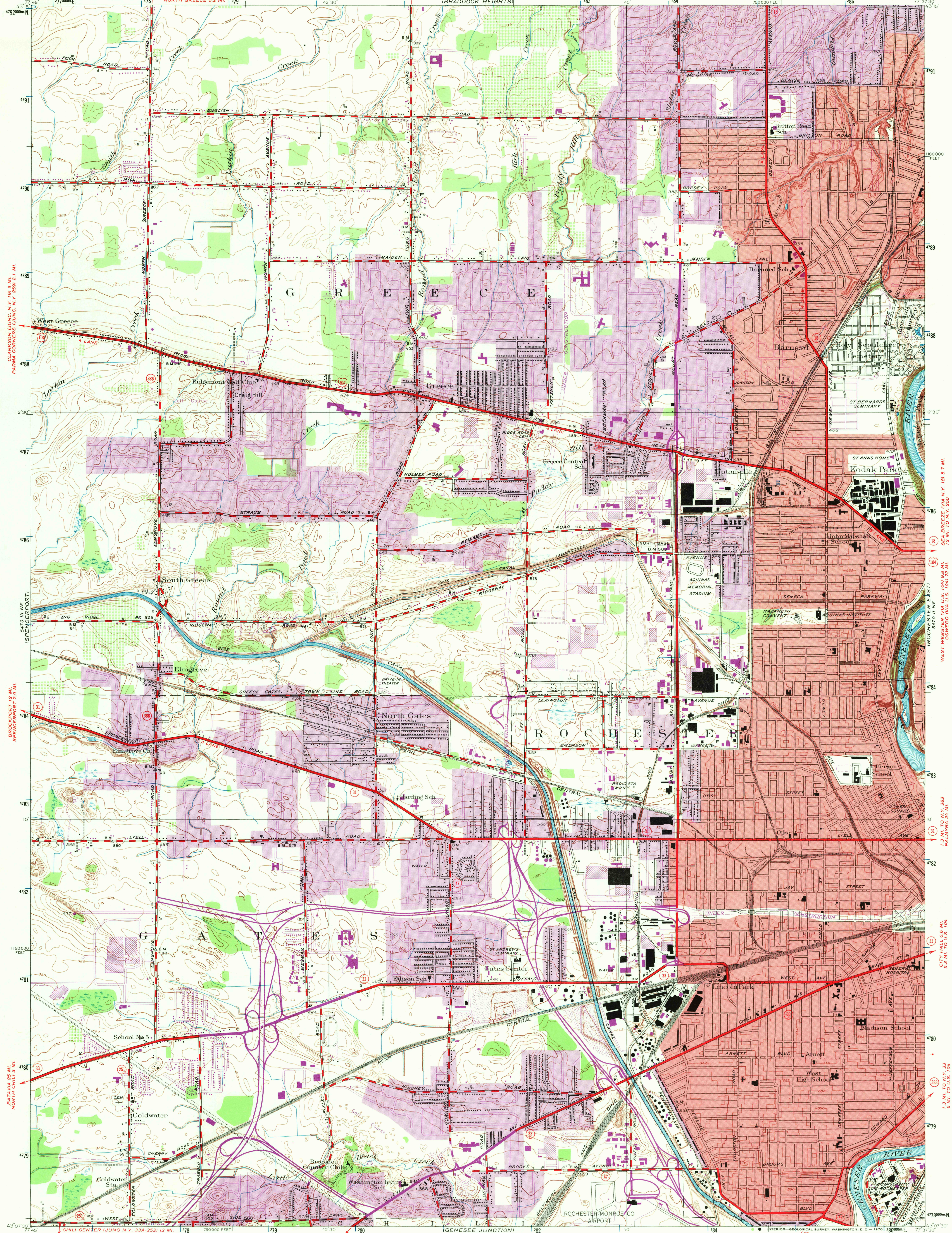


UNITED STATES  
DEPARTMENT OF THE INTERIOR  
GEOLOGICAL SURVEY

MONROE COUNTY, NEW YORK  
REGIONAL PLANNING BOARD

NEW YORK  
(MONROE COUNTY)  
ROCHESTER WEST QUADRANGLE



Topography by R.F. Wilcox and H.B. Smith  
Culture and drainage in part compiled from aerial photographs  
Surveyed in 1931. Revised in 1952  
Red tint indicates areas in which only landmark buildings are shown  
Polyconic projection. 1927 North American datum  
10,000 foot grid based on New York coordinate system, west zone  
1000 meter Universal Transverse Mercator grid ticks,  
zone 18, shown in blue  
Revisions shown in purple and recompilation of woodland areas  
compiled from aerial photographs taken 1969.  
This information not field checked  
Purple tint indicates extension of urban areas

UTM GRID AND 1969 MAGNETIC NORTH  
DECLINATION AT CENTER OF SHEET

SCALE 1:24,000  
1000 0 1000 2000 3000 4000 5000 6000 7000 FEET  
1 KILOMETER  
CONTOUR INTERVAL 5 FEET  
DATUM IS MEAN SEA LEVEL

USGS  
Historical File  
Topographic Division

ROAD CLASSIFICATION  
Heavy-duty ——— Light-duty ———  
Medium-duty ——— Unimproved dirt ———  
U.S. Route State Route

QUADRANGLE LOCATION

U.S.G.S.  
FILE COPY  
TOPOGRAPHIC DIVISION

ROCHESTER WEST, N.Y.  
N4307.5-W7737.5/7.5  
1952  
PHOTOGRAPHED 1969  
AMS 5470 II NW-SERIES V821

THIS MAP COMPLIES WITH NATIONAL MAP ACCURACY STANDARDS  
FOR SALE BY U.S. GEOLOGICAL SURVEY, WASHINGTON, D.C. 20242  
A FOLDER DESCRIBING TOPOGRAPHIC MAPS AND SYMBOLS IS AVAILABLE ON REQUEST

ROCHESTER EAST  
5.7 MI. TO N.Y. 383  
1.3 MI. TO N.Y. 383  
PALMIRA 2.4 MI.

CITY HALL 0.6 MI.  
5.3 MI. TO U.S. 106  
6 MI. TO U.S. 106

IMONDON POND

4150  
AUG 10 1970