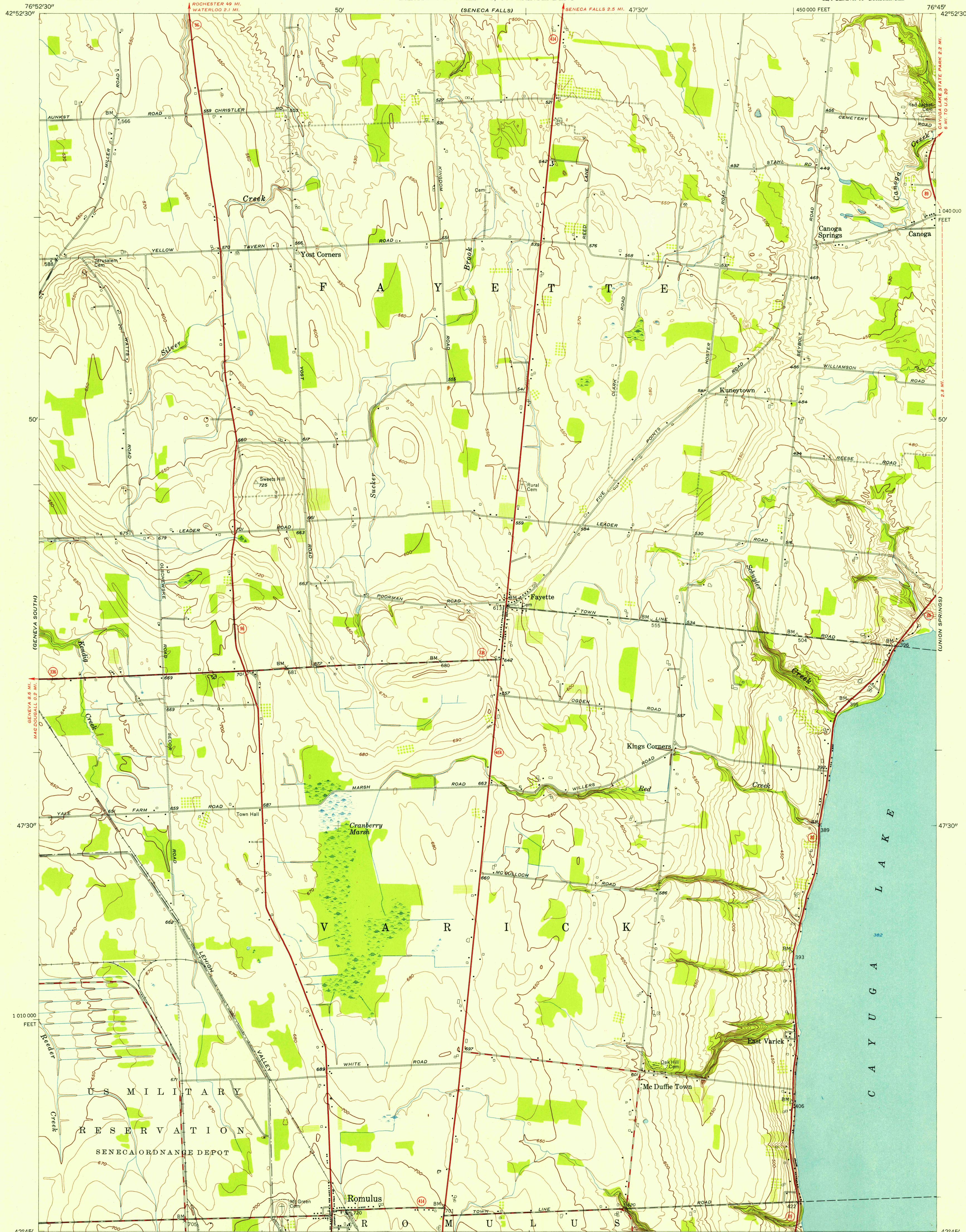


UNITED STATES  
DEPARTMENT OF THE INTERIOR  
GEOLOGICAL SURVEY

STATE OF NEW YORK  
DEPARTMENT OF PUBLIC WORKS  
BERTRAM D. TALLAMY, SUPERINTENDENT

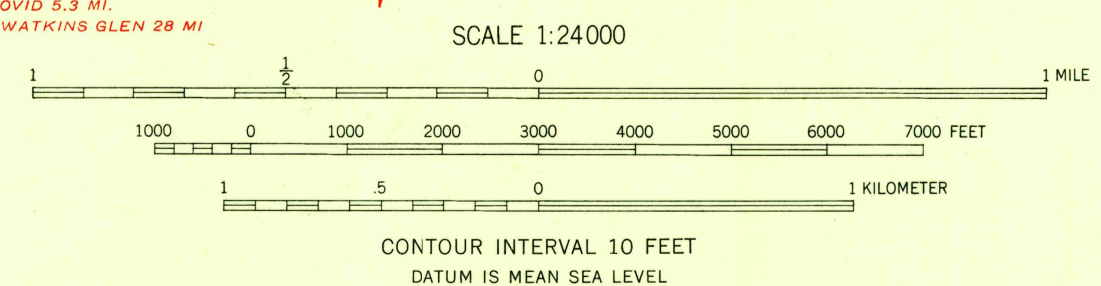
ROMULUS QUADRANGLE  
NEW YORK—SENECA CO.  
7.5 MINUTE SERIES (TOPOGRAPHIC)  
SE/4 GENEVA 15' QUADRANGLE

U.S.G.S.  
FILE COPY  
TOPOGRAPHIC DIVISION



Mapped, edited, and published by the Geological Survey  
Control by USGS, USC&GS, and TVA  
Culture and drainage in part compiled by Corps of Engineers,  
U. S. Army, from aerial photographs taken 1942  
Topography by plane-table surveys 1953  
Polyconic projection. 1927 North American datum  
10,000-foot grid based on New York coordinate system,  
central zone

10°  
TRUE NORTH  
MAGNETIC NORTH  
APPROXIMATE MEAN  
DECLINATION, 1953



ROAD CLASSIFICATION  
Heavy-duty 4 LANE 6 LANE Light-duty  
Medium-duty 4 LANE 6 LANE Unimproved dirt  
U. S. Route State Route

ROMULUS, N. Y.  
SE/4 GENEVA 15' QUADRANGLE  
N 4245—W 7645/7.5

1953

U.S.G.S.  
FILE COPY  
TOPOGRAPHIC DIVISION