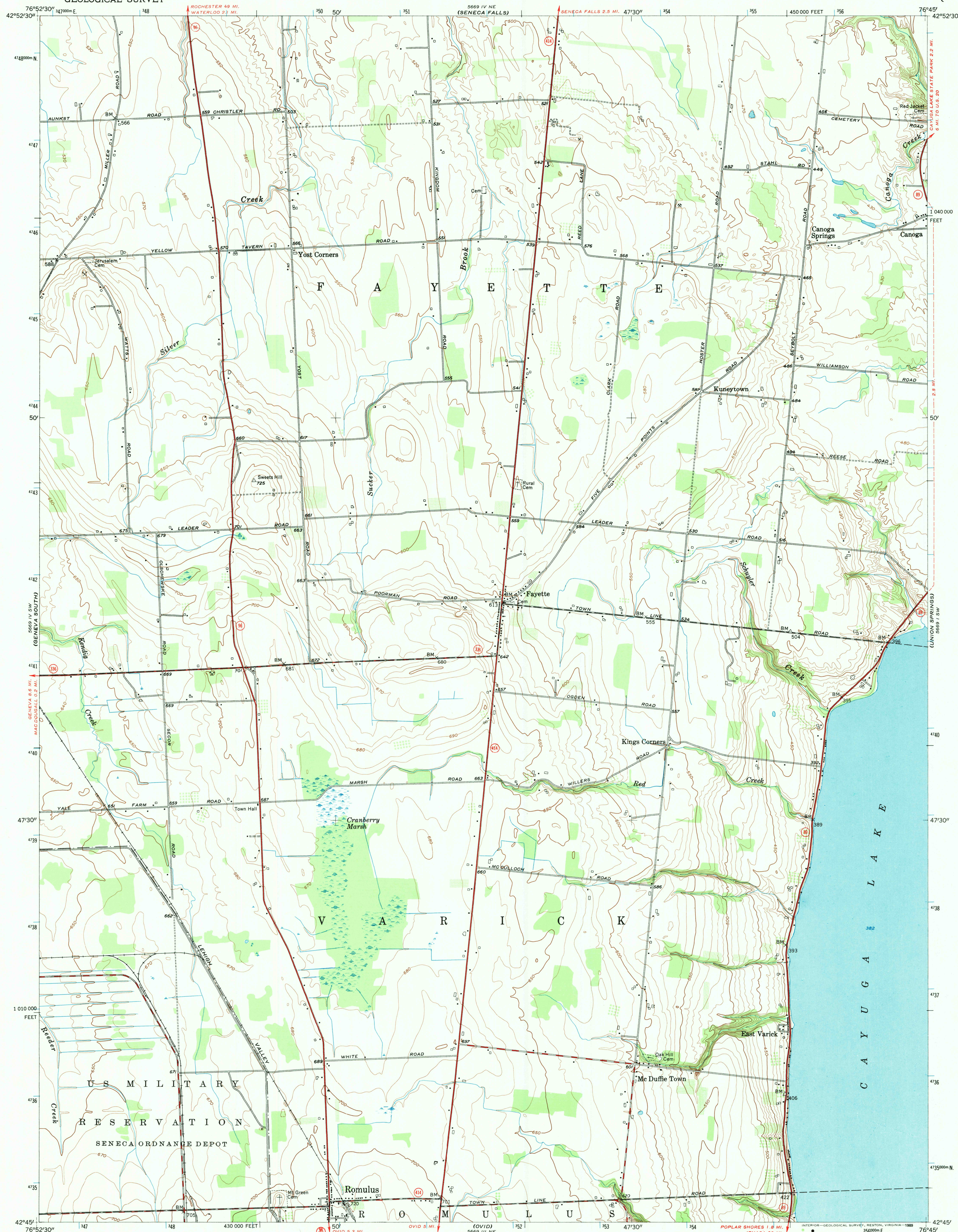


UNITED STATES  
DEPARTMENT OF THE INTERIOR  
GEOLOGICAL SURVEY

STATE OF NEW YORK  
DEPARTMENT OF PUBLIC WORKS

ROMULUS QUADRANGLE  
NEW YORK—SENECA CO.  
7.5 MINUTE SERIES (TOPOGRAPHIC)

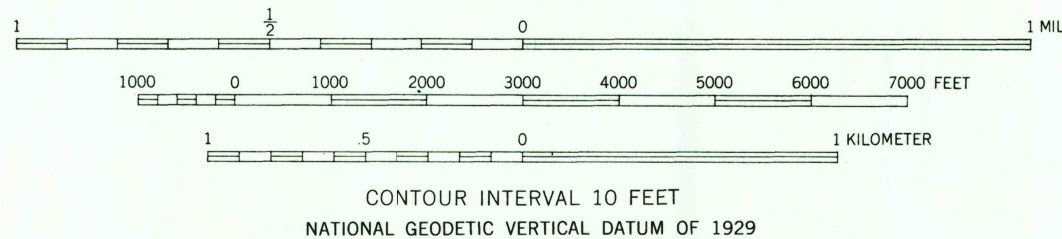
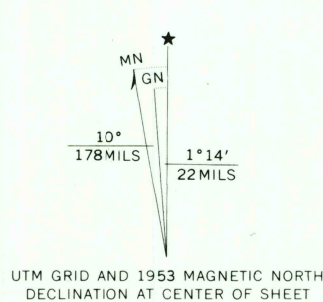


Mapped, edited, and published by the Geological Survey

Control by USGS, USC&GS, and TVA  
Culture and drainage in part compiled by Corps of Engineers  
U. S. Army, from aerial photographs taken 1942  
Topography by plane-table surveys 1953

Polyconic projection. 1927 North American datum  
10,000-foot grid based on New York coordinate system,  
central zone  
1000-meter Universal Transverse Mercator grid ticks,  
zone 18, shown in blue

To place on the predicted North American Datum 1983  
move the projection lines 3 meters south and  
26 meters west as shown by dashed corner ticks



ROAD CLASSIFICATION		
Heavy-duty	4 LANE 16 LANE	Light-duty
Medium-duty	4 LANE 16 LANE	Unimproved dirt
U. S. Route		State Route

ROMULUS, N. Y.

42076-G7-TF-024

1953

DMA 5669 IV SE—SERIES V821

USGS AND HISTORICAL MAP  
MAY 10 1989  
REC'D FILE COPY