

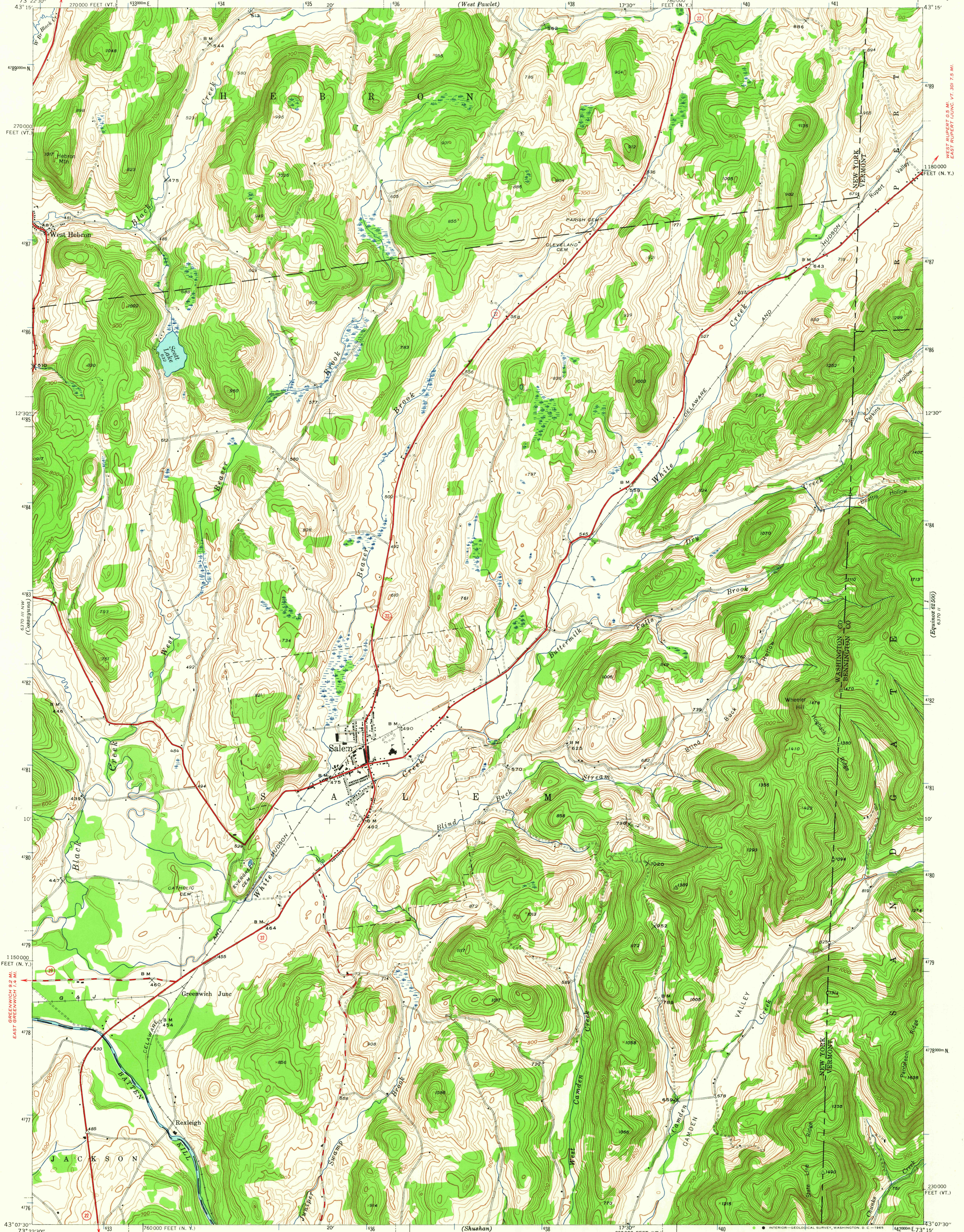
GRANVILLE 13 MI.
NORTH HEBRON 5.2 MI.

UNITED STATES
DEPARTMENT OF THE INTERIOR
GEOLOGICAL SURVEY

UNITED STATES
DEPARTMENT OF THE ARMY
CORPS OF ENGINEERS

NEW YORK-VERMONT
SALEM QUADRANGLE
7 1/2-MINUTE SERIES

6370 I
6370 I
6370 I



Mapped by the Geological Survey
1944 CAMBRIDGE 7.2 MI.
HOOSICK FALLS 18 MI.

ROAD CLASSIFICATION
Heavy-duty ——— Light-duty ———
Medium-duty ——— Unimproved dirt ———
○ State Route

UTM GRID AND 1944 MAGNETIC NORTH
DECLINATION AT CENTER OF SHEET

SCALE 1:24,000
CONTOUR INTERVAL 20 FEET
DATUM IS MEAN SEA LEVEL

FOR SALE BY U. S. GEOLOGICAL SURVEY, WASHINGTON, D. C. 20242
A FOLDER DESCRIBING TOPOGRAPHIC MAPS AND SYMBOLS IS AVAILABLE ON REQUEST

USGS
Historical File
Topographic Division

U.S.G.S.
FILE COPY
TOPOGRAPHIC DIVISION

Polyconic projection. 1927 North American datum
10,000-foot grids based on New York (East)
and Vermont rectangular coordinate systems
1000-meter Universal Transverse Mercator grid ticks,
zone 18, shown in blue

SALEM, N. Y.-VT.
N4307 5-W7315/7.5
1944
AMS 6370 III NE-SERIES V821

AUG 13 1965

3550